

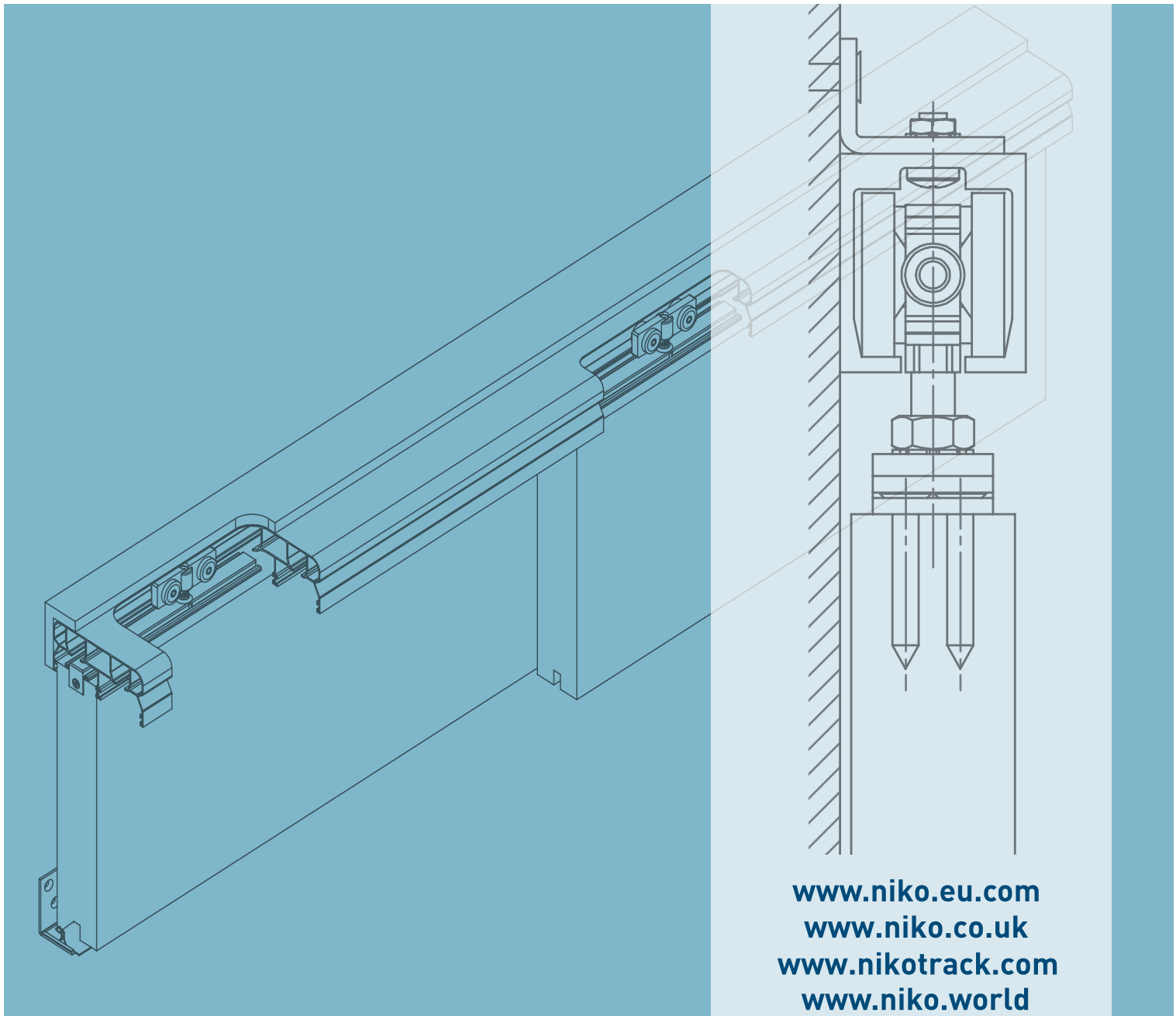
Light duty

Sliding door fittings

Product Catalogue



*NIKO ...Quality in Motion*



[www.niko.eu.com](http://www.niko.eu.com)  
[www.niko.co.uk](http://www.niko.co.uk)  
[www.nikotrack.com](http://www.nikotrack.com)  
[www.niko.world](http://www.niko.world)



# Global LOCATIONS & HEAD OFFICE

Light duty  
sliding door fittings

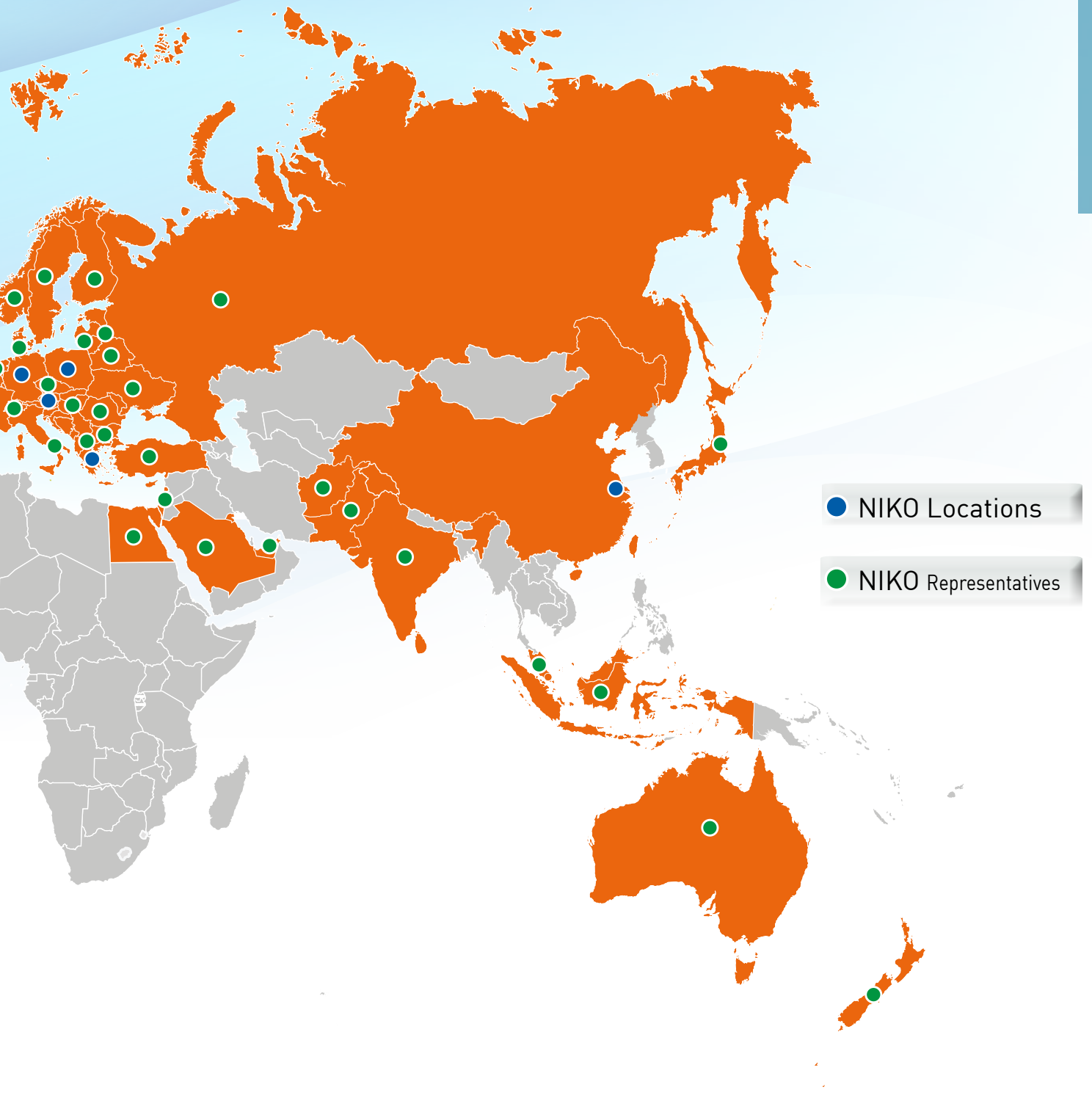


Light duty sliding door fittings  
We reserve the right for technical amendments without obligation.  
The product pictures and drawings depicted in this catalogue  
do not always reflect all available sizes.

Ver. November 2018

[www.niko.eu.com](http://www.niko.eu.com)

Established in 1972, is focused on designing developing, producing and marketing high quality sliding door fittings, light cranes and overhead conveyor systems at the right price. Over 90% of our products are exported to more than 60 countries worldwide with offices and warehouses in 7 countries worldwide.



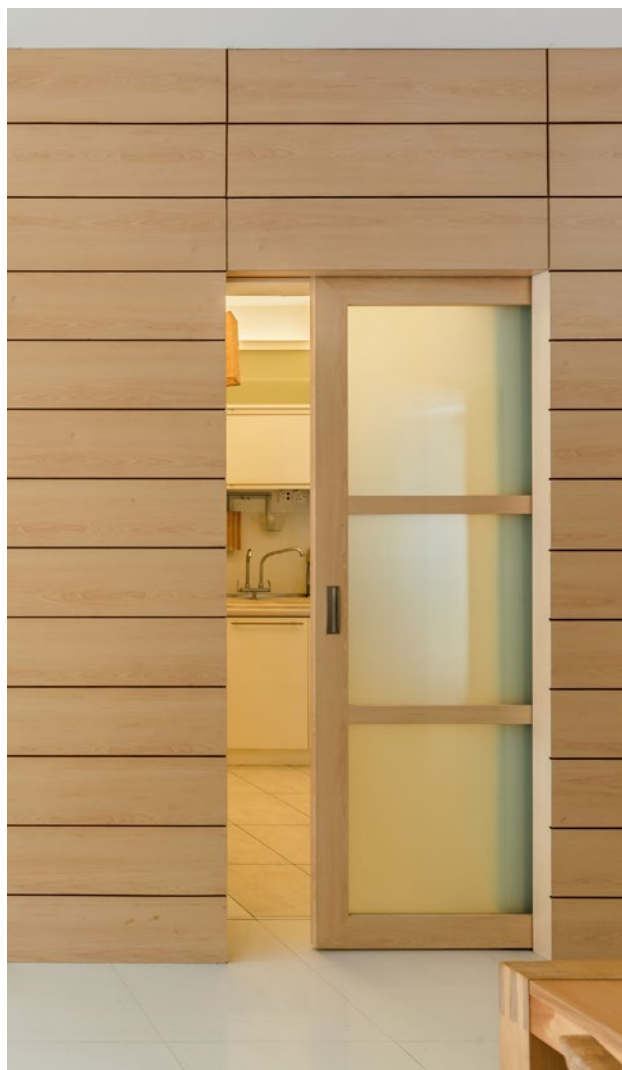
**Light duty sliding door fittings**

We reserve the right for technical amendments without obligation.  
The product pictures and drawings depicted in this catalogue do not always reflect all available sizes.



# Application Photos

Light duty  
sliding door fittings



**Light duty sliding door fittings**  
We reserve the right for technical amendments without obligation.  
The product pictures and drawings depicted in this catalogue  
do not always reflect all available sizes.

Ver. November 2018

[www.niko.eu.com](http://www.niko.eu.com)

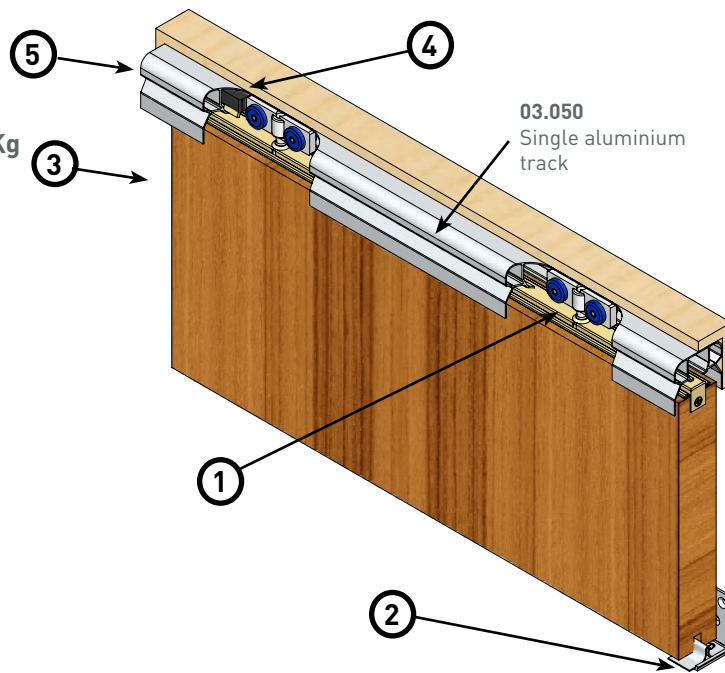
# Contents

|  |      |       |
|--|------|-------|
| Sliding door kit applications              | Page | 6-11  |
| Steel track profiles & bends               | Page | 12    |
| Aluminium track profiles                   | Page | 13-14 |
| Support brackets & joints                  | Page | 15-17 |
| Wheel hangers & brackets for wheel hangers | Page | 18-25 |
| Guide pieces                               | Page | 26    |
| End stops                                  | Page | 27    |
| Notes                                      | Page | 28-30 |

## Application examples - Sliding door assemblies

### SLIDING DOOR KIT NIKO SERIES 03. (with aluminium track)

KIT for panel weight up to 60 Kg



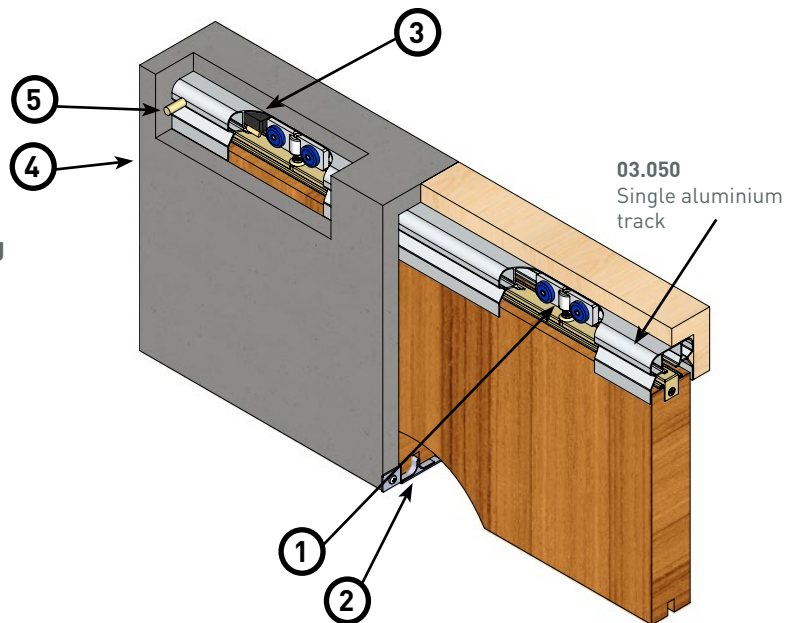
The components set 03.900 includes :

| No. | Quantity (pcs) | Description   |        | Page |
|-----|----------------|---|--------|------|
| 1   | 2              | Wheel hanger with nylon body and complete plate bracket | 03.R45 | 24   |
| 2   | 1              | Guide piece for outside-wall panel                      | 38.U40 | 26   |
| 3   | 1              | Panel end stop  | 03.X02 | 27   |
| 4   | 2              | Track end stop  | 03.X01 | 27   |
| 5   | 1              | Plastic track cap                                       | 03.X05 | 17   |

All components set are provided with 1 screw set.

### SLIDING DOOR KIT NIKO SERIES 03. FOR POCKET DOOR (SLIDING INSIDE WALL) WITH A LONG PLATE - BRACKET (with aluminium track)

KIT for panel weight up to 60 Kg



The components set 03.910 includes :

| No. | Quantity (pcs) | Description                                     |        | Page |
|-----|----------------|---|--------|------|
| 1   | 2              | Wheel hanger with nylon body for sliding door   | 03.R46 | 24   |
| 2   | 1              | Guide piece for pocket door (inside wall) panel | 38.U45 | 26   |
| 3   | 2              | Track end stop                                  | 03.X01 | 27   |
| 4   | 1              | Panel end stop                                  | 03.X02 | 27   |
| 5   | 1              | Track nail                                      | 03.X06 | 25   |

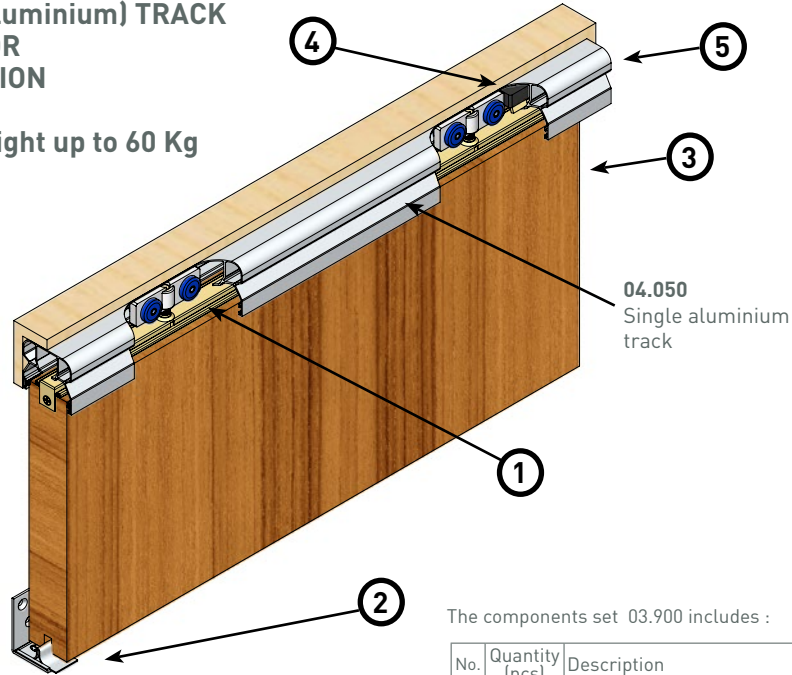
All components set are provided with 1 screw set.

#### Light duty sliding door fittings

We reserve the right for technical amendments without obligation.  
The product pictures and drawings depicted in this catalogue  
do not always reflect all available sizes.

**SLIDING DOOR KIT  
NIKO SERIES 04.  
WITH SINGLE (Aluminium) TRACK  
WITH OPTION FOR  
BRUSH INSULATION**

**KIT for panel weight up to 60 Kg**



The components set 03.900 includes :

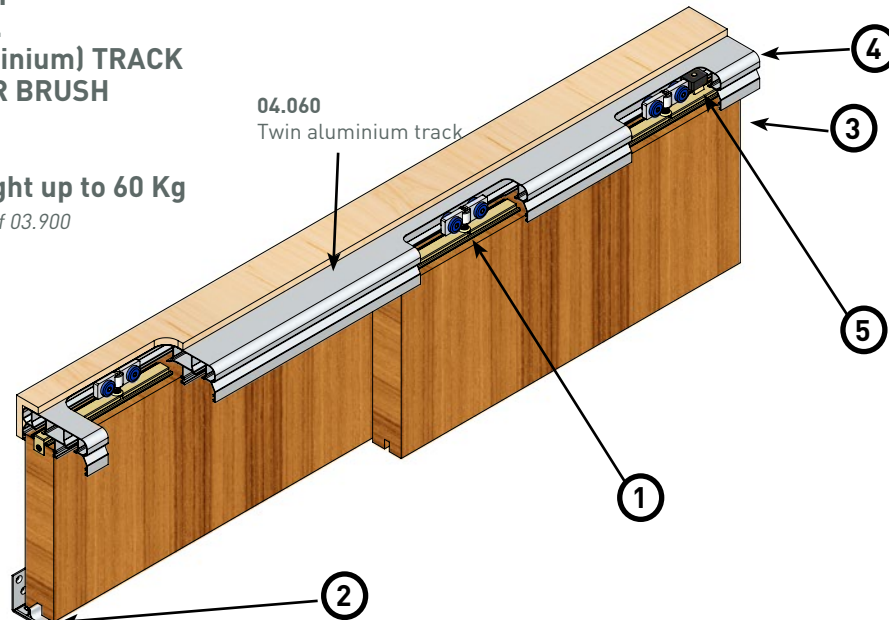
| No. | Quantity (pcs) | Description   |        | Page |
|-----|----------------|---|--------|------|
| 1   | 2              | Wheel hanger with nylon body and complete plate bracket | 03.R45 | 24   |
| 2   | 1              | Guide piece for outside-wall panel                      | 38.U40 | 26   |
| 3   | 1              | Panel end stop  | 03.X02 | 27   |
| 4   | 2              | Track end stop  | 03.X01 | 27   |
| 5   | 1              | Plastic track cap                                       | 03.X05 | 17   |

All components set are provided with 1 screw set.

**SLIDING DOOR KIT  
NIKOS SERIES 04.  
WITH TWIN (aluminium) TRACK  
WITH OPTION FOR BRUSH  
INSULATION**

**KIT for panel weight up to 60 Kg**

*This kit requires 2 sets of 03.900*



The components set 03.900 includes :

| No. | Quantity (pcs) | Description   |        | Page |
|-----|----------------|---|--------|------|
| 1   | 2              | Wheel hanger with nylon body and complete plate bracket | 03.R45 | 24   |
| 2   | 1              | Guide piece for outside-wall panel                      | 38.U40 | 26   |
| 3   | 1              | Panel end stop  | 03.X02 | 27   |
| 4   | 1              | Plastic track cap                                       | 03.X05 | 17   |
| 5   | 2              | Track end stop  | 03.X01 | 27   |

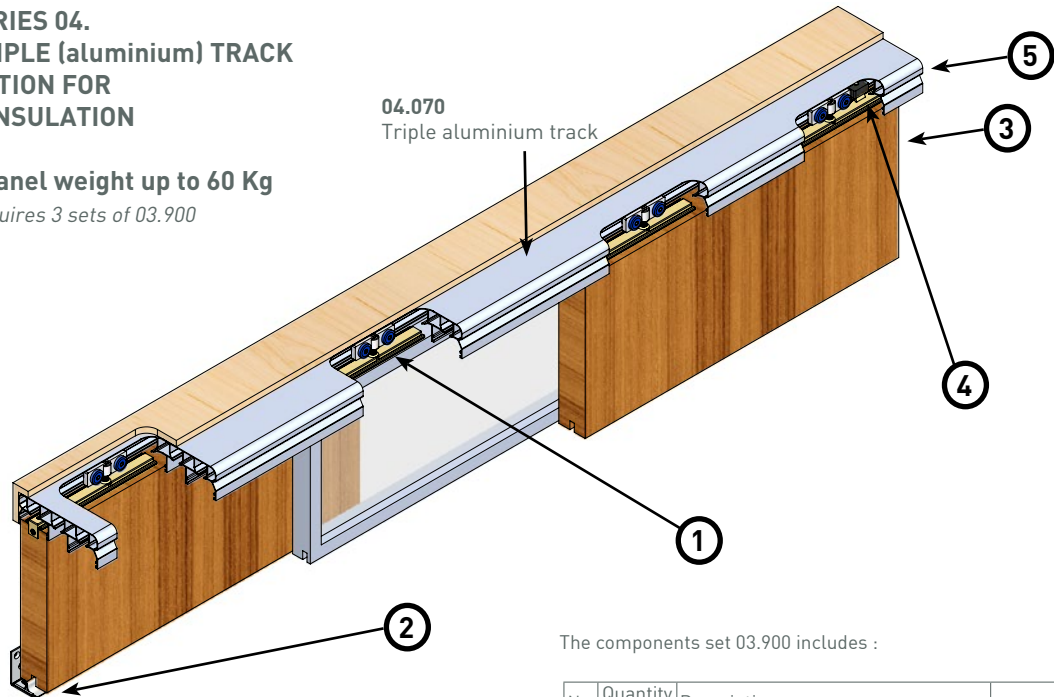
All components set are provided with 1 screw set.

## Application examples - Sliding door assemblies

### SLIDING DOOR KIT NIKO SERIES 04. WITH TRIPLE (aluminium) TRACK WITH OPTION FOR BRUSH INSULATION

**KIT for panel weight up to 60 Kg**

*This kit requires 3 sets of 03.900*

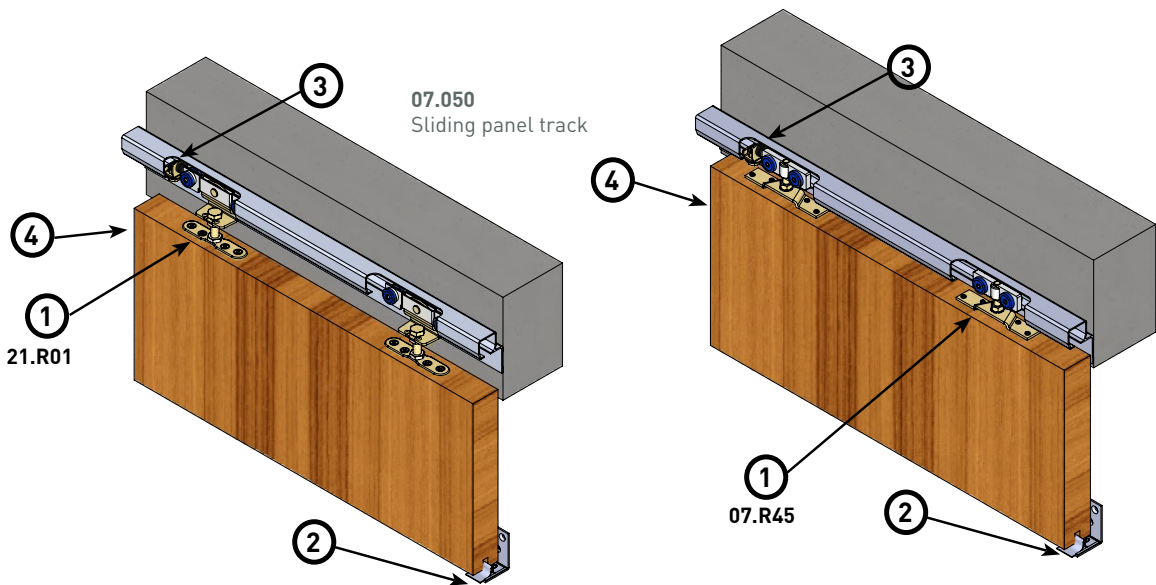


The components set 03.900 includes :

| No. | Quantity (pcs) | Description   |        | Page |
|-----|----------------|---|--------|------|
| 1   | 2              | Wheel hanger with nylon body and complete plate bracket | 03.R45 | 24   |
| 2   | 1              | Guide piece for outside-wall panel                      | 38.U40 | 26   |
| 3   | 1              | Panel end stop  | 03.X02 | 27   |
| 4   | 2              | Track end stop  | 03.X01 | 27   |
| 5   | 1              | Plastic track cap                                       | 03.X05 | 17   |

*All components set are provided with 1 screw set.*

### SLIDING DOOR KIT NIKO SERIES 07. (with aluminium track) KIT for panel weight up to 75 Kg



The components set 07.900/910 includes :

| No. | Quantity (pcs) | Description  |        | Page |
|-----|----------------|--|--------|------|
| 1   | 2              | Wheel hanger for sliding door with bracket [07.900]          | 21.R01 | 22   |
| 1   | 2              | Wheel hanger with nylon body and suspension bracket [07.910] | 07.R45 | 24   |
| 2   | 1              | Guide piece for outside-wall panel                           | 38.U40 | 26   |
| 3   | 2              | Track end stop   | 21.X04 | 27   |
| 4   | 1              | Panel end stop   | 03.X02 | 27   |

*All components set are provided with 1 screw set.*

#### Light duty sliding door fittings

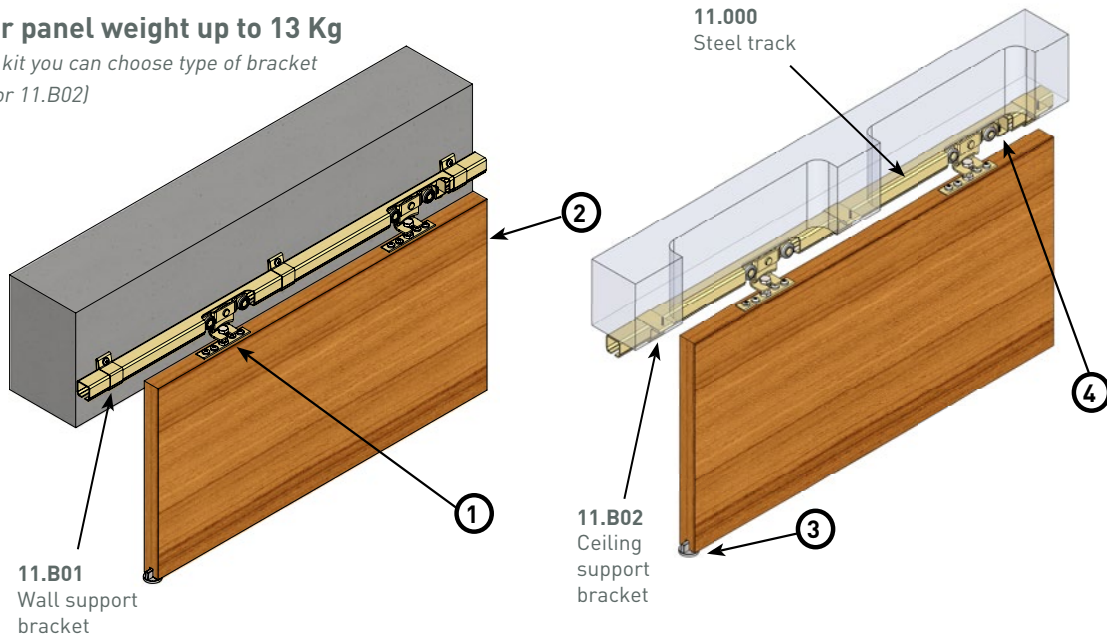
We reserve the right for technical amendments without obligation.  
The product pictures and drawings depicted in this catalogue do not always reflect all available sizes.



### SLIDING DOOR KIT NIKO SERIES 11. (with steel track & double bracket)

#### KIT for panel weight up to 13 Kg

For this kit you can choose type of bracket  
11.B01 or 11.B02



The components set 11.901 includes :

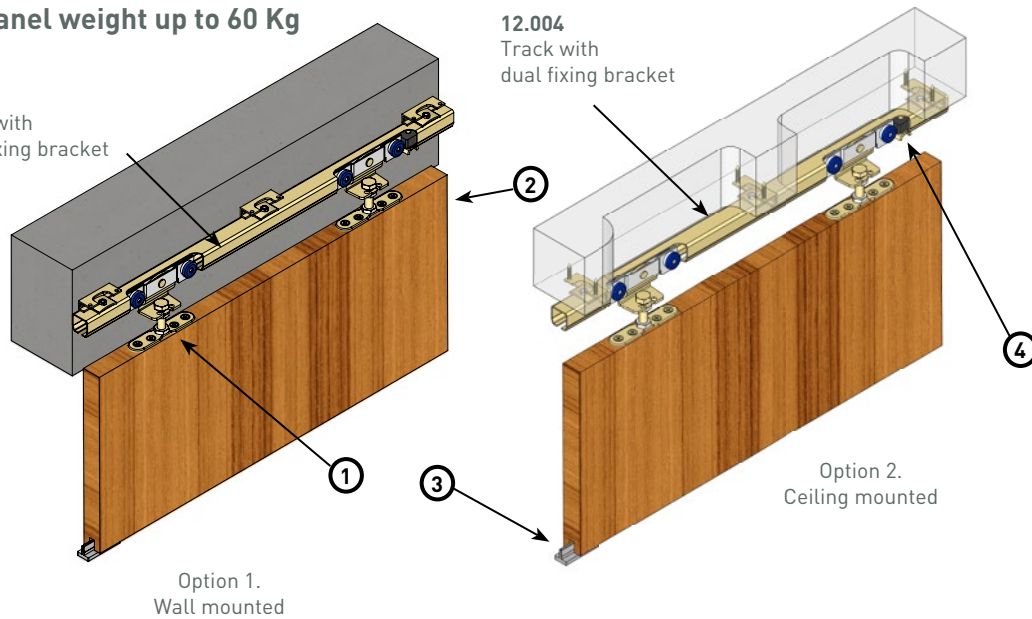
| No. | Quantity (pcs) | Description                                       |        | Page |
|-----|----------------|---|--------|------|
| 1   | 2              | Wheel hanger with screw fixing bracket (4 wheels) | 11.R01 | 22   |
| 2   | 1              | Panel end stop                                    | 03.X02 | 27   |
| 3   | 1              | Guide nylon piece                                 | 38.U04 | 26   |
| 4   | 2              | Track end stop                                    | 11.X01 | 27   |

All components set are provided with 1 screw set.

### SLIDING DOOR KIT NIKO SERIES 12. (with steel track & dual fixing bracket)

#### KIT for panel weight up to 60 Kg

12.004  
Track with  
dual fixing bracket



The components set 12.900 includes :

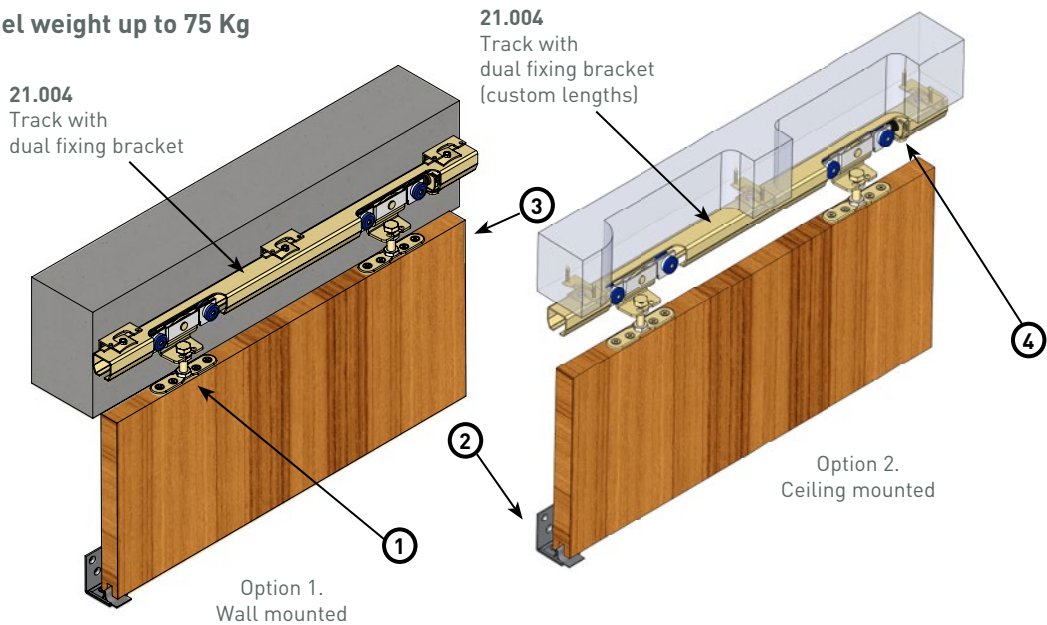
| No. | Quantity (pcs) | Description                                |        | Page |
|-----|----------------|--|--------|------|
| 1   | 2              | Wheel hanger for sliding door with bracket | 12.R01 | 22   |
| 2   | 1              | Panel end stop                             | 03.X02 | 27   |
| 3   | 1              | Guide nylon piece                          | 38.U14 | 26   |
| 4   | 2              | Track end stop                             | 12.X01 | 27   |

All components set are provided with 1 screw set.

## Application examples - Sliding door assemblies

### SLIDING DOOR KIT NIKO SERIES 21. (with steel track & dual fixing bracket)

**KIT for panel weight up to 75 Kg**



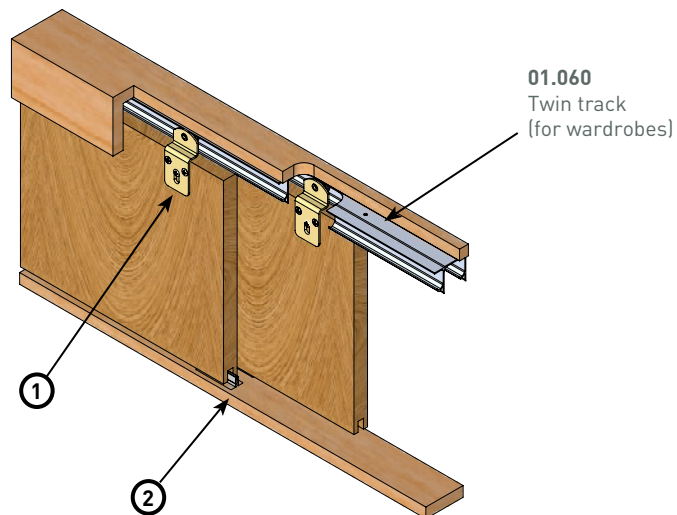
The components set 21.900 includes :

| No. | Quantity (pcs) | Description                                |        | Page |
|-----|----------------|--|--------|------|
| 1   | 2              | Wheel hanger for sliding door with bracket | 21.R01 | 22   |
| 2   | 1              | Guide piece for outside-wall panel         | 38.U40 | 26   |
| 3   | 1              | Panel end stop                             | 03.X02 | 27   |
| 4   | 2              | Track end stop                             | 21.X04 | 27   |

All components set are provided with 1 screw set.

### KIT FOR SLIDING DOOR PANELS FOR WARDROBES, SHOP WINDOWS ETC. NIKO SERIES 01. (with twin aluminium track)

**KIT for panel weight up to 20 kg**



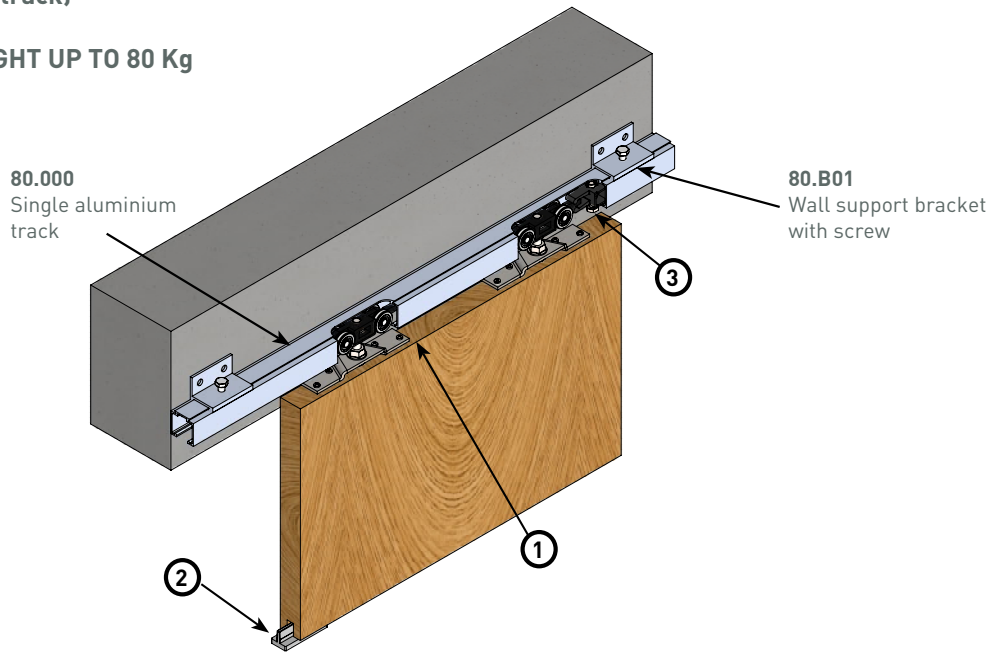
The components set 01.900 includes :

| No. | Quantity (pcs) | Description                     |        | Page |
|-----|----------------|---------------------------------|--------|------|
| 1   | 4              | Wardrobe wheel hanger (1 wheel) | 01.R25 | 21   |
| 2   | 2              | Guide nylon piece               | 38.U15 | 26   |

All components set are provided with 1 screw set.

**SLIDING DOOR KIT - NIKO SERIES 80. (LLK)**  
(with aluminium track)

FOR PANEL WEIGHT UP TO 80 Kg



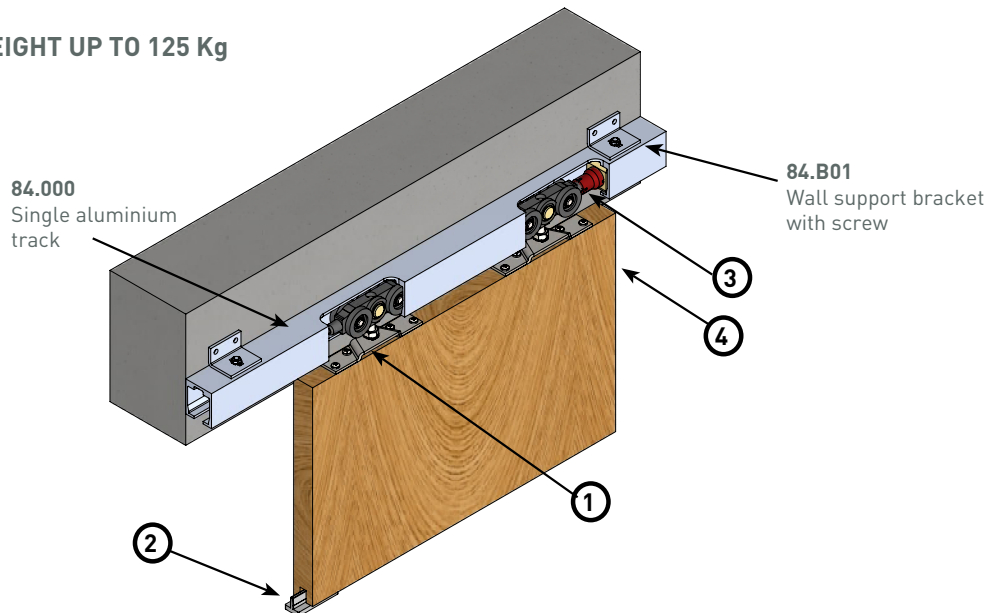
The components set 80.100 includes :

| No. | Quantity (pcs) | Description               |        | Page |
|-----|----------------|---------------------------|--------|------|
| 1   | 2              | Wheel hanger with bracket | 80.R01 | 25   |
| 2   | 1              | Guide nylon piece         | 38.U14 | 26   |
| 3   | 2              | Capturing end stop        | 80.X01 | 27   |

All components set are provided with 1 screw set.

**SLIDING DOOR KIT - NIKO SERIES 84. (LLK)**  
(with aluminium track)

FOR PANEL WEIGHT UP TO 125 Kg



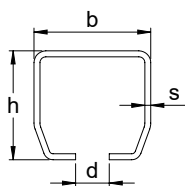
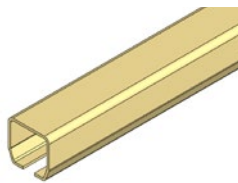
The components set 84.100 includes :

| No. | Quantity (pcs) | Description        |        | Page |
|-----|----------------|--------------------|--------|------|
| 1   | 2              | Wheel hanger       | 84.R00 | 25   |
| 1   | 2              | Bracket            | 84.030 | 25   |
| 2   | 1              | Guide nylon piece  | 38.U14 | 26   |
| 3   | 2              | Capturing end stop | 84.X01 | 27   |
| 4   | 1              | Panel end stop     | 03.X02 | 27   |

All components set are provided with 1 screw set.

## Steel track zinc plated

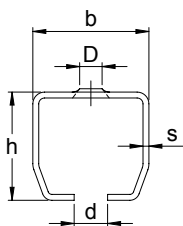
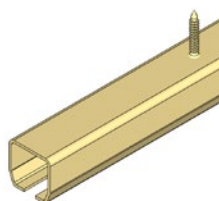
Type .000



| NIKO Profile No. | Dimensions |        |        |        |
|------------------|------------|--------|--------|--------|
|                  | h (mm)     | b (mm) | d (mm) | s (mm) |
| 11.000           | 19         | 19     | 5      | 1.2    |
| 12.000           | 24         | 25     | 7      | 1.5    |
| 21.000           | 28         | 30     | 8      | 1.75   |

## Drilled track zinc plated

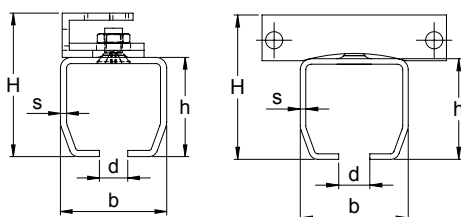
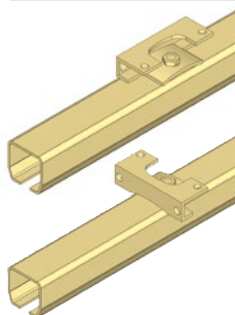
Type .002



| NIKO Profile No. | Dimensions |        |        |        |        |
|------------------|------------|--------|--------|--------|--------|
|                  | h (mm)     | b (mm) | d (mm) | D (mm) | s (mm) |
| 11.000           | 19         | 19     | 5      | -      | 1.2    |
| 12.000           | 24         | 25     | 7      | 4.8    | 1.5    |
| 21.000           | 28         | 30     | 8      | 4.8    | 1.75   |

## Track zinc plated with dual fixing bracket

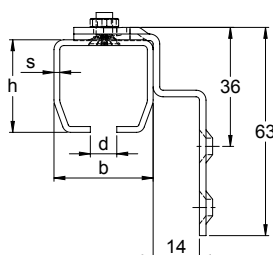
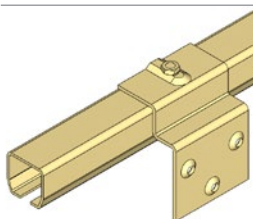
Type .004



| NIKO Profile No. | 12.000      | 21.000      |
|------------------|-------------|-------------|
| Part No.         | 12.004/.005 | 21.004/.005 |
| Dimension H (mm) | 36.5        | 40.5        |
| Dimension h (mm) | 24          | 28          |
| Dimension b (mm) | 25          | 30          |
| Dimension d (mm) | 7           | 8           |
| Dimension s (mm) | 1.5         | 1.75        |

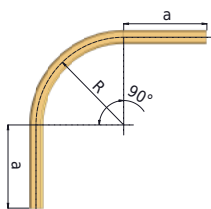
## Track zinc plated with wall support

Type .006



| NIKO Profile No. | 12.000      | 21.000      |
|------------------|-------------|-------------|
| Part No.         | 12.006/.007 | 21.006/.007 |
| Dimension h (mm) | 24          | 28          |
| Dimension b (mm) | 25          | 30          |
| Dimension d (mm) | 7           | 8           |
| Dimension s (mm) | 1.5         | 1.75        |

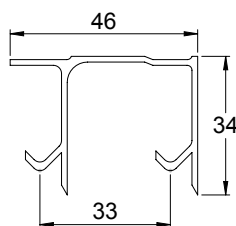
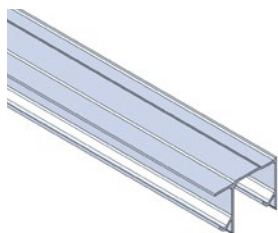
## Track bend 90°



| NIKO Profile No.     | 11.000   |        | 12.000 |        |        | 21.000 |        |        |
|----------------------|----------|--------|--------|--------|--------|--------|--------|--------|
|                      | Part No. | 11.C02 | 11.C05 | 12.C02 | 12.C04 | 12.C06 | 21.C02 | 21.C04 |
| Standard radius (mm) | -        | 485±10 | -      | -      | 650±10 | -      | -      | 650±10 |
| Small radius (mm)    | 250±10   | -      | 205±10 | 400±10 | -      | 205±10 | 400±10 | -      |
| a (mm)               | 553±20   | 620±20 | 590±20 | 686±20 | 490±20 | 590±20 | 686±20 | 490±20 |

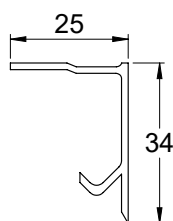
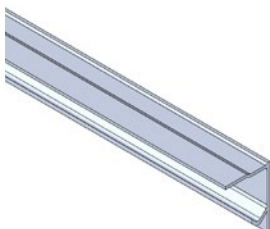
**Twin track (for wardrobes)**

**Type 01.060**



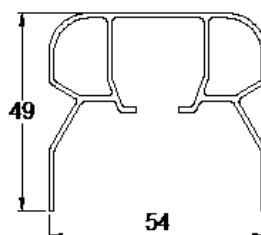
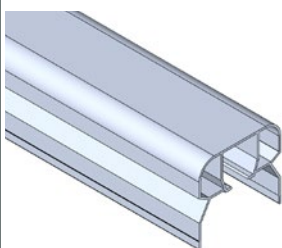
**Single track (for wardrobes)**

**Type 01.050**



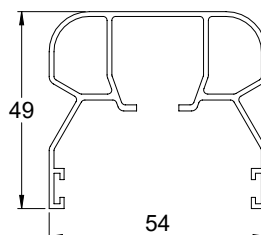
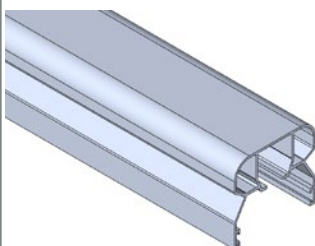
**Single track**

**Type 03.050**



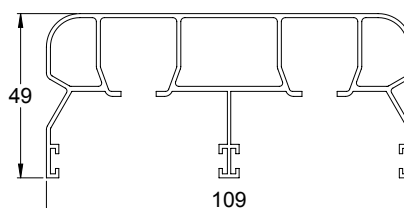
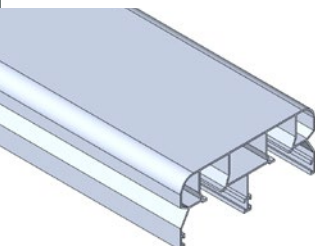
**Single track with slot for brush insulator**

**Type 04.050**



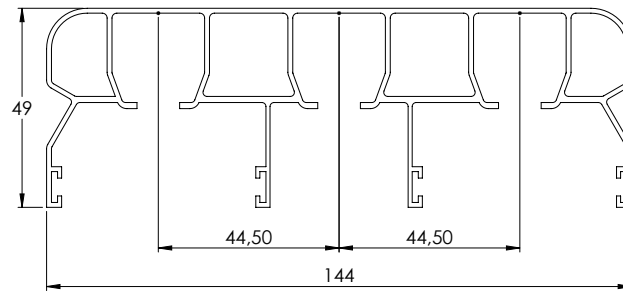
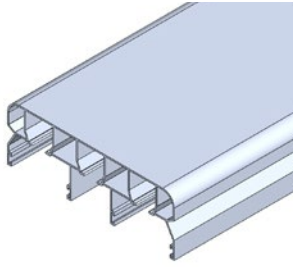
**Twin track with slot for brush insulator**

**Type 04.060**



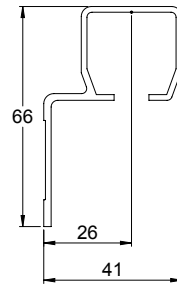
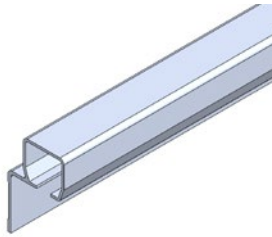
**Triple track with slot for brush insulator**

**Type 04.070**



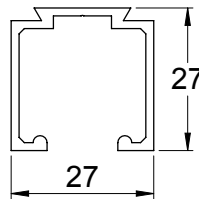
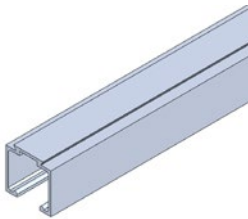
**Sliding panel track**

**Type 07.050**



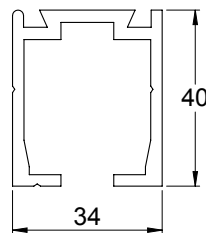
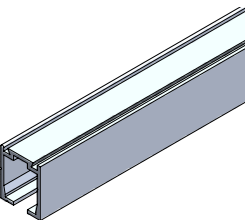
**Single aluminium track**

**Type 80.000**



**Single aluminium track**

**Type 84.000**



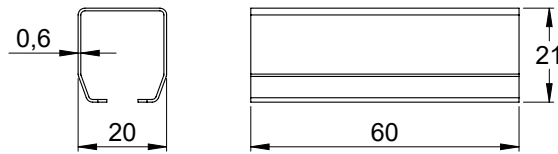
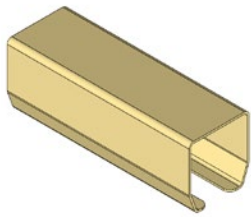
**Brush insulator**

**Type 04.X10**



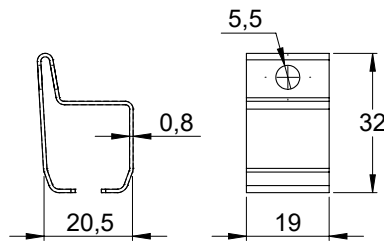
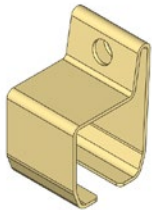
### Splice joint (clip)

Type 11.B49



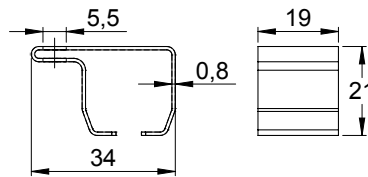
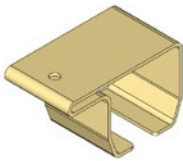
### Wall support bracket (clip)

Type 11.B01



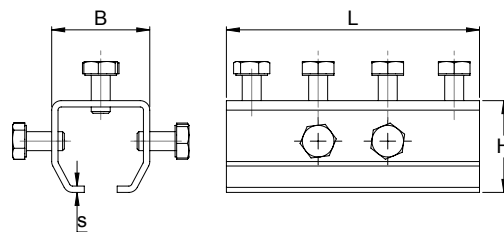
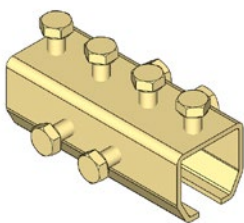
### Ceiling support bracket (clip)

Type 11.B02



### Splice joint

Type 12./21.B49



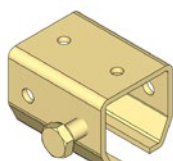
|                  |        |        |
|------------------|--------|--------|
| NIKO Profile No. | 12.000 | 21.000 |
| Part No.         | 12.B49 | 21.B49 |
| B (mm)           | 31     | 38     |
| L (mm)           | 80     | 85     |
| s (mm)           | 2      | 3      |
| H (mm)           | 29     | 36     |

### Support bracket zinc plated/ plain (un-plated)

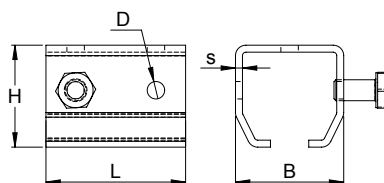
Type 12./21.B00/.B50



.B50, plain



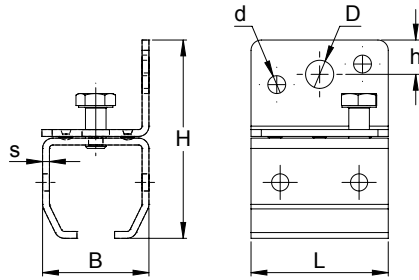
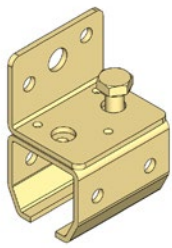
.B00



|                  |             |             |
|------------------|-------------|-------------|
| NIKO Profile No. | 12.000      | 21.000      |
| Part No.         | 12.B00/.B50 | 21.B00/.B50 |
| B (mm)           | 31          | 38          |
| L (mm)           | 40          | 40          |
| D (mm)           | 5           | 5           |
| s (mm)           | 2           | 3           |
| H (mm)           | 29          | 36          |

## Wall support bracket

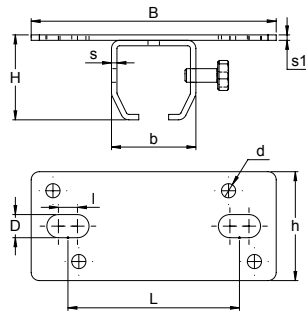
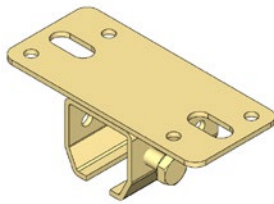
### Type 12./21.B01



|                  |        |        |
|------------------|--------|--------|
| NIKO Profile No. | 12.000 | 21.000 |
| Part No.         | 12.B01 | 21.B01 |
| B (mm)           | 31     | 38     |
| D (mm)           | 8      | 8      |
| d (mm)           | 5.2    | 5.2    |
| L (mm)           | 40     | 40     |
| s (mm)           | 2      | 3      |
| h (mm)           | 10     | 10     |
| H (mm)           | 57     | 60     |

## Ceiling support bracket

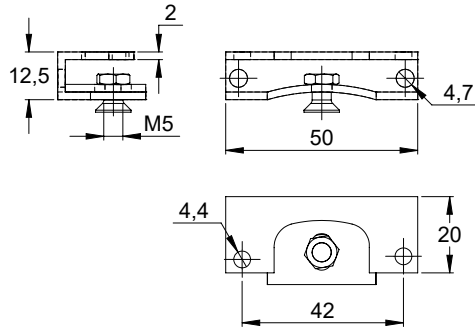
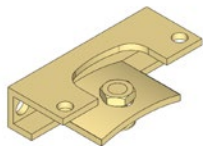
### Type 12./21.B02



|                  |        |        |
|------------------|--------|--------|
| NIKO Profile No. | 12.000 | 21.000 |
| Part No.         | 12.B02 | 21.B02 |
| B (mm)           | 90     | 90     |
| H (mm)           | 31     | 39     |
| s (mm)           | 2      | 3      |
| s1 (mm)          | 2      | 3      |
| b (mm)           | 31     | 38     |
| D (mm)           | 8      | 8      |
| l (mm)           | 7      | 7      |
| L (mm)           | 64     | 64     |
| d (mm)           | 5      | 5.2    |
| h (mm)           | 40     | 40     |

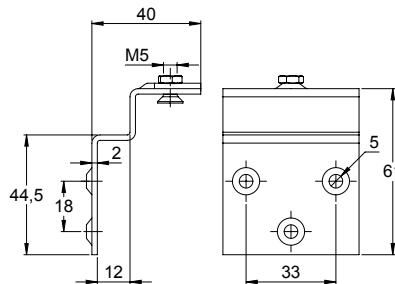
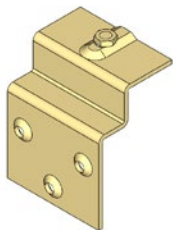
## Ceiling-wall bracket for drilled track

### Type 12.B41



## Wall bracket for drilled track

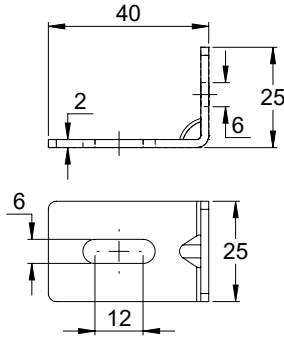
### Type 12.B42





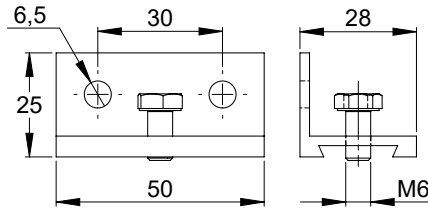
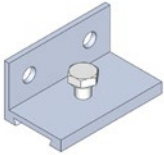
### Wall bracket for drilled track

Type 03.B44



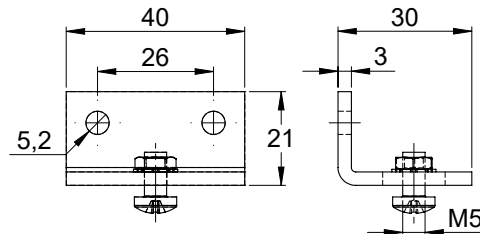
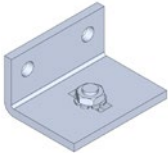
### Wall bracket

Type 80.B01



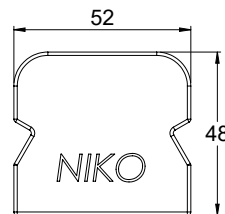
### Wall bracket

Type 84.B01



### Plastic track cap

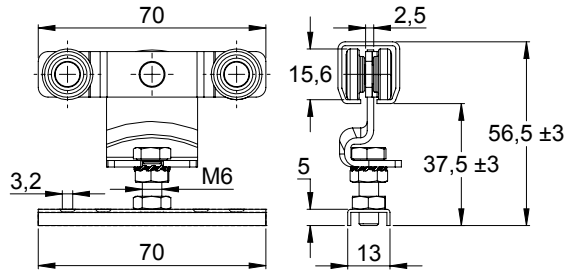
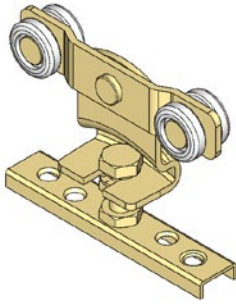
Type 03.X05



### Wheel hanger with screw fixing bracket (4 wheels)

Type 11.R01

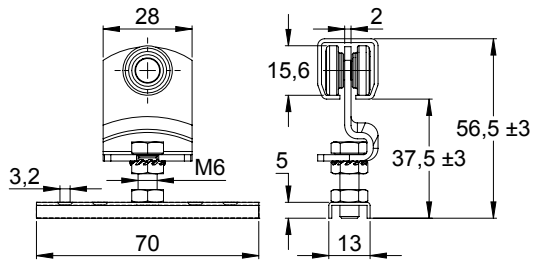
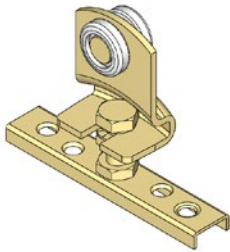
Panel weight up to 13Kg per set of wheel hangers.



### Wheel hanger with screw fixing bracket (2 wheels)

Type 11.R10

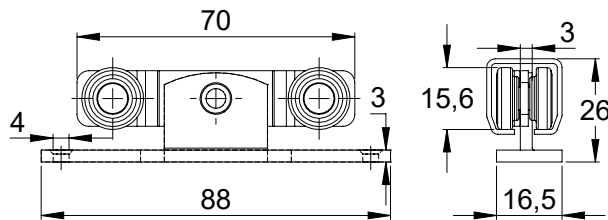
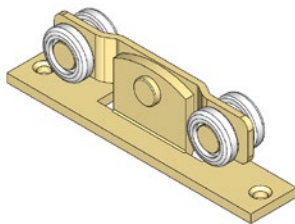
Panel weight up to 9Kg per set of wheel hangers.



### Wheel hanger with fixed bracket (4 wheels)

Type 11.R05

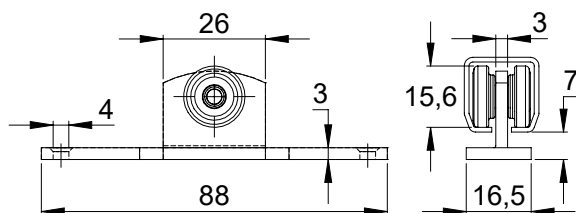
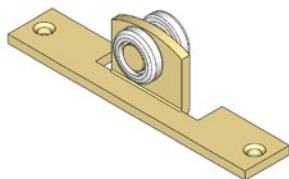
Panel weight up to 13Kg per set of wheel hangers.



### Wheel hanger with fixed bracket (2 wheels)

Type 11.R15

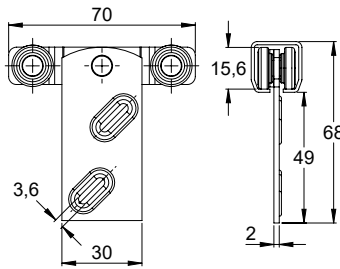
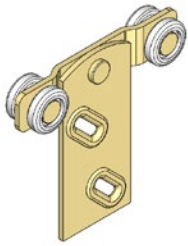
Panel weight up to 9Kg per set of wheel hangers.



## Wheel hanger with straight bracket (4 wheels)

Type 11.R03

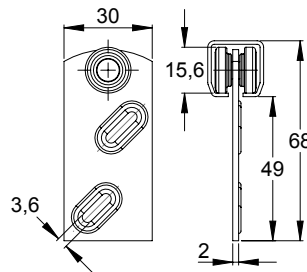
Panel weight up to 13Kg per set of wheel hangers.



## Wheel hanger with straight bracket (2 wheels)

Type 11.R13

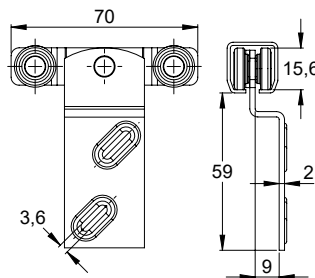
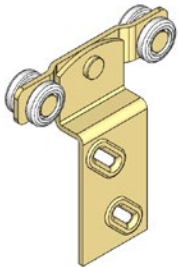
Panel weight up to 9Kg per set of wheel hangers.



## Wheel hanger with corner bracket (4 wheels)

Type 11.R04

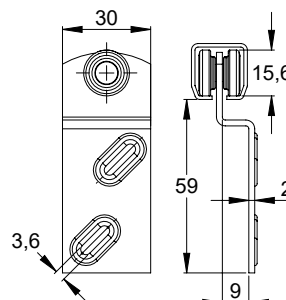
Panel weight up to 13Kg per set of wheel hangers.



## Wheel hanger with corner bracket (2 wheels)

Type 11.R14

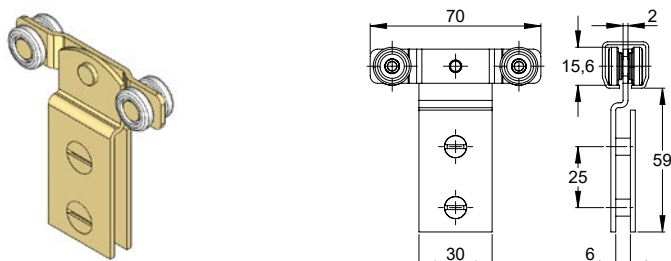
Panel weight up to 9Kg per set of wheel hangers.



## Wheel hanger for sliding glass

Type 11.R40

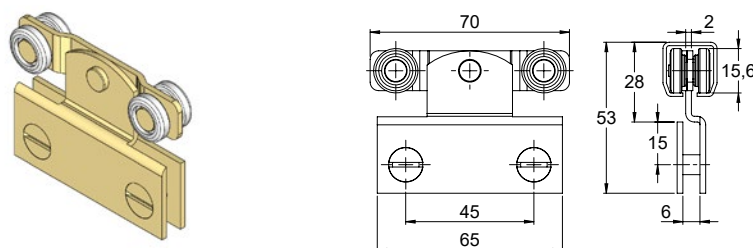
Panel weight up to 13Kg per set of wheel hangers.



## Wheel hanger for sliding glass

Type 11.R41

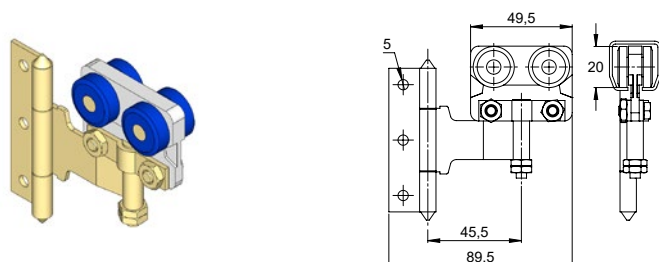
Panel weight up to 13Kg per set of wheel hangers.



## Wheel hanger for folding wardrobe panels

Type 12.R43

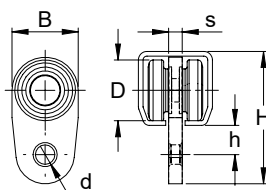
Panel weight up to 20Kg.



## Wheel hanger for curtains

Type 11./12.R31

12.R31 body with enclosed ball bearing.

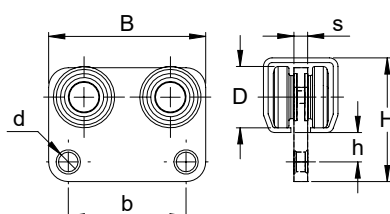


| NIKO Profile No.           | 11.000 | 12.000 |
|----------------------------|--------|--------|
| Part No.                   | 11.R31 | 12.R31 |
| Load per wheel hanger (Kg) | 2.5    | 5      |
| Dimension B (mm)           | 17     | 22.5   |
| Dimension D (mm)           | 15.6   | 20     |
| Dimension d (mm)           | 5      | 5      |
| Dimension s (mm)           | 3.5    | 6.5    |
| Dimension h (mm)           | 7.5    | 18.5   |
| Dimension H (mm)           | 34     | 47     |

## Leading wheel hanger for curtains

Type 11./12.R32

12.R32 body with enclosed ball bearings.



| NIKO Profile No.           | 11.000 | 12.000 |
|----------------------------|--------|--------|
| Part No.                   | 11.R32 | 12.R32 |
| Load per wheel hanger (Kg) | 2.5    | 5      |
| Dimension B (mm)           | 40     | 52     |
| Dimension D (mm)           | 15.6   | 20     |
| Dimension d (mm)           | 5      | 5      |
| Dimension b (mm)           | 30     | 40     |
| Dimension s (mm)           | 3.5    | 6.7    |
| Dimension h (mm)           | 7.5    | 16.5   |
| Dimension H (mm)           | 31.5   | 46.5   |

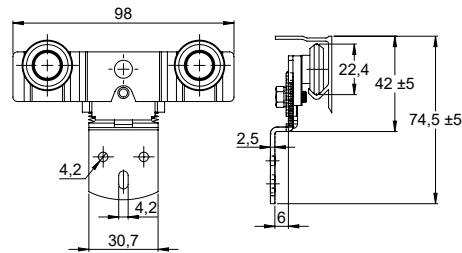
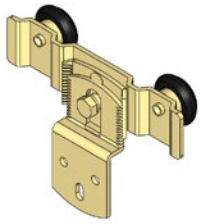
### Light duty sliding door fittings

We reserve the right for technical amendments without obligation.  
The product pictures and drawings depicted in this catalogue do not always reflect all available sizes.

## Adjustable wardrobe wheel hanger (2 wheels)

Type 02.R26

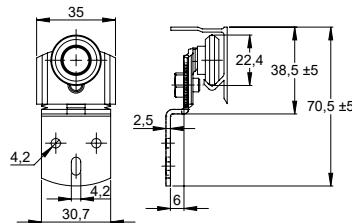
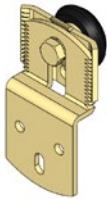
Panel weight up to 30Kg per set of wheel hangers.



## Adjustable wardrobe wheel hanger (1 wheel)

Type 02.R25

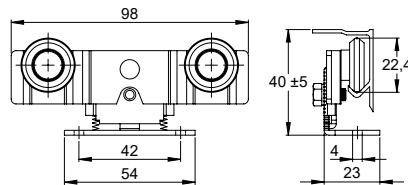
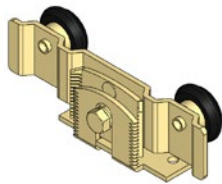
Panel weight up to 20Kg per set of wheel hangers.



## Adjustable wardrobe wheel hanger (2 wheels)

Type 02.R29

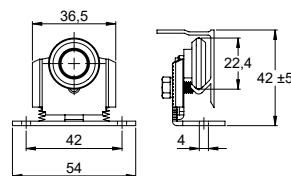
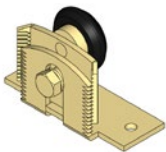
Panel weight up to 30Kg per set of wheel hangers.



## Adjustable wardrobe wheel hanger (1 wheel)

Type 02.R28

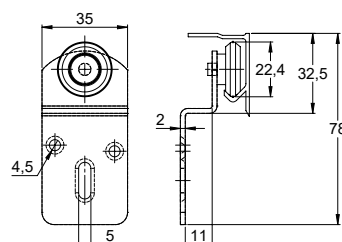
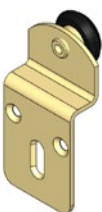
Panel weight up to 20Kg per set of wheel hangers.



## Wardrobe wheel hanger (1 wheel)

Type 01.R25

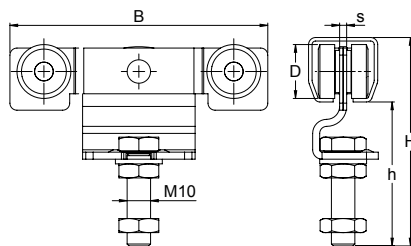
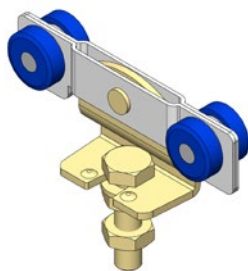
Panel weight up to 20Kg per set of wheel hangers.



## Wheel hanger for sliding door without bracket

Type 12./21.R00

Panel weight up to 45Kg / 75Kg per set of wheel hangers.

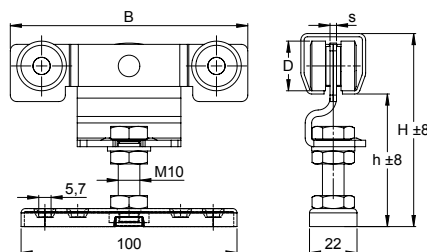
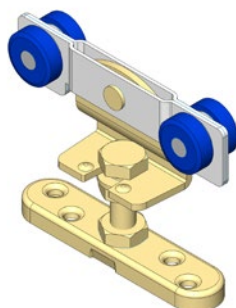


| NIKO Profile No. | 12.000 | 21.000 |
|------------------|--------|--------|
| Part No.         | 12.R00 | 21.R00 |
| Dimension B (mm) | 110    | 110    |
| Dimension D (mm) | 20     | 23     |
| Dimension s (mm) | 2.5    | 3      |
| Dimension h (mm) | 57     | 61     |
| Dimension H (mm) | 81     | 89     |

## Wheel hanger for sliding door with bracket

Type 12./21.R01

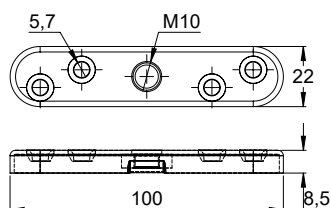
Panel weight up to 45Kg / 75Kg per set of wheel hangers.



| NIKO Profile No. | 12.000 | 21.000 |
|------------------|--------|--------|
| Part No.         | 12.R01 | 21.R01 |
| Dimension B (mm) | 110    | 110    |
| Dimension D (mm) | 20     | 23     |
| Dimension s (mm) | 2.5    | 3      |
| Dimension h (mm) | 49     | 53     |
| Dimension H (mm) | 73     | 81     |

## Bracket

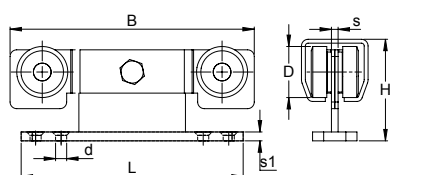
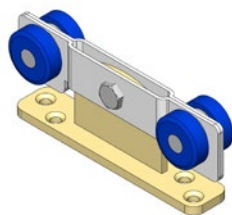
Type 21.F00



## Wheel hanger for sliding door with fixed plate

Type 12./21.R05

Panel weight up to 45Kg / 75Kg per set of wheel hangers.

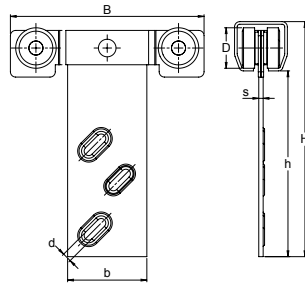
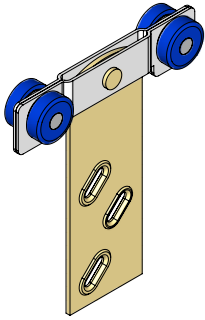


| NIKO Profile No.  | 12.000 | 21.000 |
|-------------------|--------|--------|
| Part No.          | 12.R05 | 21.R05 |
| Dimension B (mm)  | 110    | 110    |
| Dimension L (mm)  | 100    | 100    |
| Dimension D (mm)  | 20     | 23     |
| Dimension s (mm)  | 3      | 3      |
| Dimension s1 (mm) | 4      | 4      |
| Dimension H (mm)  | 43.5   | 45.5   |
| Dimension d (mm)  | 5      | 5      |

## Wheel hanger for sliding door with straight bracket

### Type 12./21.R03

Panel weight up to 45Kg / 75Kg per set of wheel hangers.

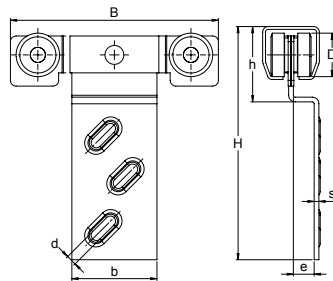
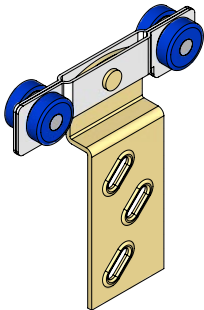


| NIKO Profile No. | 12.000 | 21.000 |
|------------------|--------|--------|
| Part No.         | 12.R03 | 21.R03 |
| Dimension B (mm) | 110    | 110    |
| Dimension D (mm) | 20     | 23     |
| Dimension d (mm) | 5.2    | 5.2    |
| Dimension b (mm) | 45     | 45     |
| Dimension s (mm) | 2.5    | 2.5    |
| Dimension h (mm) | 107    | 105.5  |
| Dimension H (mm) | 131    | 133.5  |

## Wheel hanger for sliding door with corner bracket

### Type 12./21.R04

Panel weight up to 45Kg / 75Kg per set of wheel hangers.

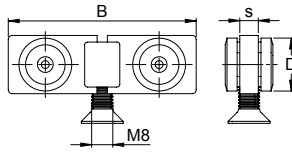
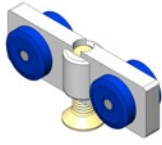


| NIKO Profile No. | 12.000 | 21.000 |
|------------------|--------|--------|
| Part No.         | 12.R04 | 21.R04 |
| Dimension B (mm) | 110    | 110    |
| Dimension D (mm) | 20     | 23     |
| Dimension d (mm) | 5.5    | 5.5    |
| Dimension b (mm) | 45     | 45     |
| Dimension s (mm) | 2.5    | 2.5    |
| Dimension e (mm) | 11     | 11     |
| Dimension h (mm) | 37.5   | 40     |
| Dimension H (mm) | 121    | 123.5  |

## Wheel hanger with nylon body for sliding door

Type 03./07.R46

Panel weight up to 60Kg / 75Kg per set of wheel hangers.

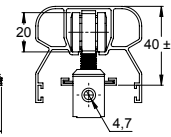
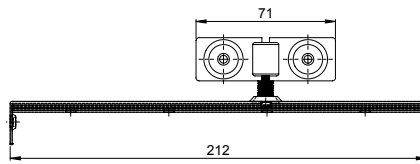
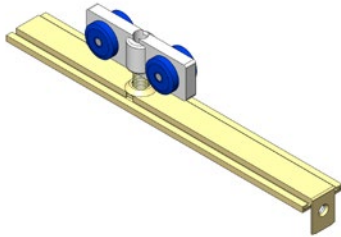


|                  |        |        |
|------------------|--------|--------|
| NIKO Profile No. | 03.000 | 07.000 |
| Part No.         | 03.R46 | 07.R46 |
| Dimension B (mm) | 71     | 71     |
| Dimension D (mm) | 20     | 23     |
| Dimension s (mm) | 7      | 7      |

## Wheel hanger with nylon body and complete plate bracket

Type 03.R45

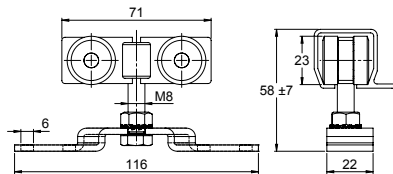
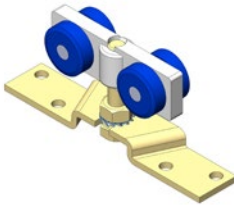
Panel weight up to 60Kg per set of wheel hangers.



## Wheel hanger with nylon body and suspension bracket

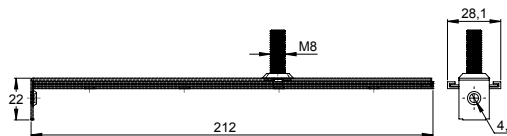
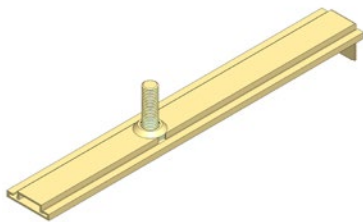
Type 07.R45

Panel weight up to 75Kg per set of wheel hangers.



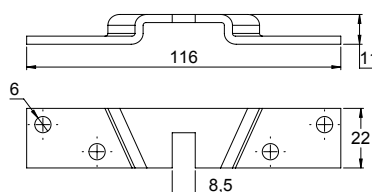
## Complete plate bracket & screw

Type 03.F46



## Suspension bracket

Type 07.F45

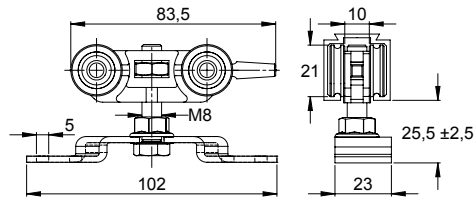
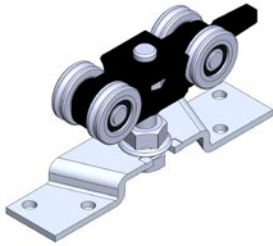




## Wheel hanger with bracket

Type 80.R01

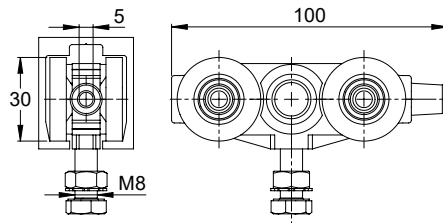
Panel weight up to 80Kg per set of wheel hangers.



## Wheel hanger without bracket

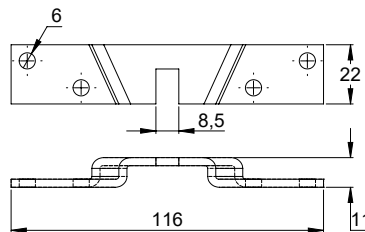
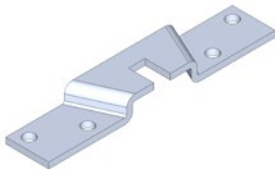
Type 84.R00

Panel weight up to 125Kg per set of wheel hangers.



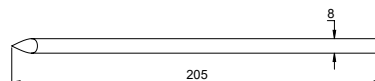
## Bracket

Type 84.030



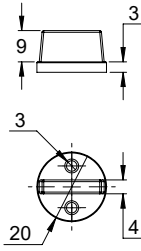
## Track nail

Type 03.X06



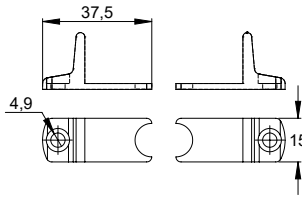
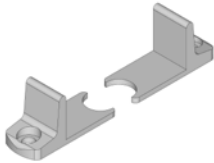
### Guide nylon piece

Type 38.U04



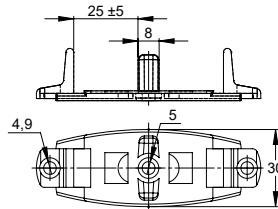
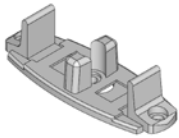
### Panel guide, pair (nylon)

Type 38.U07



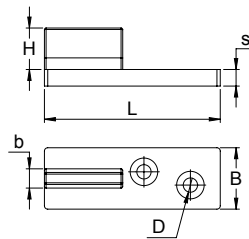
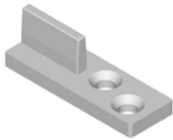
### Double panel guide (nylon)

Type 38.U08



### Guide nylon piece

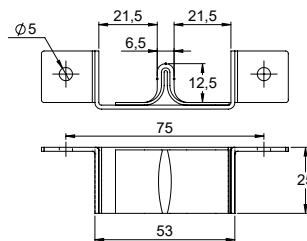
Type 38.U14/.U15



| NIKO Profile No. | 38.000 | 38.000 |
|------------------|--------|--------|
| Part No.         | 38.U14 | 38.U15 |
| Dimension H (mm) | 12,5   | 17,5   |
| Dimension L (mm) | 53     | 54     |
| Dimension s (mm) | 4,8    | 5      |
| Dimension b (mm) | 5,8    | 5,8    |
| Dimension D (mm) | 4,5    | 5,8    |
| Dimension B (mm) | 18,5   | 24,5   |

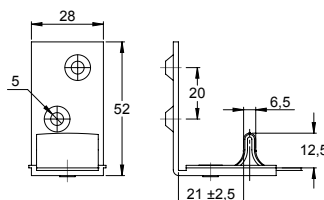
### Guide piece for pocket door (inside wall) panel

Type 38.U45



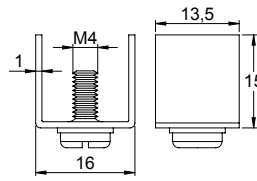
### Guide piece for outside-wall panel

Type 38.U40



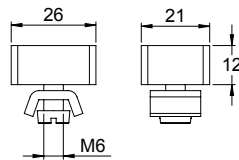
### Track end stop

Type 11.X01

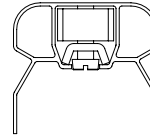


### Track end stop

Type 03.X01

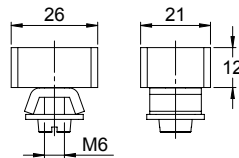


Example

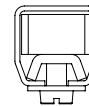


### Track end stop

Type 12.X01

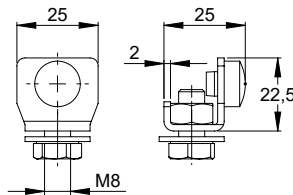


Example



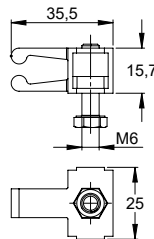
### Track end stop

Type 21.X04



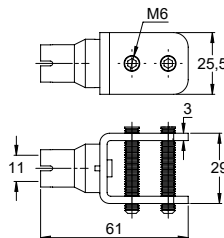
### Capturing end stop

Type 80.X01



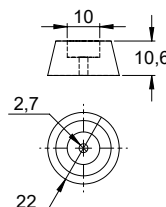
### Capturing end stop

Type 84.X01



### Panel end stop

Type 03.X02







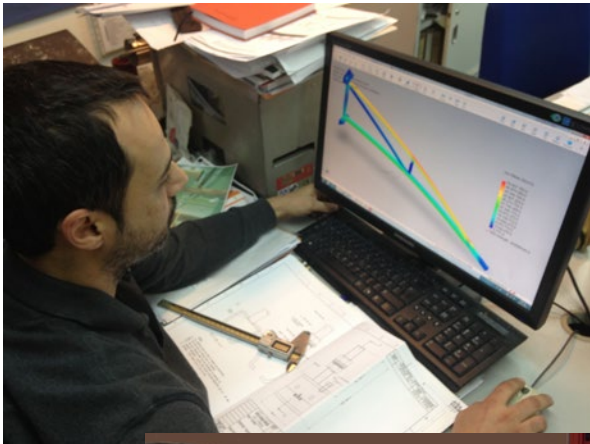


NOTES

Series of horizontal lines for notes.

Light duty
sliding door fittings

Our quality control department is manned with experienced and highly skilled engineers. Our test lab is equipped with endurance test stands, tensile stress equipment, hardness test machines and other laboratory equipment. Virtual stress analysis is also performed during the developing phase of every component.



Light duty sliding door fittings



**AUSTRIA-NIKO Vertriebs GmbH**

Hainfelder Strasse 48  
 A - 2560 Berndorf  
 Tel. 0043 2672-21201  
 Fax 0043 2672-21201-13  
[office.at@niko.eu.com](mailto:office.at@niko.eu.com)  
[www.niko.world](http://www.niko.world)

**CHINA-NIKO TRADING (SHANGHAI) Co., Ltd**

Room 901-156, No.18 TianShan Road,  
 ChangNing District, Shanghai,  
 P.R.China  
 Tel. 0086 158 0064 7160  
[info.cn@niko.eu.com](mailto:info.cn@niko.eu.com)

**GERMANY-NIKO Technik GmbH**

Robert-Bosch-Str. 14  
 DE - 42489 Wülfrath  
 Tel. 0049 (0) 2058 9093603  
 Fax 0049 (0) 2058 9093604  
[office.de@niko.eu.com](mailto:office.de@niko.eu.com)

**GREECE-Helm Hellas S.A.**

82<sup>nd</sup> Km Athens-Korinthos  
 P.O. Box 209  
 GR - 201 00 KORINTHOS  
 Tel. 0030 27410 76800  
 Fax 0030 27410 25368  
[info@niko.eu.com](mailto:info@niko.eu.com)

**POLAND- NIKO Polska**

Wojska Polskiego 65A  
 PL - Wielun 98-300  
 Tel. 0048 504 00 35 56  
[info.pl@niko.eu.com](mailto:info.pl@niko.eu.com)

**UNITED KINGDOM-NIKO Ltd**

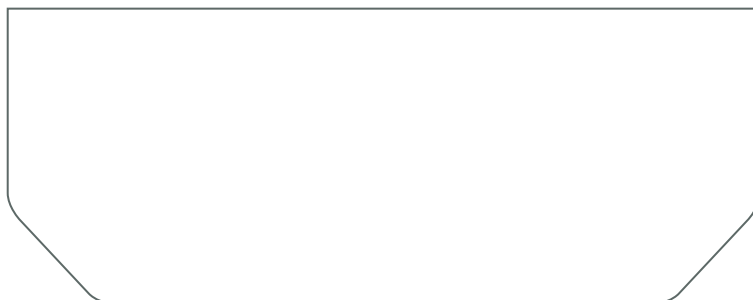
Units 15-21, Insight Park  
 Welsh Road East, Southam  
 Warwickshire, CV47 1NE -UK  
 Tel. 0044 (0) 1926 813111  
 Fax 0044 (0) 1926 815599  
[Sales@niko.co.uk](mailto:Sales@niko.co.uk)  
[www.niko.co.uk](http://www.niko.co.uk)

**USA-NIKO Track**

300 Highpoint Ave  
 USA - Portsmouth, RI. 02871  
 Tel. 001 (0) 401 683 7525  
 Fax 001 (0) 401 293 3848  
[info@nikotrack.com](mailto:info@nikotrack.com)  
[www.nikotrack.com](http://www.nikotrack.com)

[www.niko.eu.com](http://www.niko.eu.com)   [www.niko.co.uk](http://www.niko.co.uk)   [www.nikotrack.com](http://www.nikotrack.com)   [www.niko.world](http://www.niko.world)

Your **NIKO** agent will be happy to advise you:



Complete **NIKO** product range:

- Light duty sliding door hardware
- Heavy duty sliding door hardware
- Conveyor systems
- Light cranes
- Cable trolleys, festoon systems & conductor bars
- Personal fall arrest systems (EN 795)
- Accessories for gates and doors

Copyright NIKO | Version November 2018  
 We take no obligation for layout, composition, technical modifications as well as misprints.  
 Subject to technical modifications / images can be differ from original.