

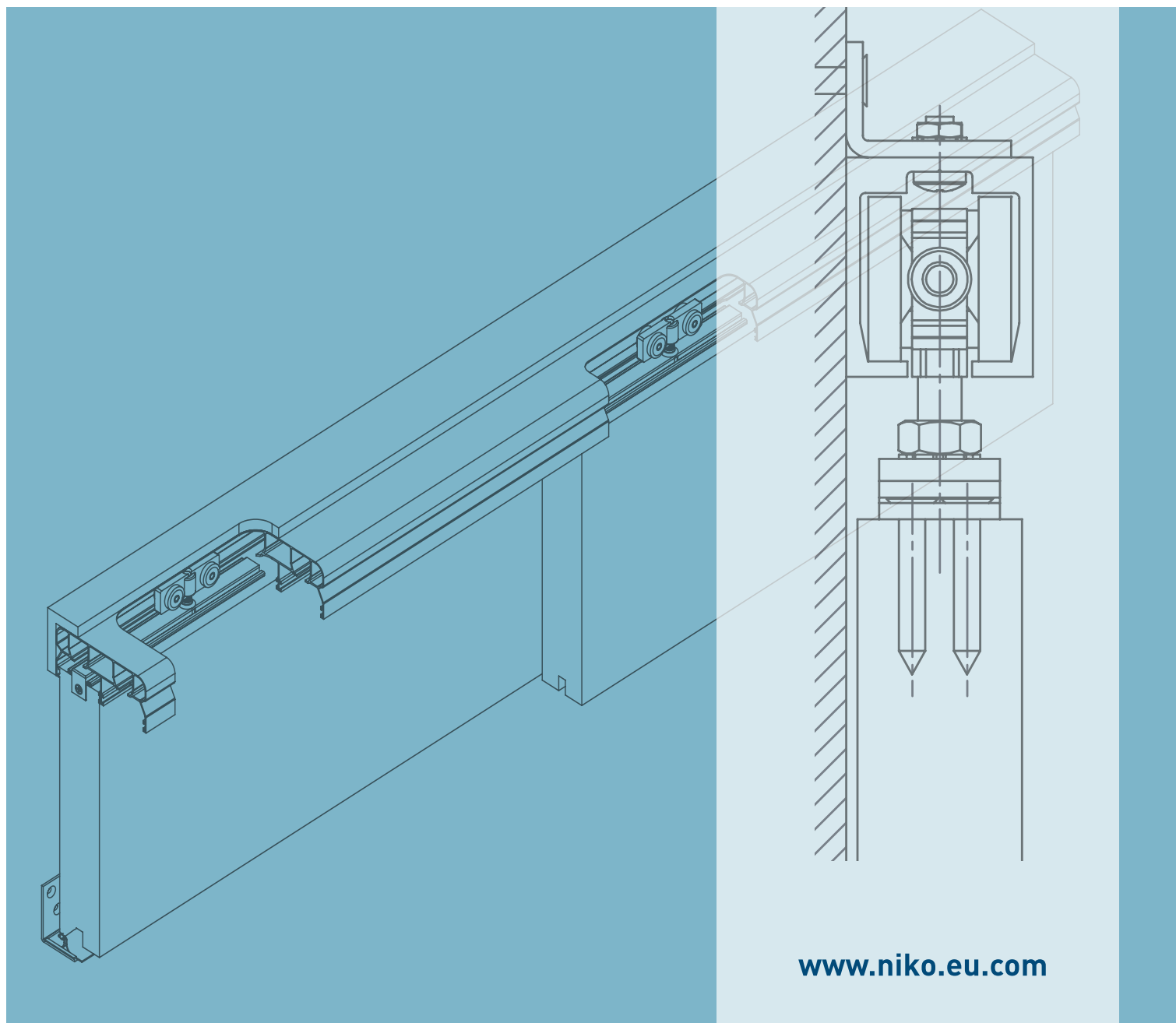
Light duty

Sliding door fittings

Product Catalogue



NIKO ...Quality in Motion



www.niko.eu.com



Global LOCATIONS & HEAD OFFICE

Light duty
sliding door fittings



Light duty sliding door fittings

We reserve the right for technical amendments without obligation.
The product pictures and drawings depicted in this catalogue
do not always reflect all available sizes.

Ver. November 2018

www.niko.eu.com



Light duty sliding door fittings

We reserve the right for technical amendments without obligation.
The product pictures and drawings depicted in this catalogue
do not always reflect all available sizes.

Ver. November 2018

www.niko.eu.com

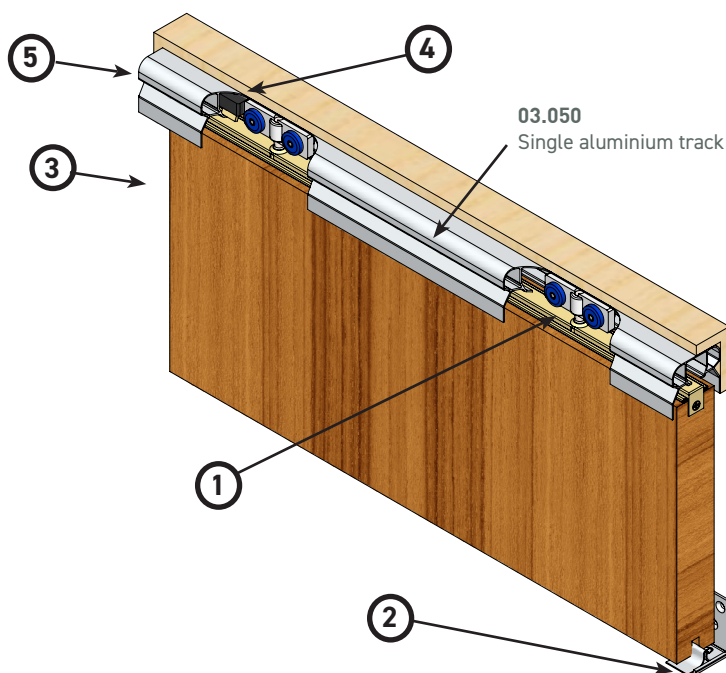
Contents

Sliding door kit applications	Page	6-11
Steel track profiles & bends	Page	12
Aluminium track profiles	Page	13-14
Support brackets & joints	Page	15-17
Wheel hangers & brackets for wheel hangers	Page	18-25
Guide pieces	Page	26
End stops	Page	27
Notes	Page	28-30

Application examples - Sliding door assemblies

SLIDING DOOR KIT NIKO SERIES 03. (with aluminium track)

KIT for panel weight up to 60 Kg



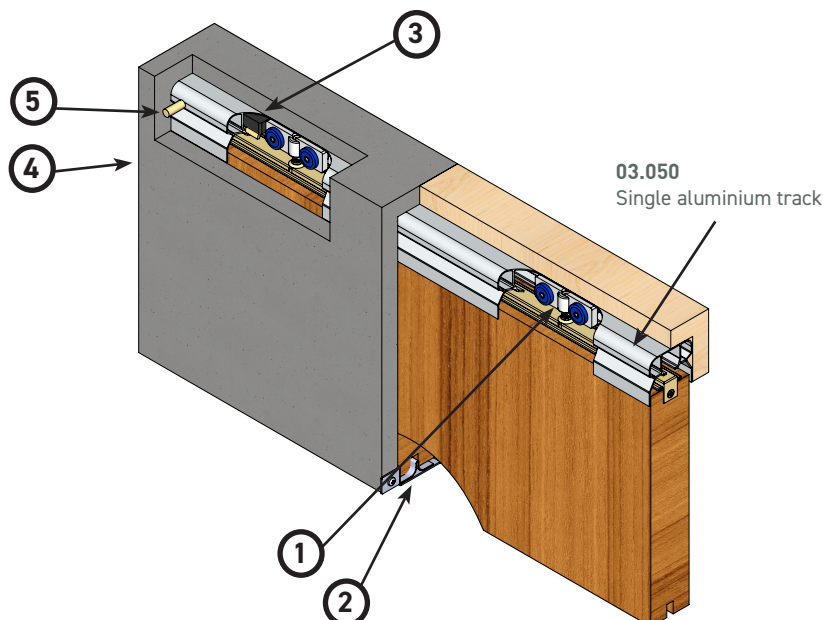
The components set 03.900 includes :

No.	Quantity (pcs)	Description		Page
1	2	Wheel hanger with nylon body and complete plate bracket	03.R45	24
2	1	Guide piece for outside-wall panel	38.U40	26
3	1	Panel end stop	03.X02	27
4	2	Track end stop	03.X01	27
5	1	Plastic track cap	03.X05	17

All components set are provided with 1 screw set.

SLIDING DOOR KIT NIKO SERIES 03. FOR POCKET DOOR (SLIDING INSIDE WALL) WITH A LONG PLATE - BRACKET (with aluminium track)

KIT for panel weight up to 60 Kg



The components set 03.910 includes :

No.	Quantity (pcs)	Description		Page
1	2	Wheel hanger with nylon body for sliding door	03.R46	24
2	1	Guide piece for pocket door (inside wall) panel	38.U45	26
3	2	Track end stop	03.X01	27
4	1	Panel end stop	03.X02	27
5	1	Track nail	03.X06	25

All components set are provided with 1 screw set.

Light duty sliding door fittings

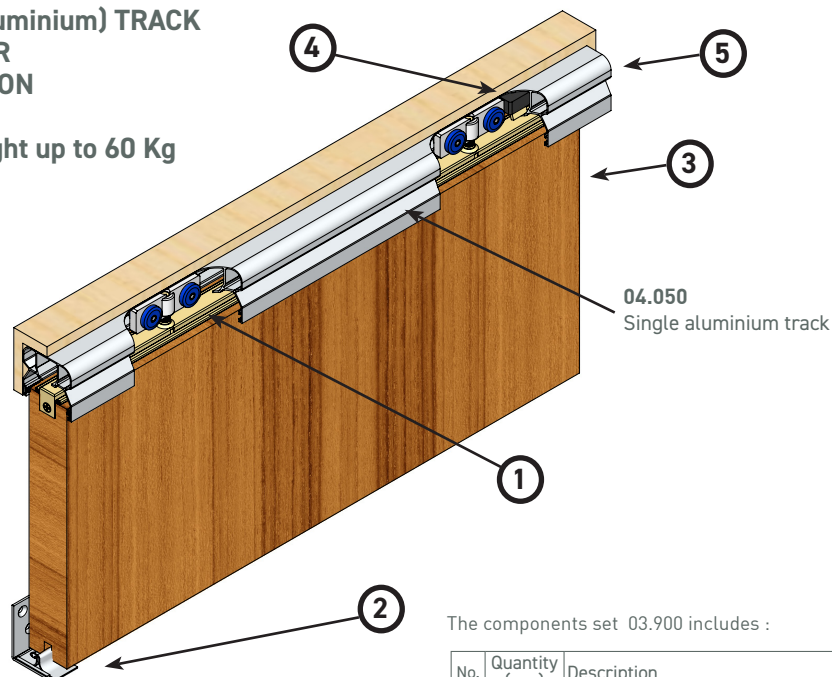
We reserve the right for technical amendments without obligation.
The product pictures and drawings depicted in this catalogue
do not always reflect all available sizes.

Ver. November 2018

www.niko.eu.com

SLIDING DOOR KIT NIKO SERIES 04. WITH SINGLE (Aluminium) TRACK WITH OPTION FOR BRUSH INSULATION

KIT for panel weight up to 60 Kg



The components set 03.900 includes :

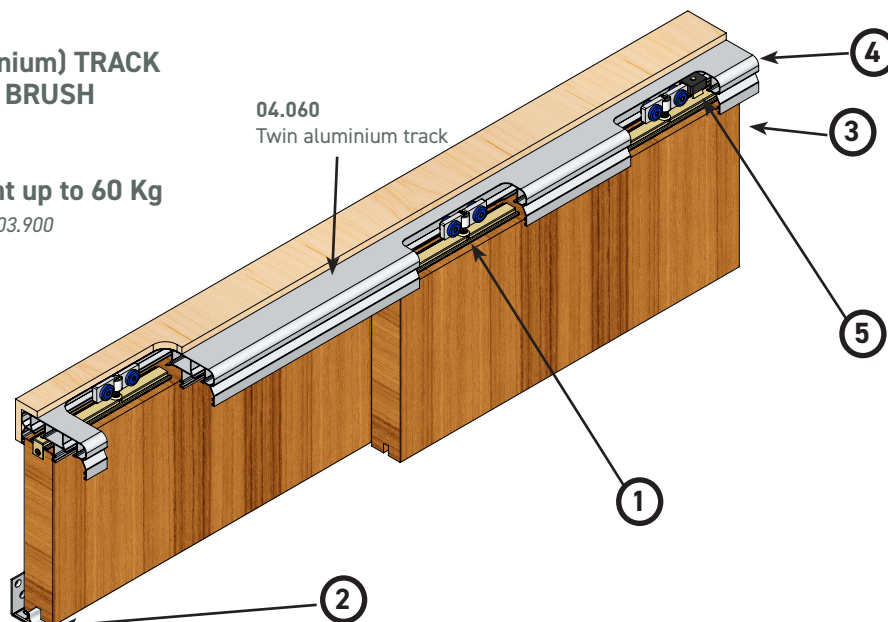
No.	Quantity (pcs)	Description		Page
1	2	Wheel hanger with nylon body and complete plate bracket	03.R45	24
2	1	Guide piece for outside-wall panel	38.U40	26
3	1	Panel end stop	03.X02	27
4	2	Track end stop	03.X01	27
5	1	Plastic track cap	03.X05	17

All components set are provided with 1 screw set.

SLIDING DOOR KIT NIKOS SERIES 04. WITH TWIN (aluminium) TRACK WITH OPTION FOR BRUSH INSULATION

KIT for panel weight up to 60 Kg

This kit requires 2 sets of 03.900



The components set 03.900 includes :

No.	Quantity (pcs)	Description		Page
1	2	Wheel hanger with nylon body and complete plate bracket	03.R45	24
2	1	Guide piece for outside-wall panel	38.U40	26
3	1	Panel end stop	03.X02	27
4	1	Plastic track cap	03.X05	17
5	2	Track end stop	03.X01	27

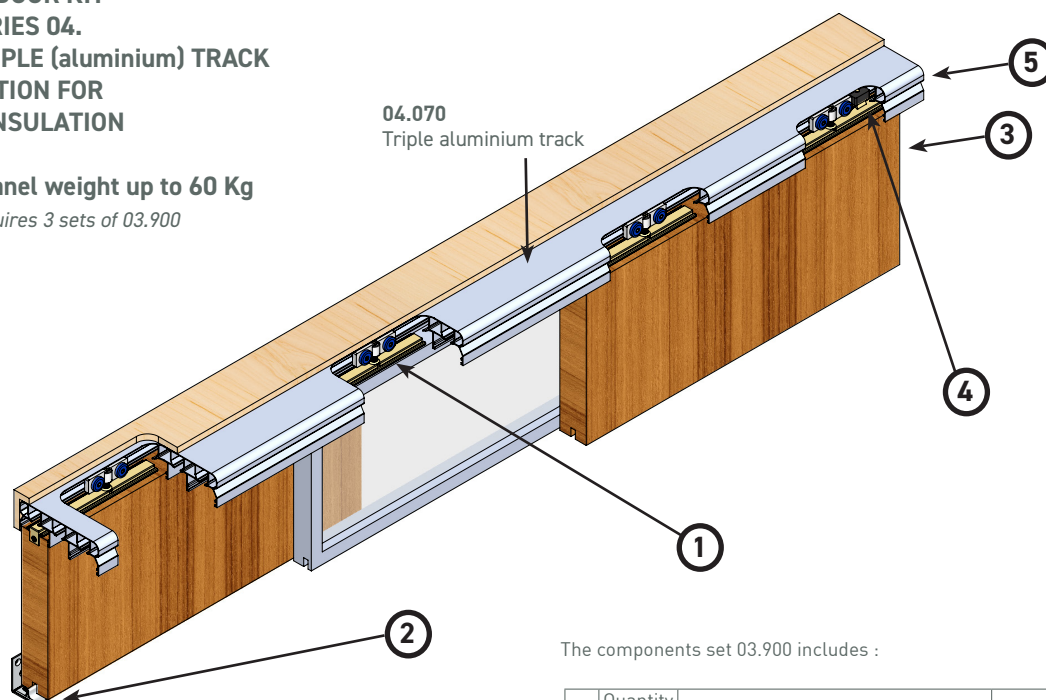
All components set are provided with 1 screw set.

Application examples - Sliding door assemblies

SLIDING DOOR KIT NIKO SERIES 04. WITH TRIPLE (aluminium) TRACK WITH OPTION FOR BRUSH INSULATION

KIT for panel weight up to 60 Kg

This kit requires 3 sets of 03.900

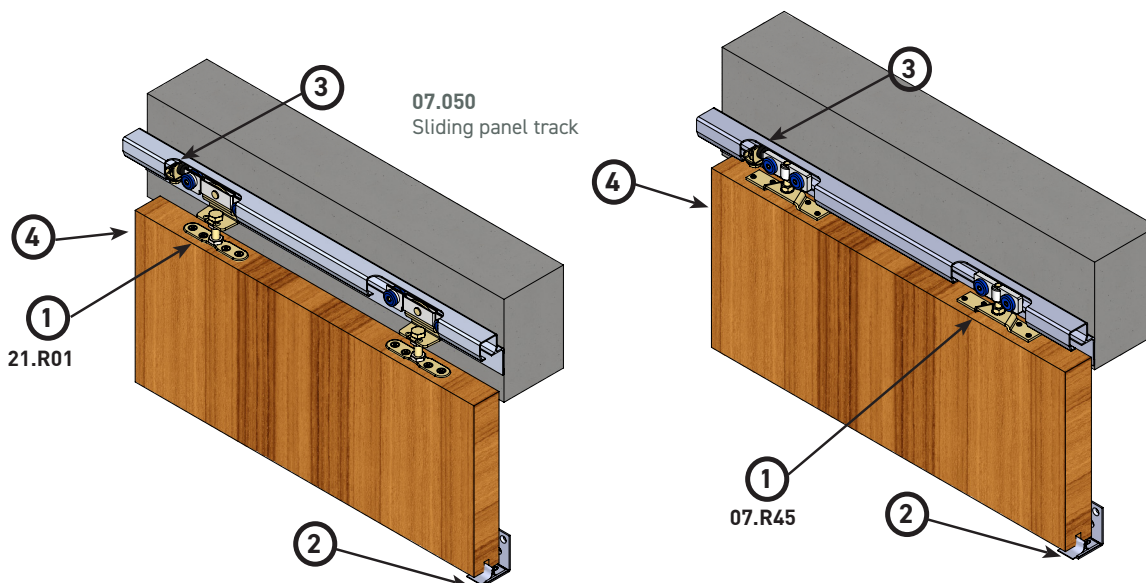


*All components set are provided with
1 screw set.*

The components set 03.900 includes :

No.	Quantity (pcs)	Description		Page
1	2	Wheel hanger with nylon body and complete plate bracket	03.R45	24
2	1	Guide piece for outside-wall panel	38.U40	26
3	1	Panel end stop	03.X02	27
4	2	Track end stop	03.X01	27
5	1	Plastic track cap	03.X05	17

SLIDING DOOR KIT NIKO SERIES 07. (with aluminium track) KIT for panel weight up to 75 Kg



*All components set are provided with
1 screw set.*

The components set 07.900/910 includes :

No.	Quantity (pcs)	Description		Page
1	2	Wheel hanger for sliding door with bracket [07.900]	21.R01	22
1	2	Wheel hanger with nylon body and suspension bracket [07.910]	07.R45	24
2	1	Guide piece for outside-wall panel	38.U40	26
3	2	Track end stop	21.X04	27
4	1	Panel end stop	03.X02	27

Light duty sliding door fittings

We reserve the right for technical amendments without obligation.
The product pictures and drawings depicted in this catalogue
do not always reflect all available sizes.

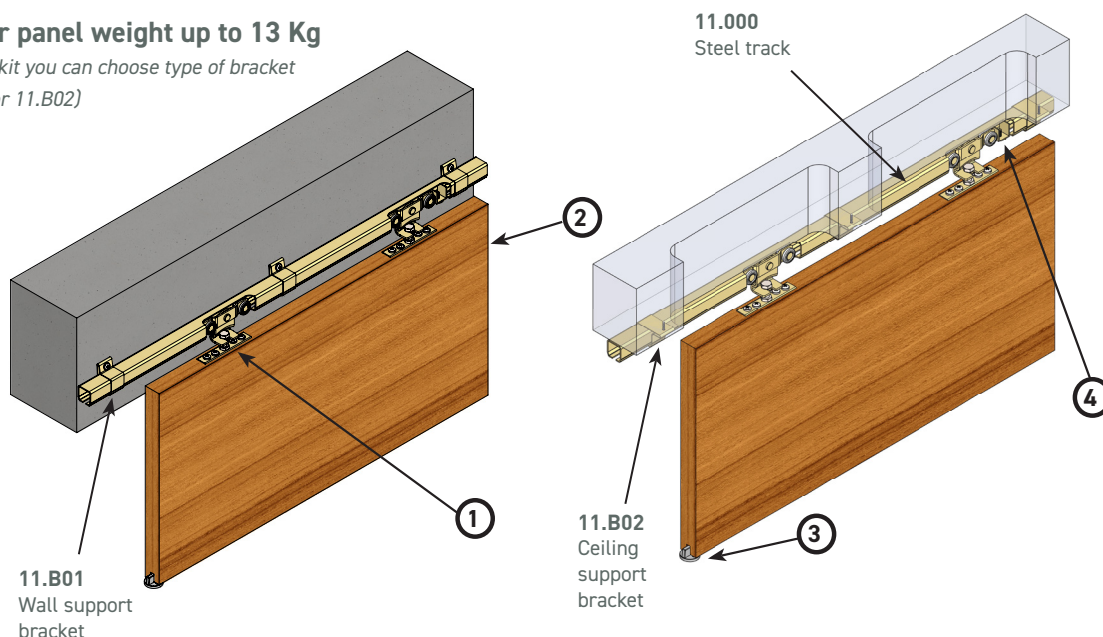
Ver. November 2018

www.niko.eu.com

SLIDING DOOR KIT NIKO SERIES 11. (with steel track & double bracket)

KIT for panel weight up to 13 Kg

For this kit you can choose type of bracket
11.B01 or 11.B02)



The components set 11.901 includes :

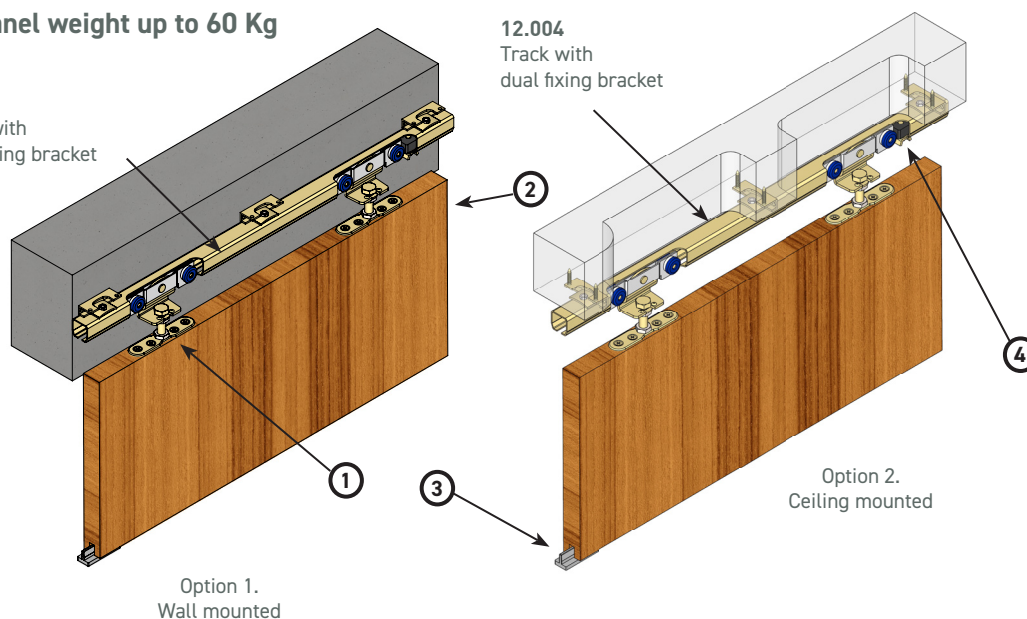
No.	Quantity (pcs)	Description		Page
1	2	Wheel hanger with screw fixing bracket (4 wheels)	11.R01	22
2	1	Panel end stop	03.X02	27
3	1	Guide nylon piece	38.U04	26
4	2	Track end stop	11.X01	27

All components set are provided with 1 screw set.

SLIDING DOOR KIT NIKO SERIES 12. (with steel track & dual fixing bracket)

KIT for panel weight up to 60 Kg

12.004
Track with
dual fixing bracket



The components set 12.900 includes :

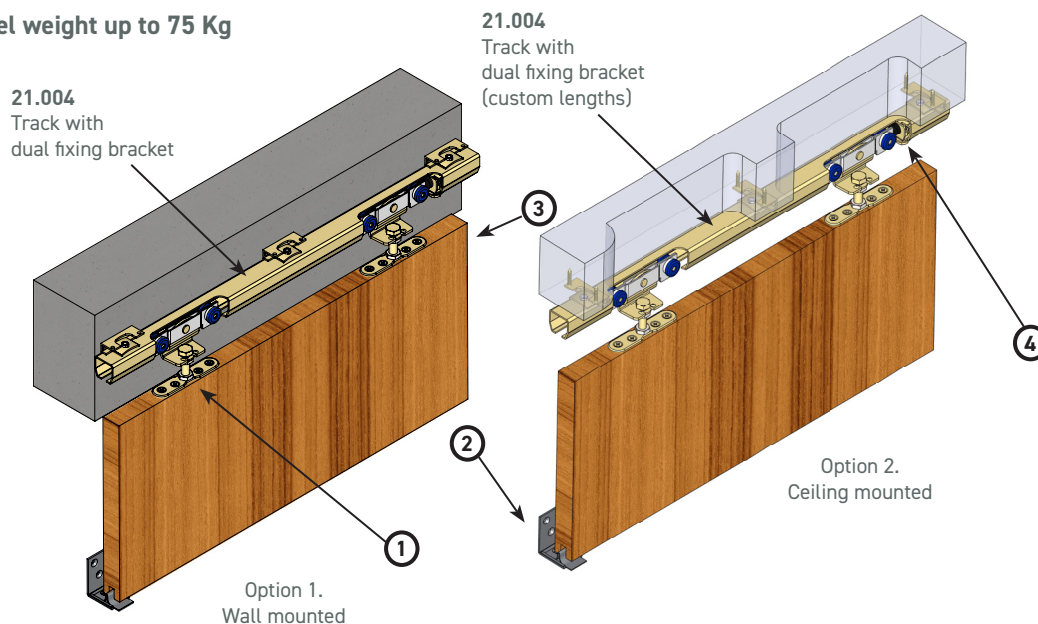
No.	Quantity (pcs)	Description		Page
1	2	Wheel hanger for sliding door with bracket	12.R01	22
2	1	Panel end stop	03.X02	27
3	1	Guide nylon piece	38.U14	26
4	2	Track end stop	12.X01	27

All components set are provided with 1 screw set.

Application examples - Sliding door assemblies

SLIDING DOOR KIT NIKO SERIES 21. (with steel track & dual fixing bracket)

KIT for panel weight up to 75 Kg



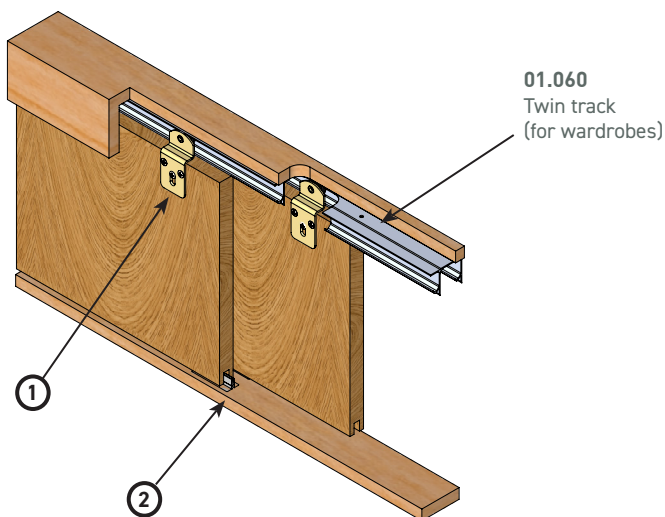
The components set 21.900 includes :

No.	Quantity (pcs)	Description		Page
1	2	Wheel hanger for sliding door with bracket	21.R01	22
2	1	Guide piece for outside-wall panel	38.U40	26
3	1	Panel end stop	03.X02	27
4	2	Track end stop	21.X04	27

All components set are provided with 1 screw set.

KIT FOR SLIDING DOOR PANELS FOR WARDROBES, SHOP WINDOWS ETC. NIKO SERIES 01. (with twin aluminium track)

KIT for panel weight up to 20 kg



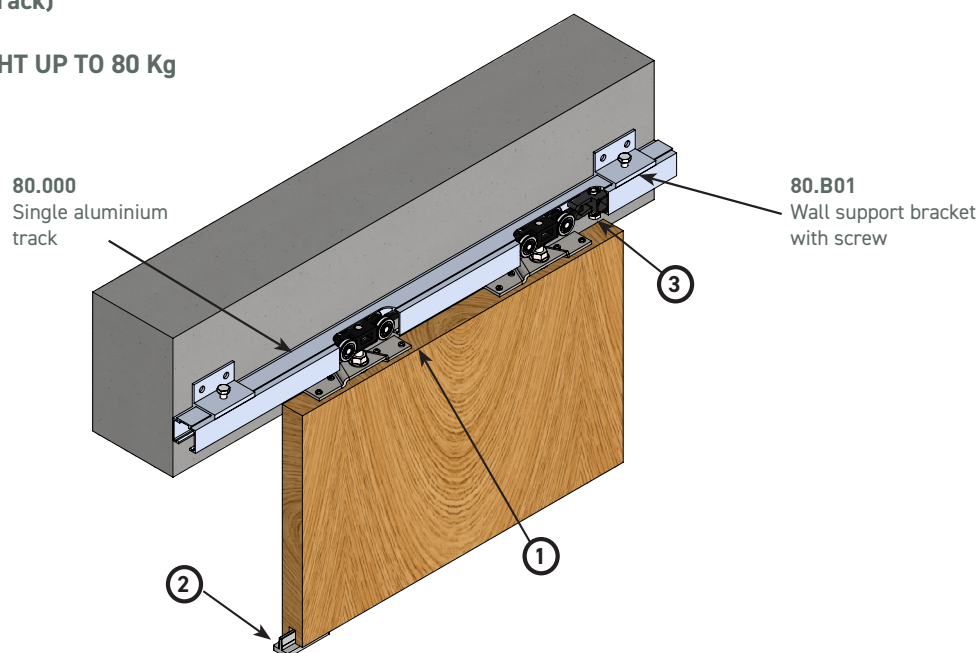
The components set 01.900 includes :

No.	Quantity (pcs)	Description		Page
1	4	Wardrobe wheel hanger (1 wheel)	01.R25	21
2	2	Guide nylon piece	38.U15	26

All components set are provided with 1 screw set.

SLIDING DOOR KIT - NIKO SERIES 80. (LLK) (with aluminium track)

FOR PANEL WEIGHT UP TO 80 Kg



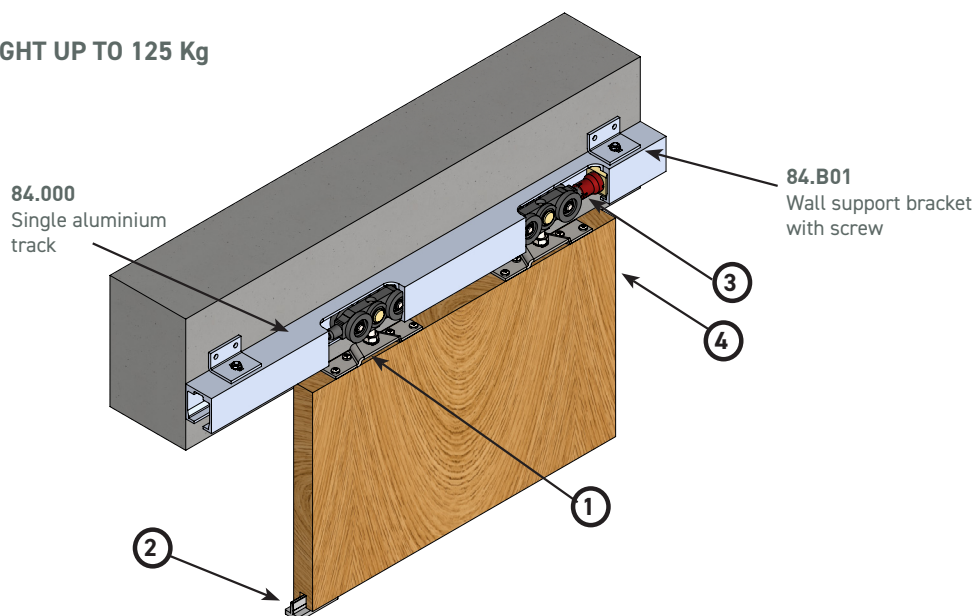
The components set 80.100 includes :

No.	Quantity (pcs)	Description		Page
1	2	Wheel hanger with bracket	80.R01	25
2	1	Guide nylon piece	38.U14	26
3	2	Capturing end stop	80.X01	27

All components set are provided with 1 screw set.

SLIDING DOOR KIT - NIKO SERIES 84. (LLK) (with aluminium track)

FOR PANEL WEIGHT UP TO 125 Kg



The components set 84.100 includes :

No.	Quantity (pcs)	Description		Page
1	2	Wheel hanger	84.R00	25
1	2	Bracket	84.030	25
2	1	Guide nylon piece	38.U14	26
3	2	Capturing end stop	84.X01	27
4	1	Panel end stop	03.X02	27

All components set are provided with 1 screw set.

Light duty sliding door fittings

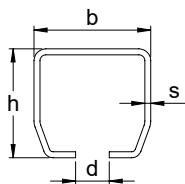
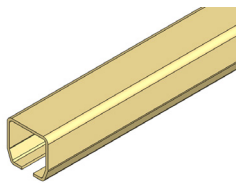
We reserve the right for technical amendments without obligation.
The product pictures and drawings depicted in this catalogue
do not always reflect all available sizes.

Ver. November 2018

www.niko.eu.com

Steel track zinc plated

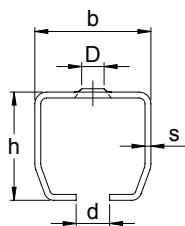
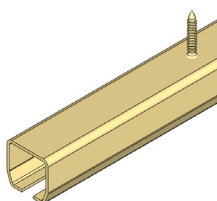
Type .000



NIKO Profile No.	Dimensions			
	h (mm)	b (mm)	d (mm)	s (mm)
11.000	19	19	5	1.2
12.000	24	25	7	1.5
21.000	28	30	8	1.75

Drilled track zinc plated

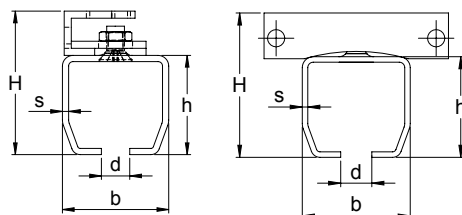
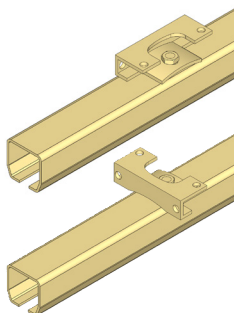
Type .002



NIKO Profile No.	Dimensions				
	h (mm)	b (mm)	d (mm)	D (mm)	s (mm)
11.000	19	19	5	-	1.2
12.000	24	25	7	4.8	1.5
21.000	28	30	8	4.8	1.75

Track zinc plated with dual fixing bracket

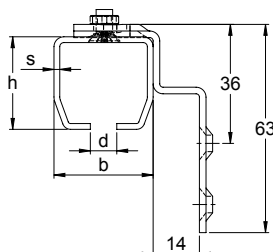
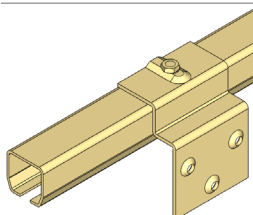
Type .004



NIKO Profile No.	12.000	21.000
Part No.	12.004/.005	21.004/.005
Dimension H (mm)	36.5	40.5
Dimension h (mm)	24	28
Dimension b (mm)	25	30
Dimension d (mm)	7	8
Dimension s (mm)	1.5	1.75

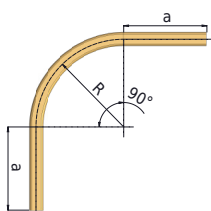
Track zinc plated with wall support

Type .006



NIKO Profile No.	12.000	21.000
Part No.	12.006/.007	21.006/.007
Dimension h (mm)	24	28
Dimension b (mm)	25	30
Dimension d (mm)	7	8
Dimension s (mm)	1.5	1.75

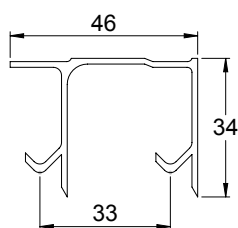
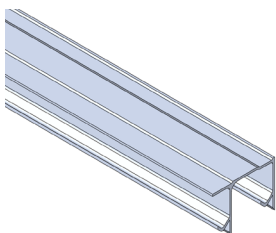
Track bend 90°



NIKO Profile No.	11.000		12.000			21.000		
Part No.	11.C02	11.C05	12.C02	12.C04	12.C06	21.C02	21.C04	21.C06
Standard radius (mm)	-	485±10	-	-	650±10	-	-	650±10
Small radius (mm)	250±10	-	205±10	400±10	-	205±10	400±10	-
a (mm)	553±20	620±20	590±20	686±20	490±20	590±20	686±20	490±20

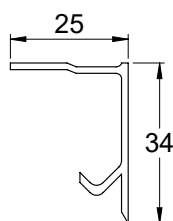
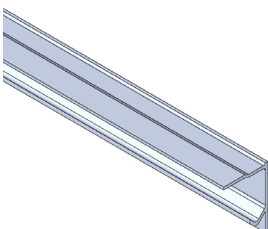
Twin track (for wardrobes)

Type 01.060



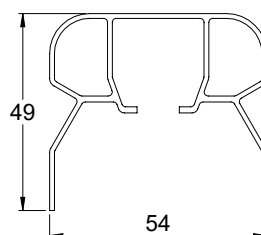
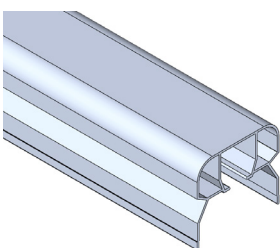
Single track (for wardrobes)

Type 01.050



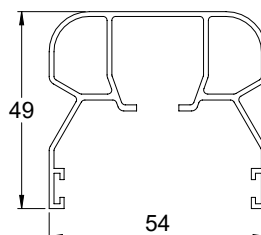
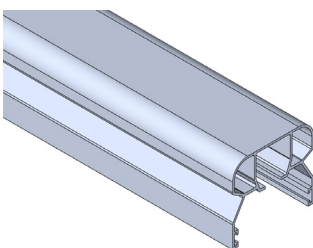
Single track

Type 03.050



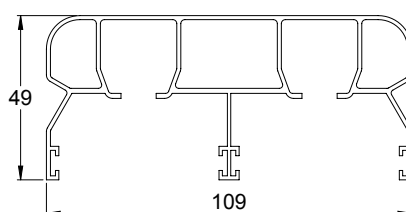
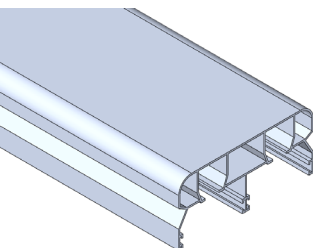
Single track with slot for brush insulator

Type 04.050



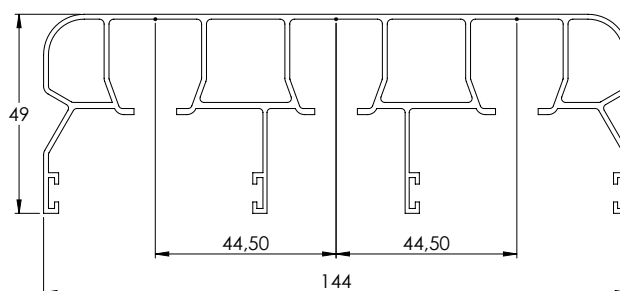
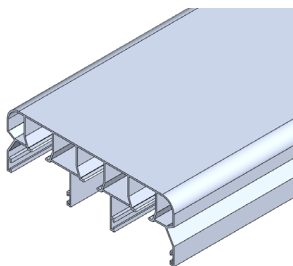
Twin track with slot for brush insulator

Type 04.060



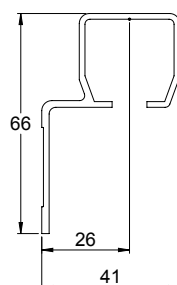
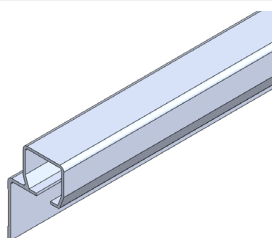
Triple track with slot for brush insulator

Type 04.070



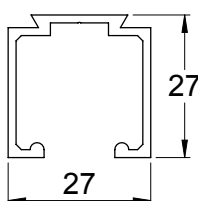
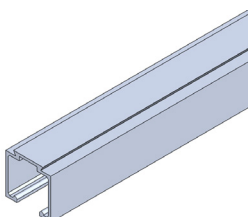
Sliding panel track

Type 07.050



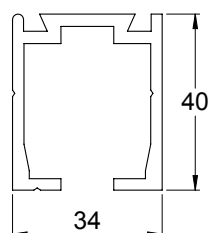
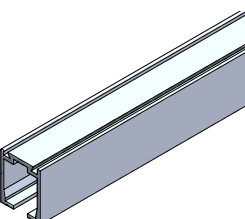
Single aluminium track

Type 80.000



Single aluminium track

Type 84.000



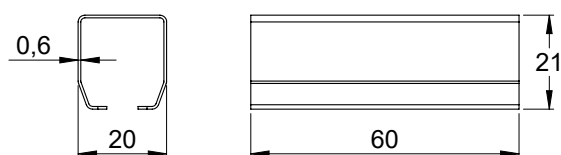
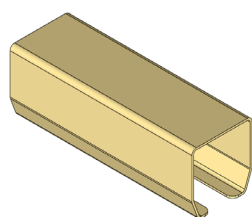
Brush insulator

Type 04.X10



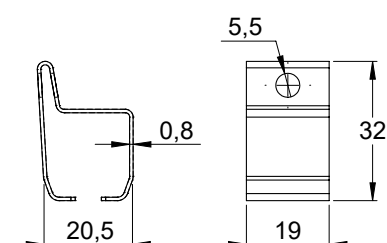
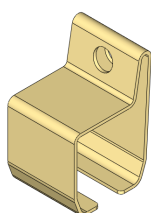
Splice joint (clip)

Type 11.B49



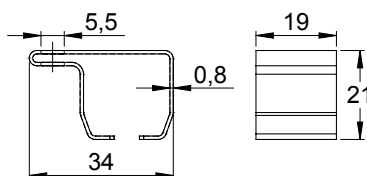
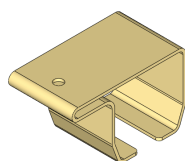
Wall support bracket (clip)

Type 11.B01



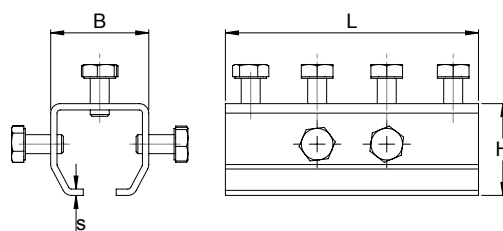
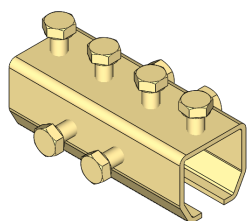
Ceiling support bracket (clip)

Type 11.B02



Splice joint

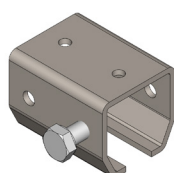
Type 12./21.B49



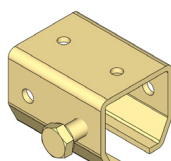
NIKO Profile No.	12.000	21.000
Part No.	12.B49	21.B49
B (mm)	31	38
L (mm)	80	85
s (mm)	2	3
H (mm)	29	36

Support bracket zinc plated/ plain (un-plated)

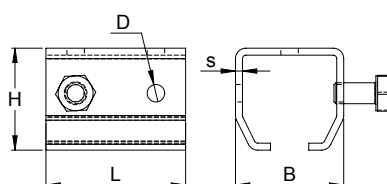
Type 12./21.B00/.B50



.B50, plain



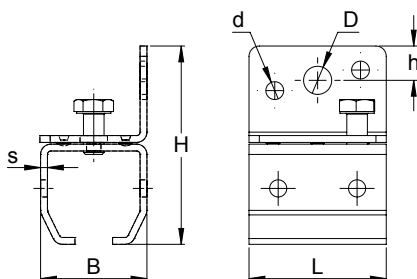
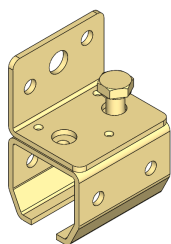
.B00



NIKO Profile No.	12.000	21.000
Part No.	12.B00/.B50	21.B00/.B50
B (mm)	31	38
L (mm)	40	40
D (mm)	5	5
s (mm)	2	3
H (mm)	29	36

Wall support bracket

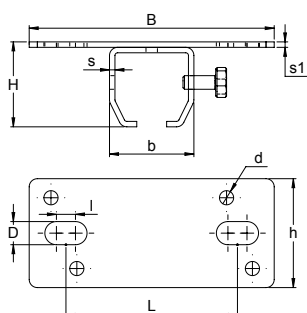
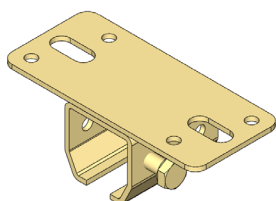
Type 12./21.B01



NIKO Profile No.	12.000	21.000
Part No.	12.B01	21.B01
B (mm)	31	38
D (mm)	8	8
d (mm)	5.2	5.2
L (mm)	40	40
s (mm)	2	3
h (mm)	10	10
H (mm)	57	60

Ceiling support bracket

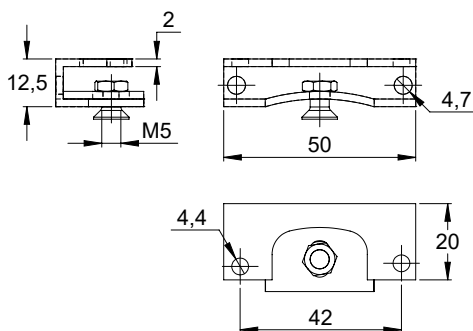
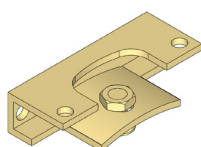
Type 12./21.B02



NIKO Profile No.	12.000	21.000
Part No.	12.B02	21.B02
B (mm)	90	90
H (mm)	31	39
s (mm)	2	3
s1 (mm)	2	3
b (mm)	31	38
D (mm)	8	8
l (mm)	7	7
L (mm)	64	64
d (mm)	5	5.2
h (mm)	40	40

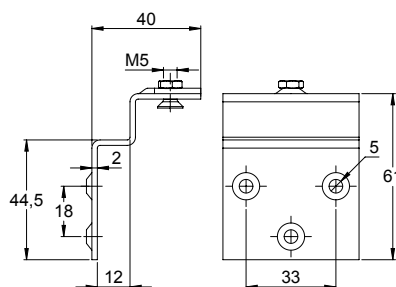
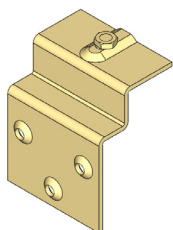
Ceiling-wall bracket for drilled track

Type 12.B41



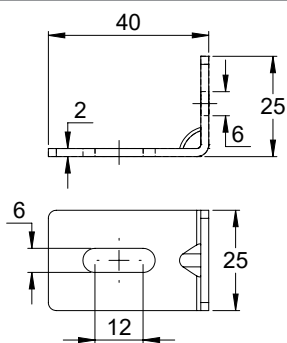
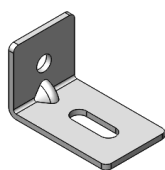
Wall bracket for drilled track

Type 12.B42



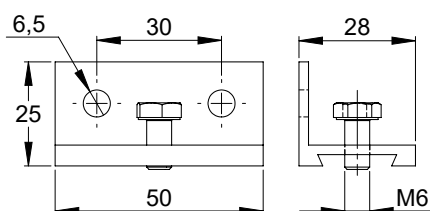
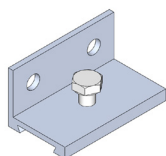
Wall bracket for drilled track

Type 03.B44



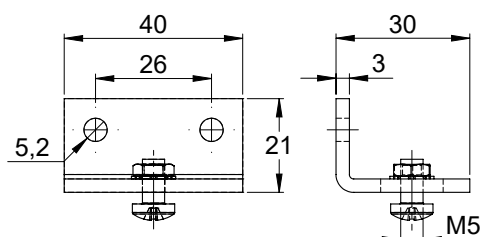
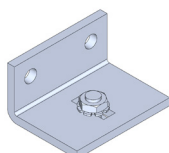
Wall bracket

Type 80.B01



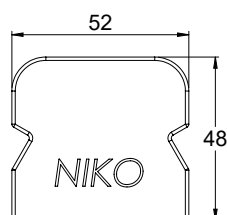
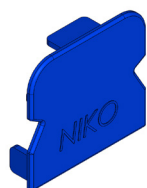
Wall bracket

Type 84.B01



Plastic track cap

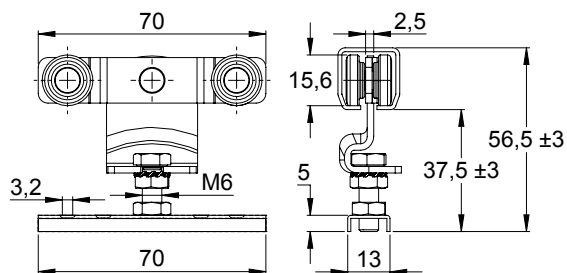
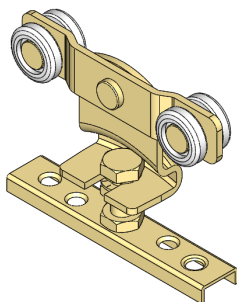
Type 03.X05



Wheel hanger with screw fixing bracket (4 wheels)

Type 11.R01

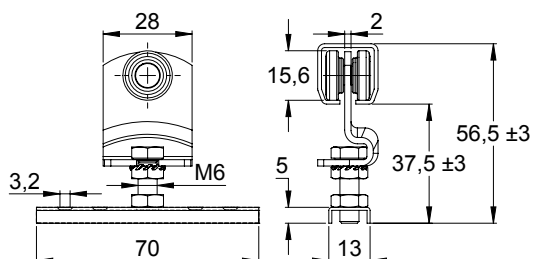
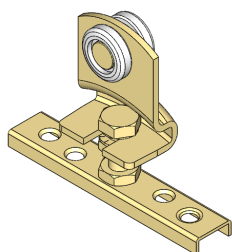
Panel weight up to 13Kg per set of wheel hangers.



Wheel hanger with screw fixing bracket (2 wheels)

Type 11.R10

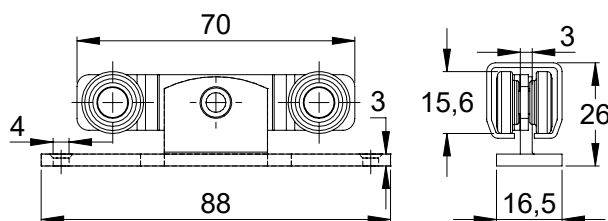
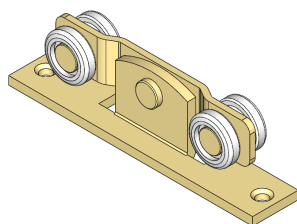
Panel weight up to 9Kg per set of wheel hangers.



Wheel hanger with fixed bracket (4 wheels)

Type 11.R05

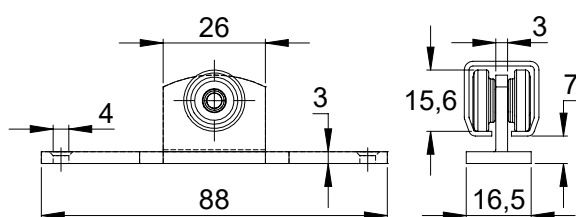
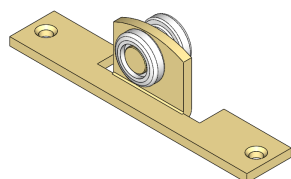
Panel weight up to 13Kg per set of wheel hangers.



Wheel hanger with fixed bracket (2 wheels)

Type 11.R15

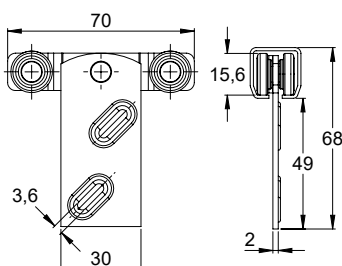
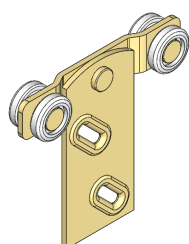
Panel weight up to 9Kg per set of wheel hangers.



Wheel hanger with straight bracket (4 wheels)

Type 11.R03

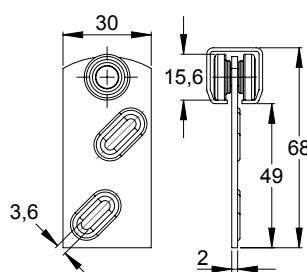
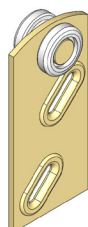
Panel weight up to 13Kg per set of wheel hangers.



Wheel hanger with straight bracket (2 wheels)

Type 11.R13

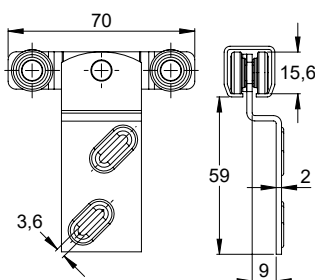
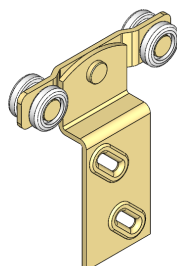
Panel weight up to 9Kg per set of wheel hangers.



Wheel hanger with corner bracket (4 wheels)

Type 11.R04

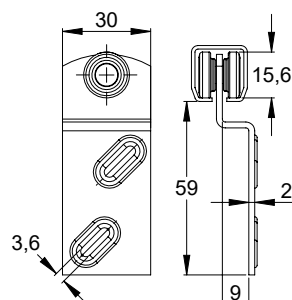
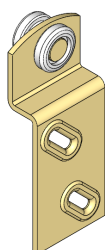
Panel weight up to 13Kg per set of wheel hangers.



Wheel hanger with corner bracket (2 wheels)

Type 11.R14

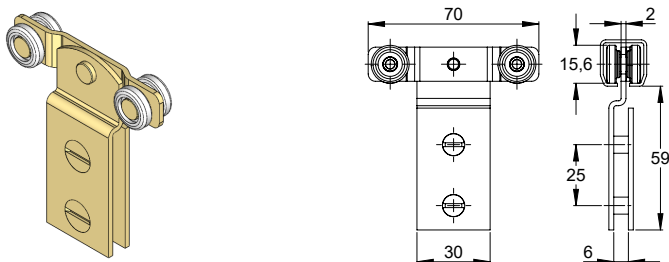
Panel weight up to 9Kg per set of wheel hangers.



Wheel hanger for sliding glass

Type 11.R40

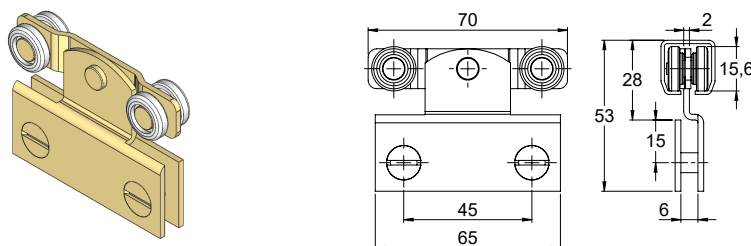
Panel weight up to 13Kg per set of wheel hangers.



Wheel hanger for sliding glass

Type 11.R41

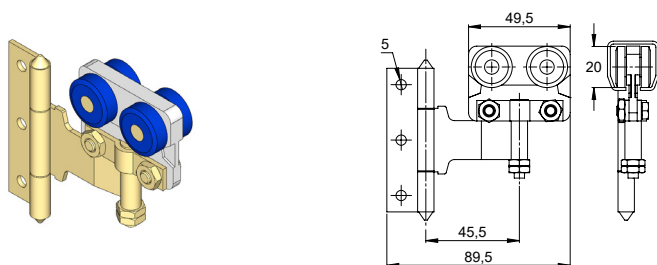
Panel weight up to 13Kg per set of wheel hangers.



Wheel hanger for folding wardrobe panels

Type 12.R43

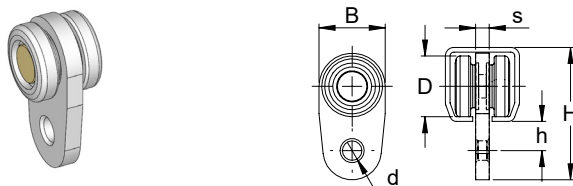
Panel weight up to 20Kg.



Wheel hanger for curtains

Type 11./12.R31

12.R31 body with enclosed ball bearing.

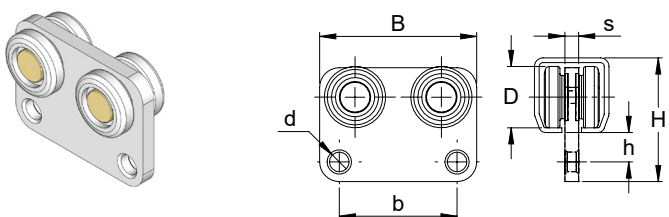


NIKO Profile No.	11.000	12.000
Part No.	11.R31	12.R31
Load per wheel hanger (Kg)	2.5	5
Dimension B (mm)	17	22.5
Dimension D (mm)	15.6	20
Dimension d (mm)	5	5
Dimension s (mm)	3.5	6.5
Dimension h (mm)	7.5	18.5
Dimension H (mm)	34	47

Leading wheel hanger for curtains

Type 11./12.R32

12.R32 body with enclosed ball bearings.

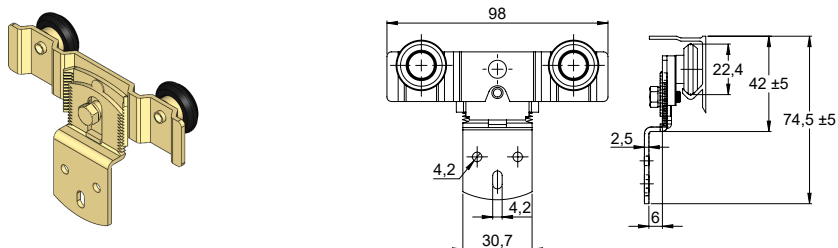


NIKO Profile No.	11.000	12.000
Part No.	11.R32	12.R32
Load per wheel hanger (Kg)	2.5	5
Dimension B (mm)	40	52
Dimension D (mm)	15.6	20
Dimension d (mm)	5	5
Dimension b (mm)	30	40
Dimension s (mm)	3.5	6.7
Dimension h (mm)	7.5	16.5
Dimension H (mm)	31.5	46.5

Adjustable wardrobe wheel hanger (2 wheels)

Type 02.R26

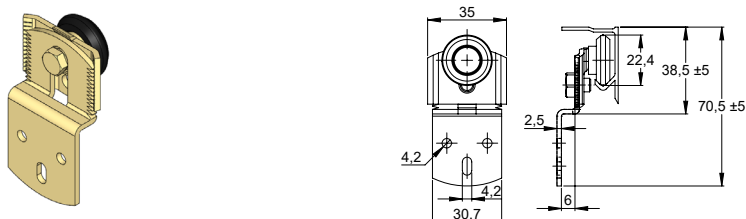
Panel weight up to 30Kg per set of wheel hangers.



Adjustable wardrobe wheel hanger (1 wheel)

Type 02.R25

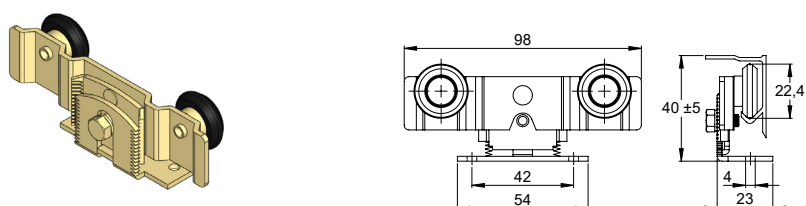
Panel weight up to 20Kg per set of wheel hangers.



Adjustable wardrobe wheel hanger (2 wheels)

Type 02.R29

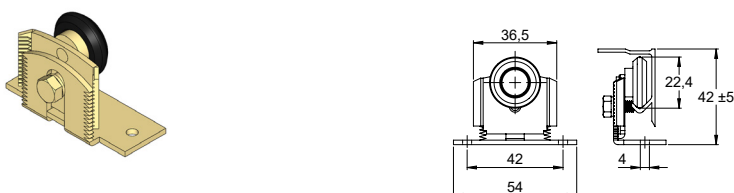
Panel weight up to 30Kg per set of wheel hangers.



Adjustable wardrobe wheel hanger (1 wheel)

Type 02.R28

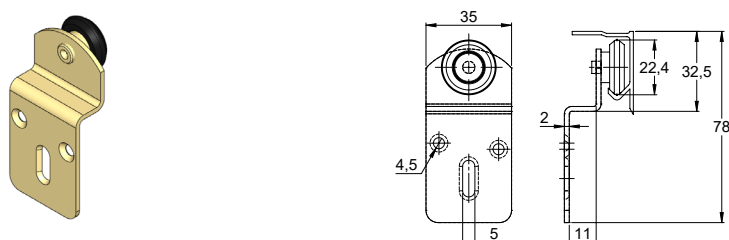
Panel weight up to 20Kg per set of wheel hangers.



Wardrobe wheel hanger (1 wheel)

Type 01.R25

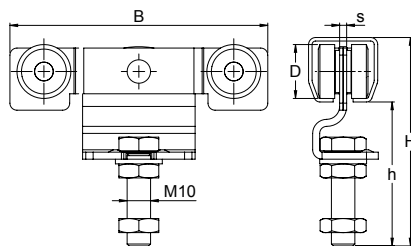
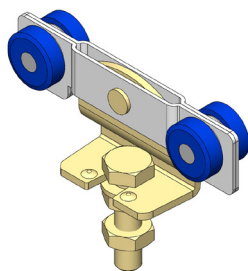
Panel weight up to 20Kg per set of wheel hangers.



Wheel hanger for sliding door without bracket

Type 12./21.R00

Panel weight up to 45Kg / 75Kg per set of wheel hangers.

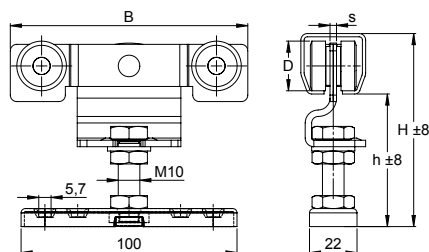
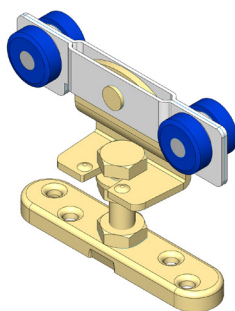


NIKO Profile No.	12.000	21.000
Part No.	12.R00	21.R00
Dimension B (mm)	110	110
Dimension D (mm)	20	23
Dimension s (mm)	2.5	3
Dimension h (mm)	57	61
Dimension H (mm)	81	89

Wheel hanger for sliding door with bracket

Type 12./21.R01

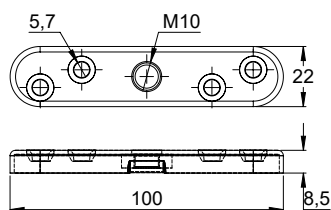
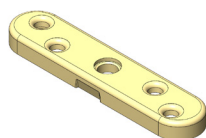
Panel weight up to 45Kg / 75Kg per set of wheel hangers.



NIKO Profile No.	12.000	21.000
Part No.	12.R01	21.R01
Dimension B (mm)	110	110
Dimension D (mm)	20	23
Dimension s (mm)	2.5	3
Dimension h (mm)	49	53
Dimension H (mm)	73	81

Bracket

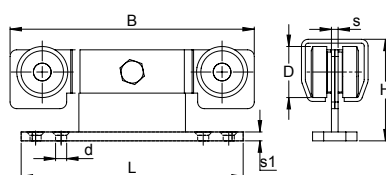
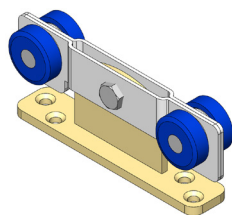
Type 21.F00



Wheel hanger for sliding door with fixed plate

Type 12./21.R05

Panel weight up to 45Kg / 75Kg per set of wheel hangers.

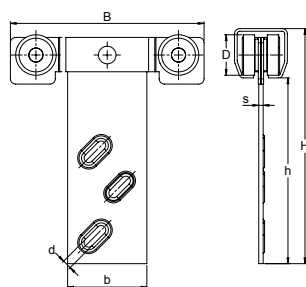
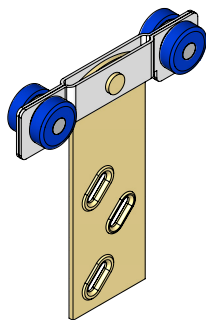


NIKO Profile No.	12.000	21.000
Part No.	12.R05	21.R05
Dimension B (mm)	110	110
Dimension L (mm)	100	100
Dimension D (mm)	20	23
Dimension s (mm)	3	3
Dimension s1 (mm)	4	4
Dimension H (mm)	43.5	45.5
Dimension d (mm)	5	5

Wheel hanger for sliding door with straight bracket

Type 12./21.R03

Panel weight up to 45Kg / 75Kg per set of wheel hangers.

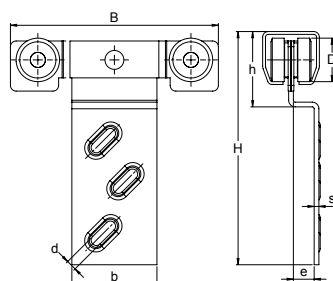
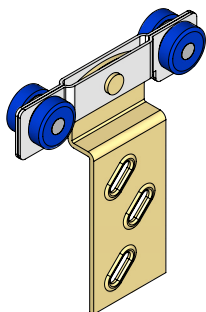


NIKO Profile No.	12.000	21.000
Part No.	12.R03	21.R03
Dimension B (mm)	110	110
Dimension D (mm)	20	23
Dimension d (mm)	5.2	5.2
Dimension b (mm)	45	45
Dimension s (mm)	2.5	2.5
Dimension h (mm)	107	105.5
Dimension H (mm)	131	133.5

Wheel hanger for sliding door with corner bracket

Type 12./21.R04

Panel weight up to 45Kg / 75Kg per set of wheel hangers.



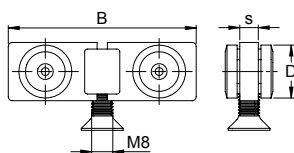
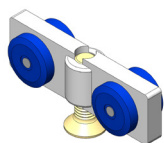
NIKO Profile No.	12.000	21.000
Part No.	12.R04	21.R04
Dimension B (mm)	110	110
Dimension D (mm)	20	23
Dimension d (mm)	5.5	5.5
Dimension b (mm)	45	45
Dimension s (mm)	2.5	2.5
Dimension e (mm)	11	11
Dimension h (mm)	37.5	40
Dimension H (mm)	121	123.5

Light duty
sliding door fittings

Wheel hanger with nylon body for sliding door

Type 03./07.R46

Panel weight up to 60Kg / 75Kg per set of wheel hangers.

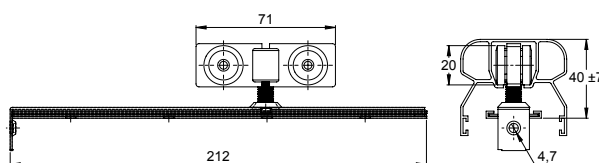
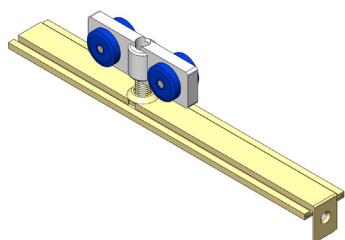


NIKO Profile No.	03.000	07.000
Part No.	03.R46	07.R46
Dimension B (mm)	71	71
Dimension D (mm)	20	23
Dimension s (mm)	7	7

Wheel hanger with nylon body and complete plate bracket

Type 03.R45

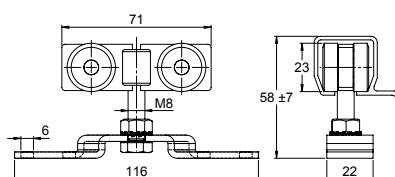
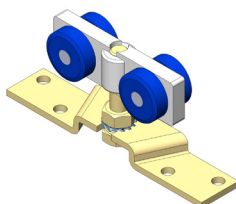
Panel weight up to 60Kg per set of wheel hangers.



Wheel hanger with nylon body and suspension bracket

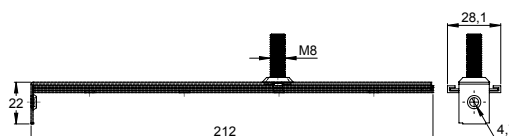
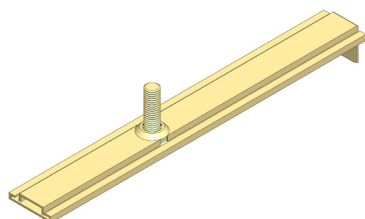
Type 07.R45

Panel weight up to 75Kg per set of wheel hangers.



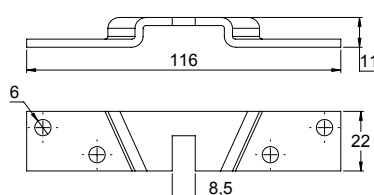
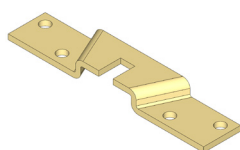
Complete plate bracket & screw

Type 03.F46



Suspension bracket

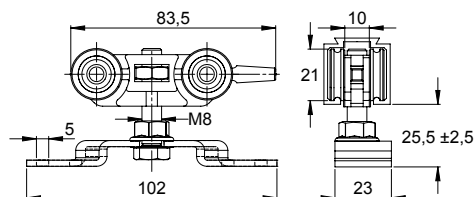
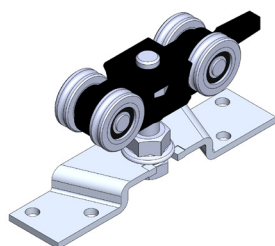
Type 07.F45



Wheel hanger with bracket

Type 80.R01

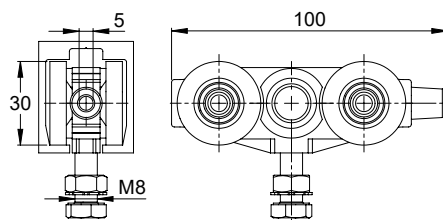
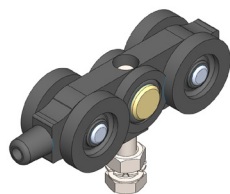
Panel weight up to 80Kg per set of wheel hangers.



Wheel hanger without bracket

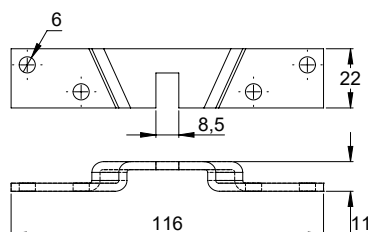
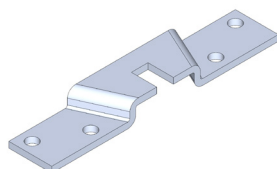
Type 84.R00

Panel weight up to 125Kg per set of wheel hangers.



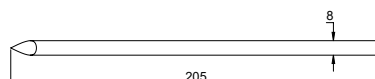
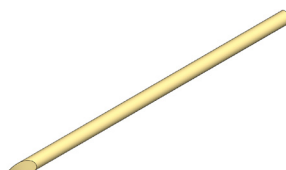
Bracket

Type 84.030



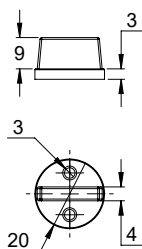
Track nail

Type 03.X06



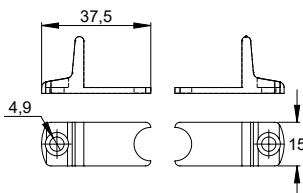
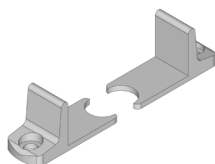
Guide nylon piece

Type 38.U04



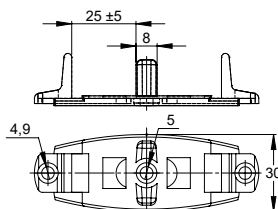
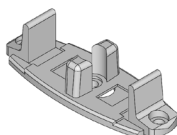
Panel guide, pair (nylon)

Type 38.U07



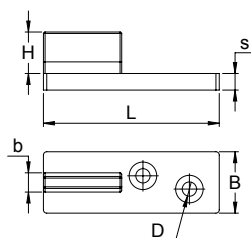
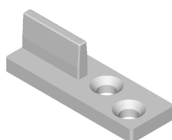
Double panel guide (nylon)

Type 38.U08



Guide nylon piece

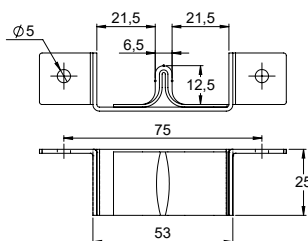
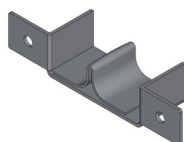
Type 38.U14/.U15



NIKO Profile No.	38.000	38.000
Part No.	38.U14	38.U15
Dimension H (mm)	12,5	17,5
Dimension L (mm)	53	54
Dimension s (mm)	4,8	5
Dimension b (mm)	5,8	5,8
Dimension D (mm)	4,5	5,8
Dimension B (mm)	18,5	24,5

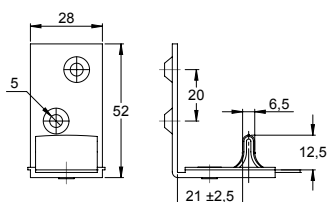
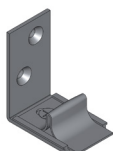
Guide piece for pocket door (inside wall) panel

Type 38.U45



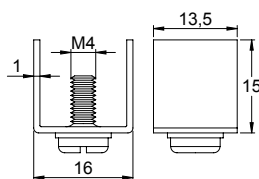
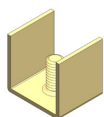
Guide piece for outside-wall panel

Type 38.U40



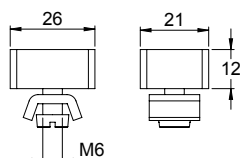
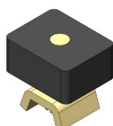
Track end stop

Type 11.X01

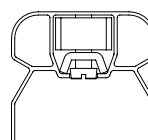


Track end stop

Type 03.X01

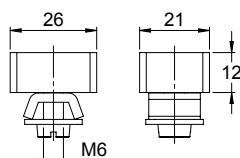
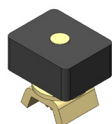


Example

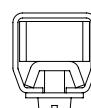


Track end stop

Type 12.X01

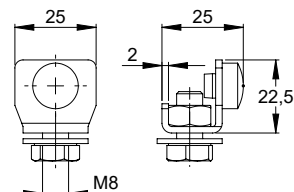
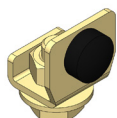


Example



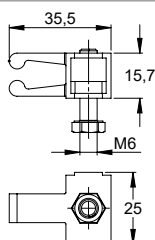
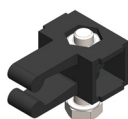
Track end stop

Type 21.X04



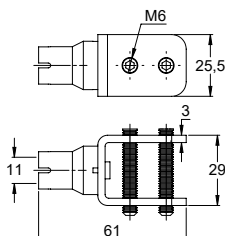
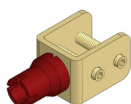
Capturing end stop

Type 80.X01



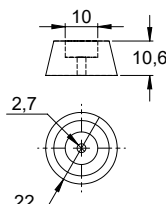
Capturing end stop

Type 84.X01



Panel end stop

Type 03.X02





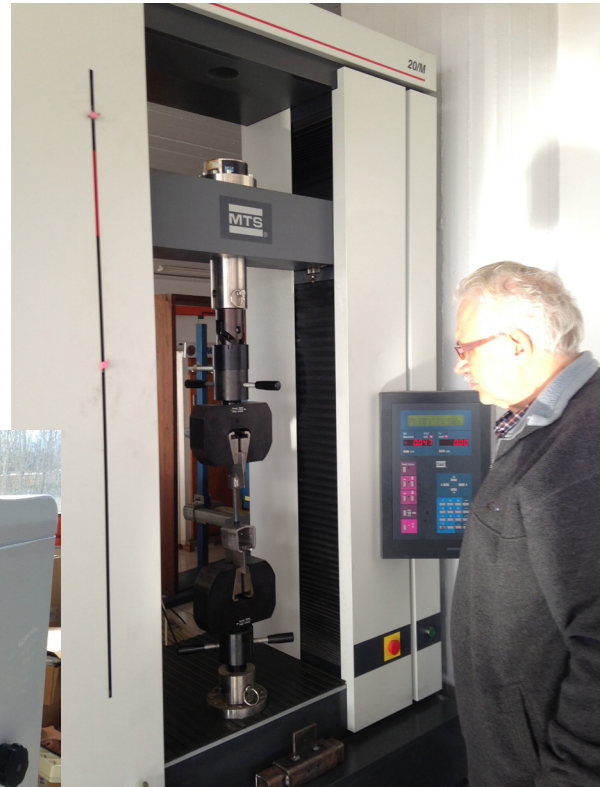
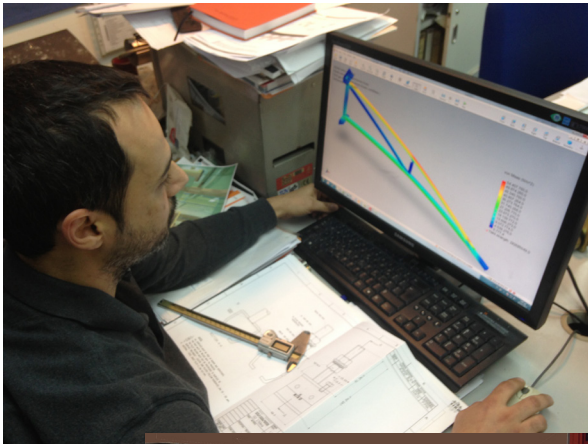
28

NOTES

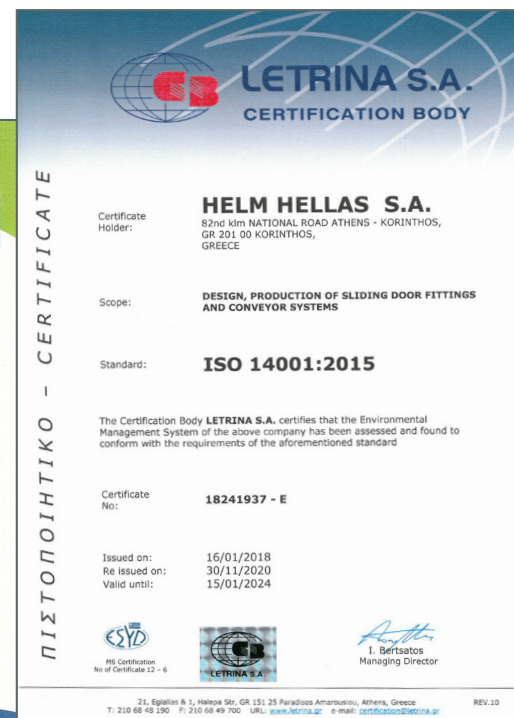


30

Our quality control department is manned with experienced and highly skilled engineers. Our test lab is equipped with endurance test stands, tensile stress equipment, hardness test machines and other laboratory equipment. Virtual stress analysis is also performed during the developing phase of every component.



Light duty
sliding door fittings



Light duty sliding door fittings

We reserve the right for technical amendments without obligation.
The product pictures and drawings depicted in this catalogue do not always reflect all available sizes.



AUSTRIA-
NIKO Vertriebs GmbH
Hainfelder Straße 48
A – 2560 Berndorf
Tel. 0043 (0) 2672 21201
Fax 0043 (0) 2672-21201-13
office.at@niko.eu.com
www.niko.world

POLAND-
NIKO Polska
Skrzynno 192a
Ostrowek 98-311
Tel. +48 504 003 556
info.pl@niko.eu.com
www.niko.world

GREECE-
Helm Hellas S.A.
82nd Km Athens-Korinthos
P.O. Box 209
GR - 201 00 KORINTHOS
Tel. 0030 27410 76800
Fax 0030 27410 25368
info@niko.eu.com
www.niko.eu.com

NIKO Conveyors
597 Middle Street
Bristol, CT 06010
Tel. 001 860-845-8179
info@NIKOconveyors.com
www.nikoconveyors.com

NikoTrack/NIKO US
9 Stockholm St,
Newport RI 02840
C: 401-835-8640
Alex.Koza@niko.eu.com
alex@nikotrack.com
www.nikotrack.com

CANADA -
NIKO Crane Canada
615, rue du Nickel
Québec (Québec) G2N 0J9
Tel. 418 841.2287
info@smakdesign.ca
www.smakmanutention.com

UNITED KINGDOM-
NIKO Ltd
Airfield Park Business Park
Welsh Road East, Southam
Warwickshire, CV47 1NE
Tel. 0044 (0) 1926 813111
Fax 0044 (0) 1926 815599
Sales@niko.co.uk
www.niko.co.uk

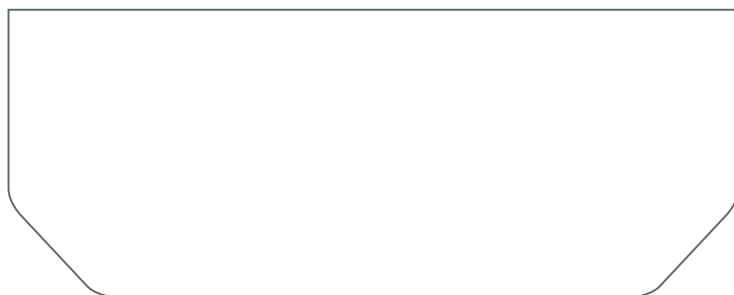
USA Light Crane Systems-
NIKORAIL
8000 Joliet Rd.
McCook, IL 60525
Toll Free 888.352.1213
Tel. 001 708-352-1213
sales@hsicrane.com
www.nikorail.com

GERMANY-
NIKO Technik GmbH
Robert-Bosch-Str. 14
DE – 42489 Wülfrath
Tel. 0049 (0) 2058 9093603
Fax 0049 (0) 2058 9093604
office.de@niko.eu.com
www.niko.world

CHINA-
NIKO TRADING (SHANGHAI) Co., Ltd
Room 901-156, No.18
Tianshan Road, Changning District,
P.R.China - 201802 Shanghai
Tel. 0086 134 2785 9785
info.cn@niko.eu.com

www.niko.eu.com

Your **NIKO** agent will be happy to advise you:



Complete product range **NIKO**:

- Light duty sliding door hardware
- Heavy duty sliding door hardware
- Conveyor systems
- Light cranes
- Cable trolleys, festoon systems & conductor bars
- Personal fall arrest systems (EN 795)
- Accessories for gates and doors