



Light duty sliding door fittings

We reserve the right for technical amendments without obligation.
The product pictures and drawings depicted in this catalogue
do not always reflect all available sizes.

Application Photos



Light duty sliding door fittings
We reserve the right for technical amendments without obligation.
The product pictures and drawings depicted in this catalogue
do not always reflect all available sizes.

Ver. November 2018



Contents

Sliding door kit applications	Page	6-11
Steel track profiles & bends	Page	12
Aluminium track profiles	Page	13-14
Support brackets & joints	Page	15-17
Wheel hangers & brackets for wheel hangers	Page	18-25
Guide pieces	Page	26
End stops	Page	27
Notes	Page	28-30

Application examples - Sliding door assemblies





The components set 03.900 includes :

No.	Quantity (pcs)	Description		Page
1	2	Wheel hanger with nylon body and complete plate bracket	03.F45	24
2	1	Guide piece for outside-wall panel	38.U40	26
3	1	Panel end stop	03.X02	27
4	1	Plastic track cap	03.X05	17
5	2	Track end stop	03.X01	27

Application examples - Sliding door assemblies



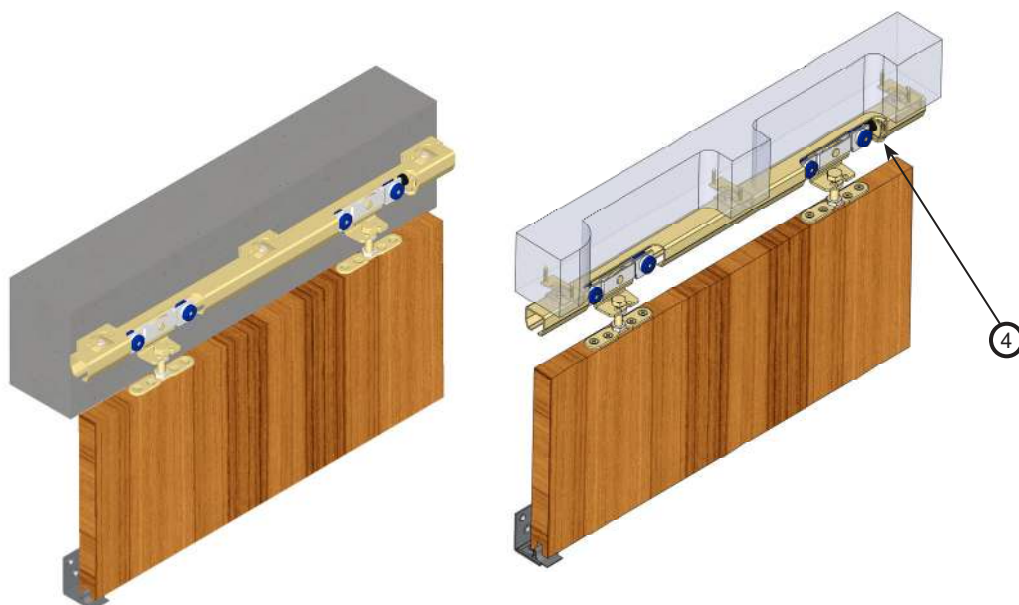
SLIDING DOOR KIT NIKO SERIES 07.
(with aluminium track)
KIT for panel weight up to 75 Kg

No.	Quantity (pcs)	Description		Page
1	2	Wheel hanger for sliding door with bracket [07.900]	21.R01	22
1	2	Wheel hanger with nylon body and suspension bracket [07.910]	07.R45	24
2	1	Guide piece for outside-wall panel	38.U40	26
3	2	Track end stop	21.X04	27
4	1	Panel end stop	03.X02	27

No.	Quantity (pcs)	Description		Page

The components set 12.900 includes :

No.	Quantity (pcs)	Description		Page
1	2	Wheel hanger for sliding door with bracket	12.R01	22
2	1	Panel end stop	03.X02	27
3	1	Guide nylon piece	38.U14	26
4	2	Track end stop	12.X01	27



No.	Quantity (pcs)	Description		Page
1	2	Quantity		

No.	Quantity (pcs)	Description		Page
1	2	Wheel hanger	84.F00	25
1	2	Bracket	84.030	25
2	1	Guide nylon piece	38.U14	26
3	2	Capturing end stop	84.X01	27
4	1	Panel end stop	03.X02	27

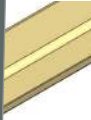
Light duty sliding door fittings

We reserve the right for technical amendments without obligation.
The product pictures and drawings depicted in this catalogue
do not always reflect all available sizes.

profiles & bends

black zinc plated

Type .000



black zinc plated

Type .002



black zinc plated with dual rolling bracket

Type .004

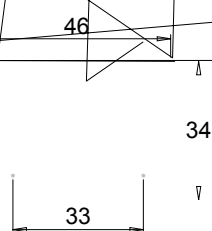
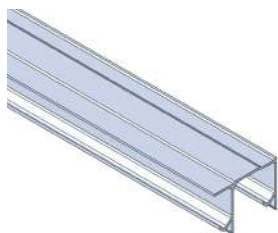


Aluminium track profiles



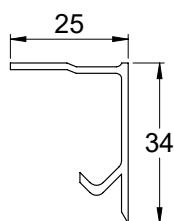
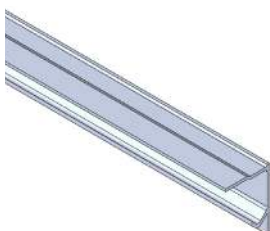
Twin track (for wardrobes)

Type 01.060



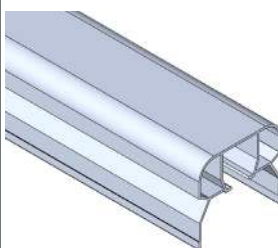
Single track (for wardrobes)

Type 01.050



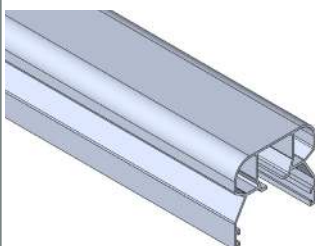
Single track

Type 03.050



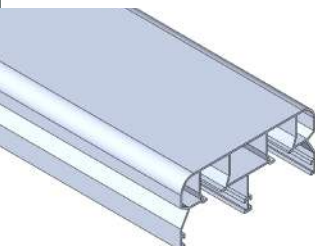
Single track with slot for brush insulator

Type 04.050



Twin track with slot for brush insulator

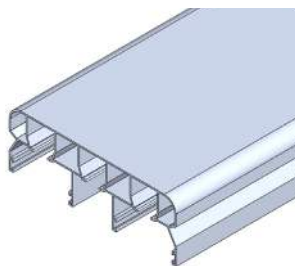
Type 04.060



Light duty
sliding door fittings

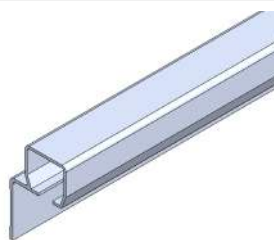
Triple track with slot for brush insulator

Type 04.070



Sliding panel track

Type 07.050



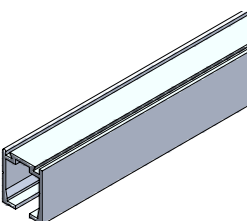
Single aluminium track

Type 80.000



Single aluminium track

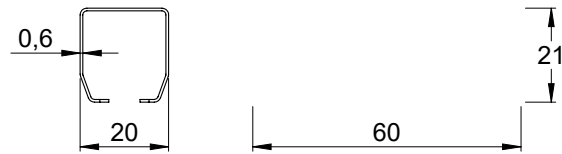
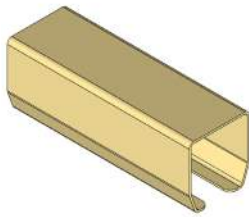
Type 84.000





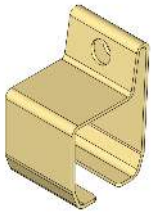
Splice joint (clip)

Type 11.B49



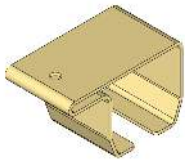
Wall support bracket (clip)

Type 11.B01



Ceiling support bracket (clip)

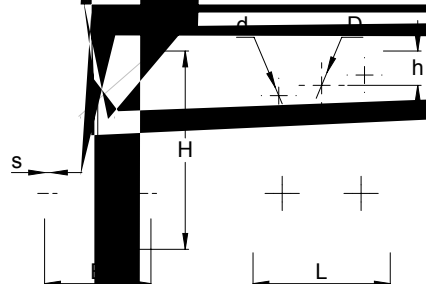
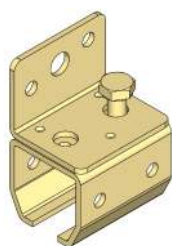
Type 11.B02



Support brackets

Wall support bracket

Type 12./ 21.B01



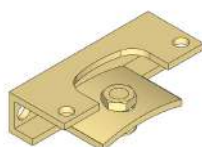
Ceiling support bracket

Type 12./ 21.B02



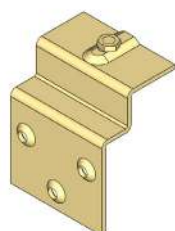
Ceiling-wall bracket for drilled track

Type 12.B41

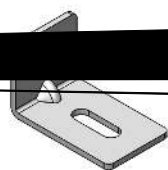


Wall bracket for drilled track

Type 12.B42



Wall bracket for drilled track



40

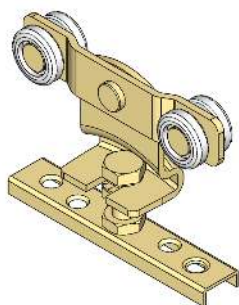
25

6

12

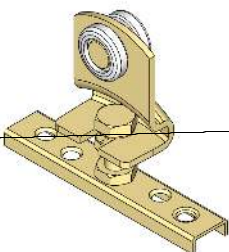
Wheel hanger with screw xing bracket (4 wheels)

Type 11.R01



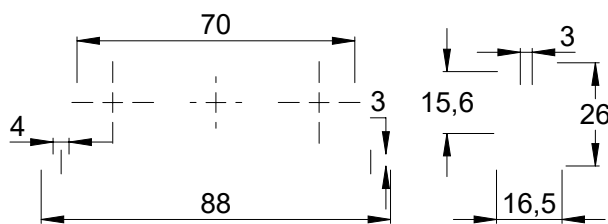
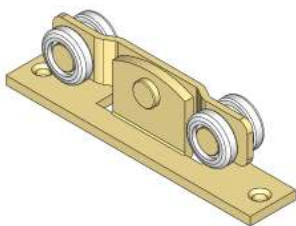
Wheel hanger with screw xing bracket (2 wheels)

Type 11.R10



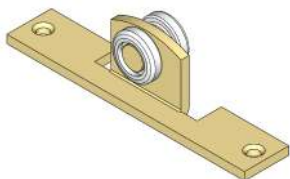
Wheel hanger with xed bracket (4 wheels)

Type 11.R05



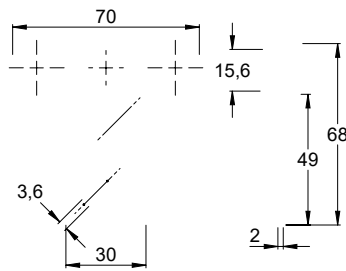
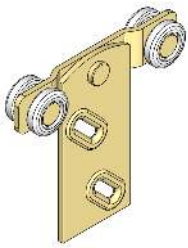
Wheel hanger with xed bracket (2 wheels)

Type 11.R15



Wheel hanger with straight bracket (4 wheels)

Type 11.R03



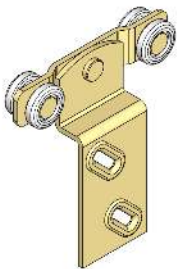
Wheel hanger with straight bracket (2 wheels)

Type 11.R13



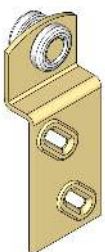
Wheel hanger with corner bracket (4 wheels)

Type 11.R04



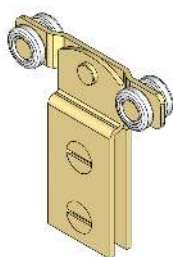
Wheel hanger with corner bracket (2 wheels)

Type 11.R14



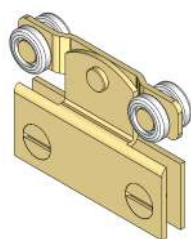
Wheel hanger for sliding glass

Type 11.R40



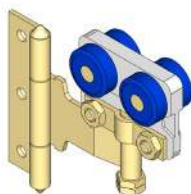
Wheel hanger for sliding glass

Type 11.R41



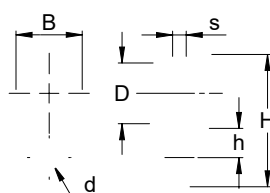
Wheel hanger for folding wardrobe panels

Type 12.R43



Wheel hanger for curtains

Type 11./ 12.R31



Leading wheel hanger for curtains

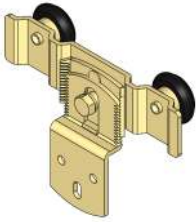
Type 11./ 12.R32





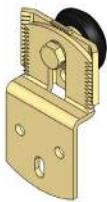
Adjustable wardrobe wheel hanger (2 wheels)

Type 02.R26



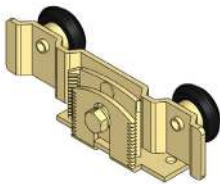
Adjustable wardrobe wheel hanger (1 wheel)

Type 02.R25



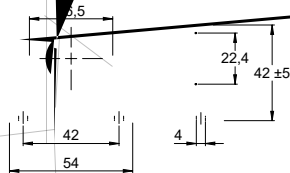
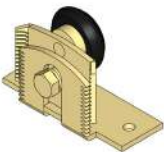
Adjustable wardrobe wheel hanger (2 wheels)

Type 02.R29



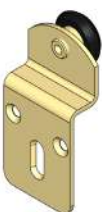
Adjustable wardrobe wheel hanger (1 wheel)

Type 02.R28



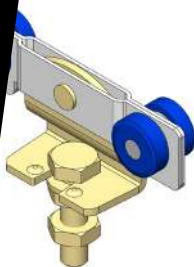
Wardrobe wheel hanger (1 wheel)

Type 01.R25



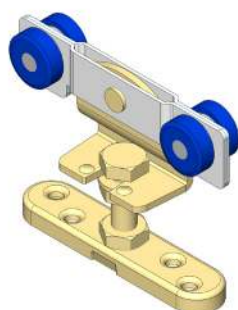
Wheel hanger for sliding door without bracket

Type 12./ 21.R00



Wheel hanger for sliding door with bracket

Type 12./ 21.R01



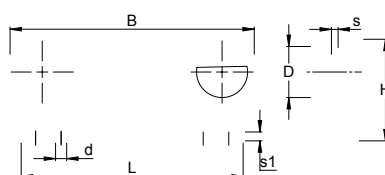
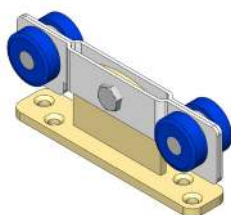
Bracket

Type 21.F00



Wheel hanger for sliding door with fixed plate

Type 12./ 21.R05



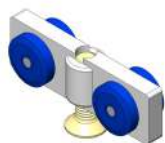


Type 12./ 21.R04

Light duty
sliding door fittings

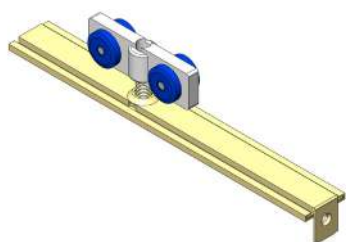
Wheel hanger with nylon body for sliding door

Type 03./ 07.R46



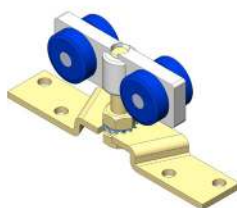
Wheel hanger with nylon body and complete plate bracket

Type 03.R45



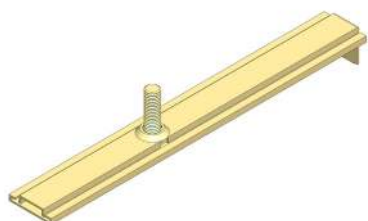
Wheel hanger with nylon body and suspension bracket

Type 07.R45



Complete plate bracket & screw

Type 03.F46



Suspension bracket

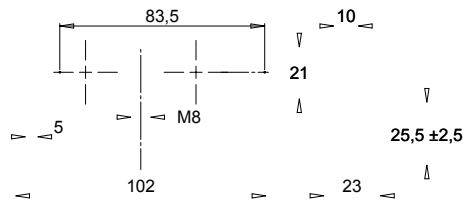
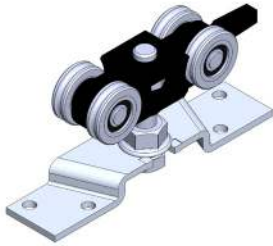
Type 07.F45





Wheel hanger with bracket

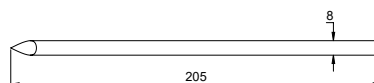
Type 80.R01



Light duty
sliding door fittings

Track nail

Type 03.X06



Light duty sliding door fittings

We reserve the right for technical amendments without obligation.
The product pictures and drawings depicted in this catalogue
do not always reflect all available sizes.

Ver. November 2018

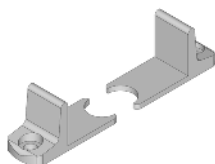
Guide nylon piece

Type 38.U04



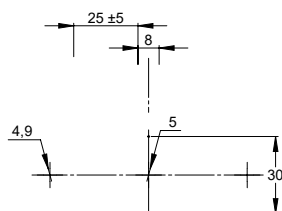
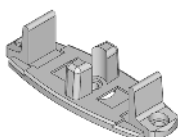
Panel guide, pair (nylon)

Type 38.U07



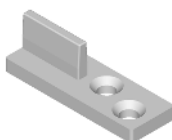
Double panel guide (nylon)

Type 38.U08



Guide nylon piece

Type 38.U14/ .U15



Guide piece for pocket door (inside wall) panel

Type 38.U45



Guide piece for outside-wall panel

Type 38.U40





Track end stop

Type 11.X01



Track end stop

Type 03.X01



Track end stop

Type 12.X01



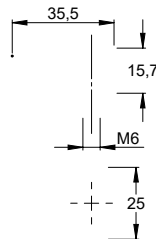
Track end stop

Type 21.X04



Capturing end stop

Type 80.X01



Capturing end stop

Type 84.X01



Panel end stop

Type 03.X02



NOTES

Light duty sliding door fittings



NOTES

[illegible]

Light duty
sliding door fittings

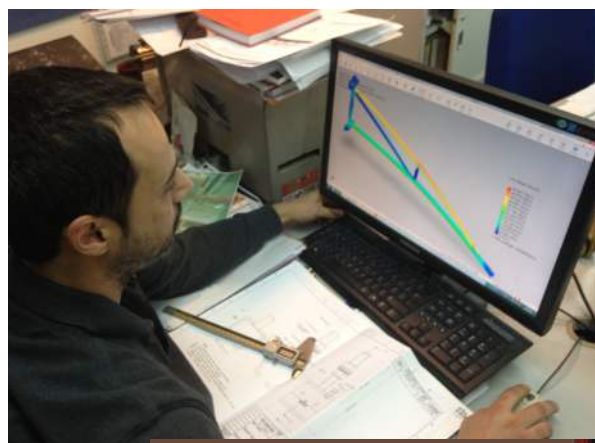
NOTES

Light duty sliding door fittings

This image shows a single sheet of white paper with horizontal ruling lines. The lines are evenly spaced and run across the width of the page. There are no margins, text, or other markings on the paper.



Our quality control department is manned with experienced and highly skilled engineers. Our test lab is equipped with endurance test stands, tensile stress equipment, hardness test machines and other laboratory equipment. Virtual stress analysis is also performed during the developing phase of every component.



Light duty
sliding door fittings



Light duty sliding door fittings

We reserve the right for technical amendments without obligation.
The product pictures and drawings depicted in this catalogue
do not always reflect all available sizes.

Ver. November 2018



www.niko.eu.com