

D

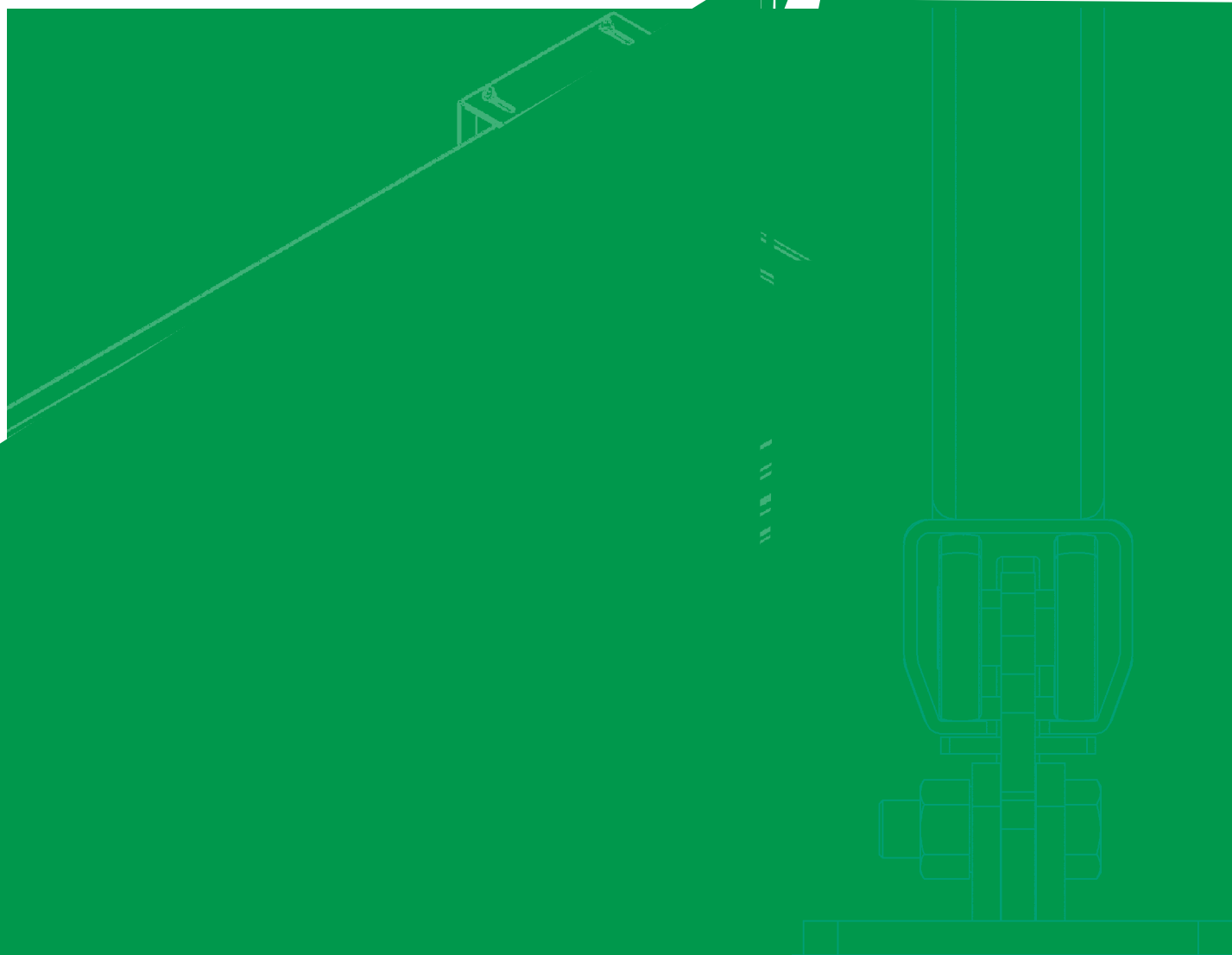
# Accessories for Gates and Doors

Product catalog

Hardware for sliding doors and gates



*NIKO ...Quality in Motion*



# Global LOCATIONS & HEAD OFFICE









# Contents

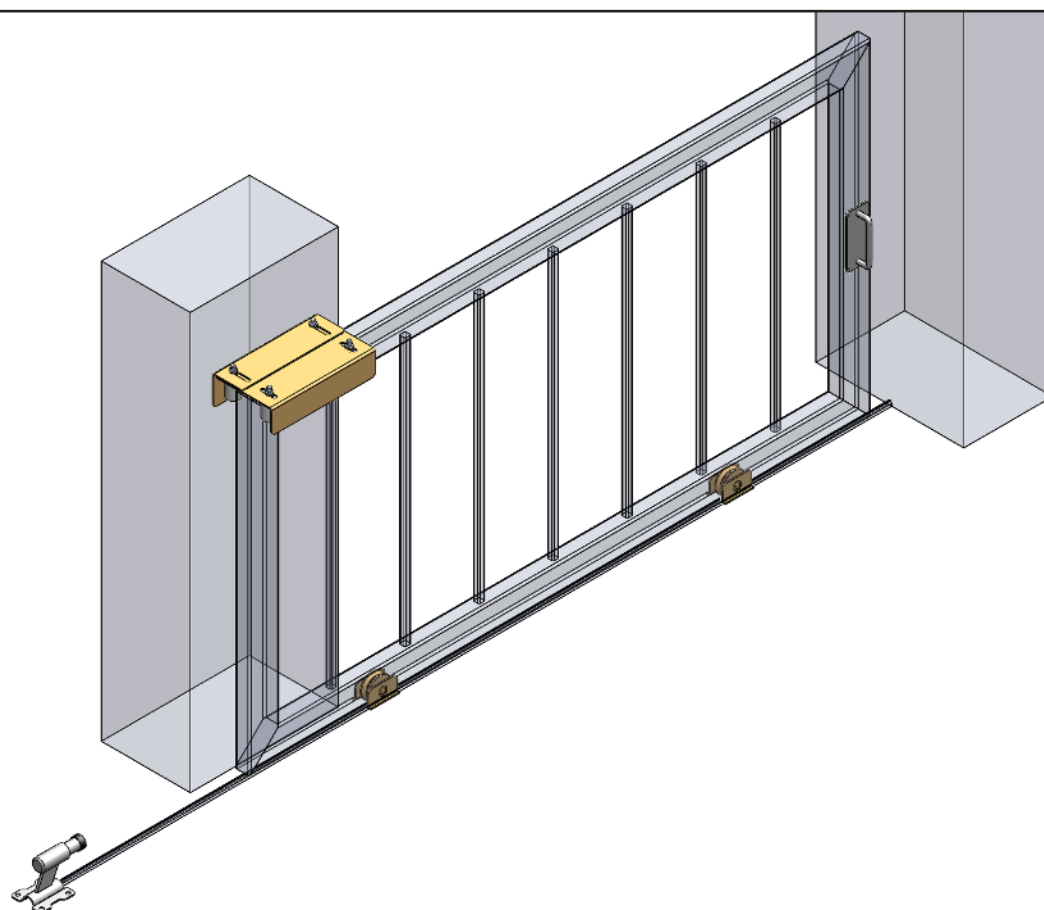
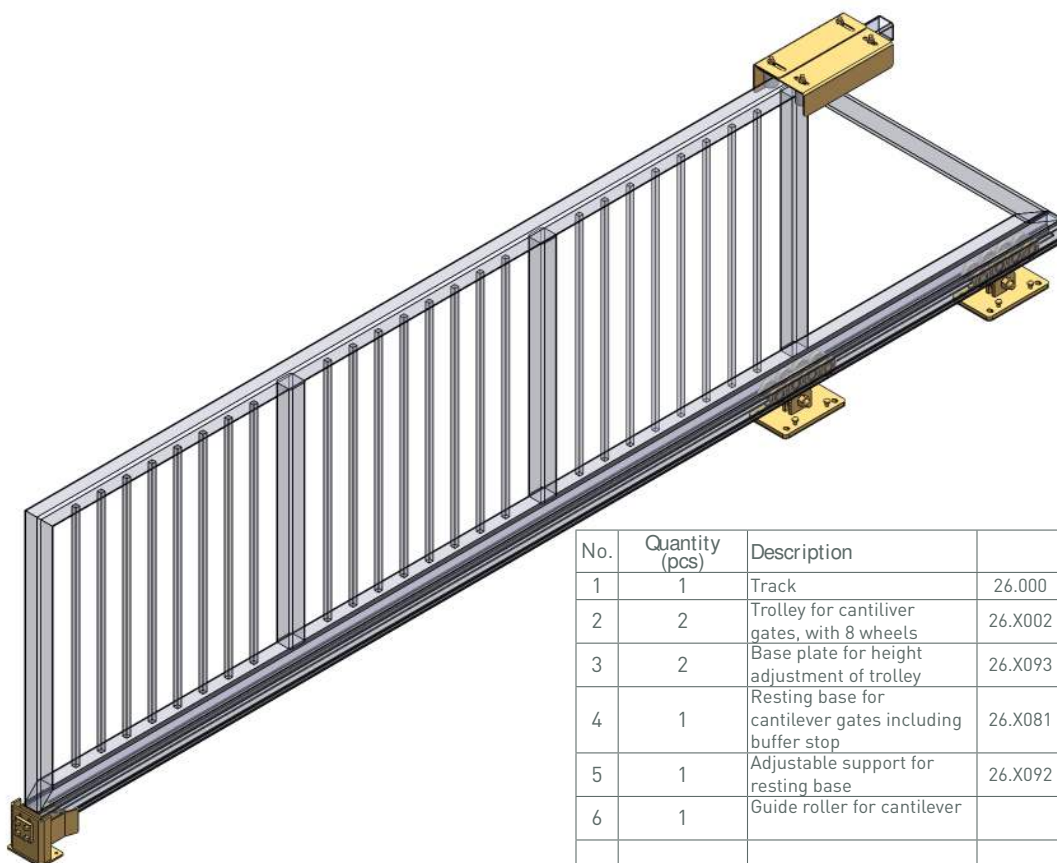
Introduction - Application examples	Page	6-10
Component specifications	Page	11-41
Track profiles	Page	11
Cantilever fittings	Page	12-14
Guides	Page	15-18
Door latches	Page	19
Double acting door hinges	Page	20
Locking latches for folding doors	Page	21
Catch lock and door buffer with spring	Page	22
Spring door holders	Page	23
Gate hinges, stainless steel	Page	24-25
Gate hinges, steel / gate latches	Page	26-29







## Application examples

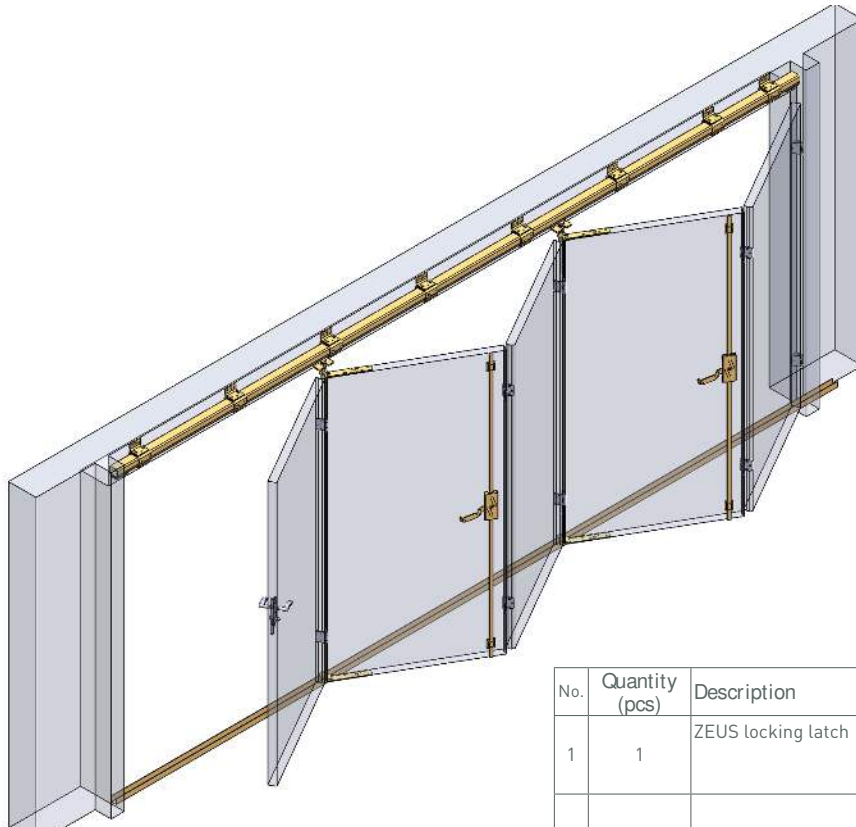




## Application examples

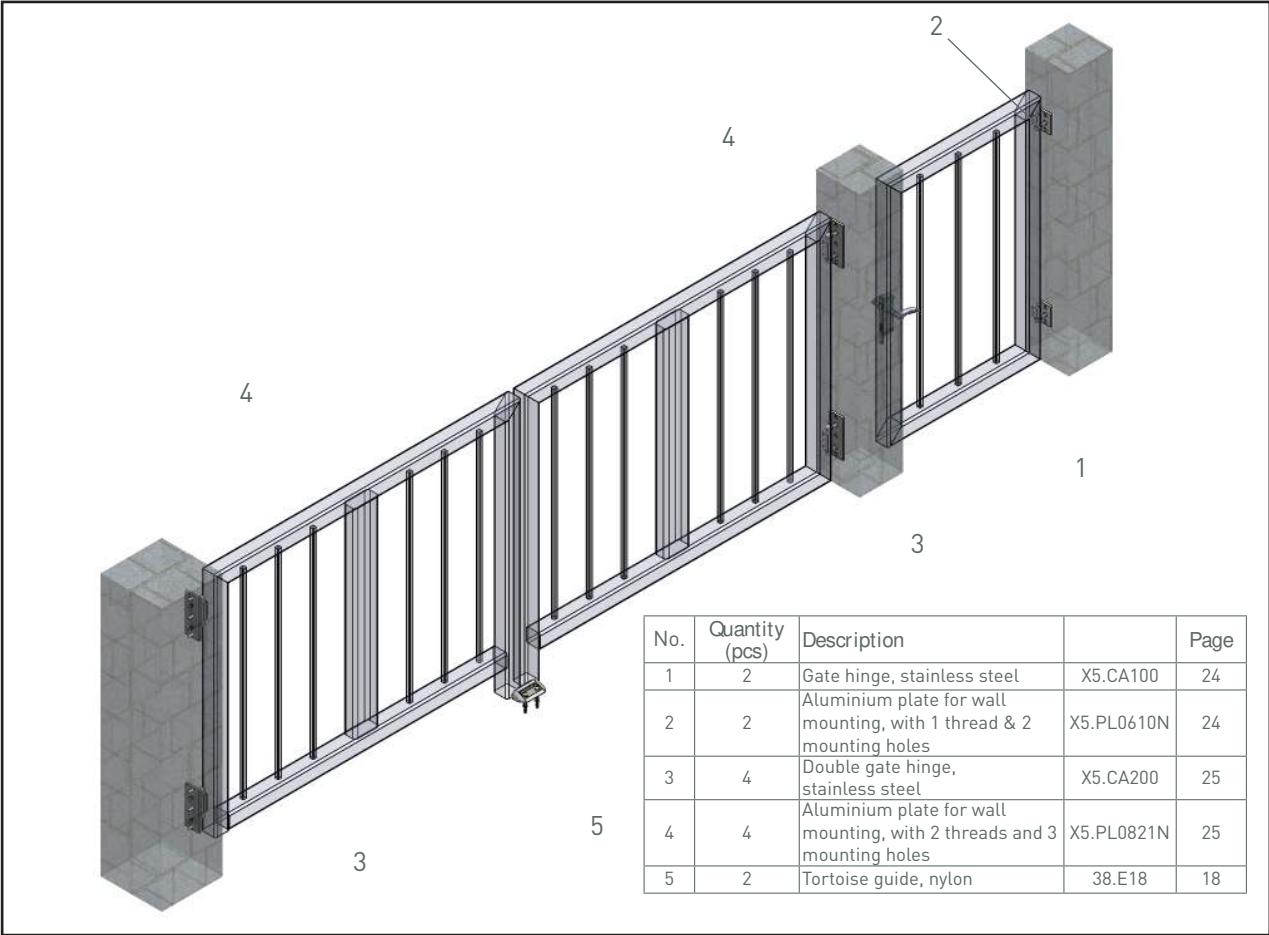


No.	Quantity (pcs)	Description		Page
1	1	ZEUS door latch TTR type	TTR.10	19
2	1	Square rod for TTR door latches	T.2062	19
3	2	Rod guide	T.2036	19



No.	Quantity (pcs)	Description		Page
1	1	ZEUS locking latch		

# Application examples





# Component Specifications

## NIKO Track profiles

Surface steel plain or zinc plated.  
Steel Type S235JR according to  
EN10025. The profile 25.000 is also  
available in stainless steel.

NIKO Profil No.	Dimensions			
	h (mm)	b (mm)	d (mm)	s (mm)
25.000	60,00	65,00	18,00	3,60
25.050 Stainless steel (304/A2)	60,00	65,00	18,00	3,60
26.000	75,00	80,00	22,00	4,50
27.000	110,00	90,00	25,00	6,50

## Trolley for cantilever gates, with 8 wheels



NIKO Profile No.	25.000	26.000	27.000
Part No.	25.X002	26.X002	27.X002
Dimension B (mm)	170	240	330
Dimension H (mm)	144	151	207
Dimension b (mm)	110	150	180
Dimension h (mm)	84	76	97



NIKO Profile No.	25.000	26.000
Part No.	25.X012	26.X012
Dimension B (mm)	170	240
Dimension H (mm)	122	155
Dimension b (mm)	110	150
Dimension h (mm)	62	80

Base plate for height adjustment of trolley

Type .X093



Zinc plated plate for trolleys Type .X002/.X012, including 4 adjustment screws.

Accessories for  
Gates and Doors

NIKO Profile No.	25.000	26.000	27.000
Part No.	25.X093	26.X093	27.X093
Dimension B (mm)	170	240	330
Dimension b (mm)	110	150	180
Dimension s (mm)	3	3	3

Resting base

Type .X081

For cantilever gates including buffer stop.

NIKO Profile No.	25.000	26.000	27.000
Part No.	25.X081	26.X081	27.X081
Dimension B Tm0Dim081			

## Adjustable support for resting base



NIKO Profile No.	25.000	26.000	27.000
Part No.	25.X092	26.X092	27.X092
Dimension B (mm)	110	135	155
Dimension H (mm)	140	150	150
Dimension L (mm)	85	85	85
Dimension h (mm)	85	90	90
Dimension l (mm)	35	45	45

NIKO Profile No.	25.000	26.000	27.000
Part No.	25.X091	26.X091	27.X091
Dimension B (mm)	100	120	135
Dimension H (mm)	60	75	110



Top guide

Type .X094



Top guide for series 25.000/26.000/27.000, with two or four plastic rollers for adjustment. Available zinc plated.

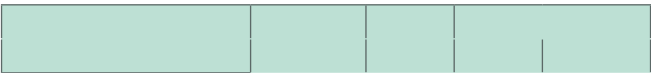
Accessories for  
Gates and Doors

NIKO Profile No.	25.000	26.000	27.000
Part No.	25.X094	26.X094	27.X094
Dimension B (mm)	100	350	350
Dimension H (mm)	190	min 180 - max 220	min 175 - max 215
Dimension L (mm)	min 45 - max 85	min 30 - max 85	min 80 - max 120
Dimension h (mm)	80	80	80

Guide fork

Type .X095

For upper entry guidance with nylon rollers d=50mm.



## Nylon wedge guide

Type .E54/55

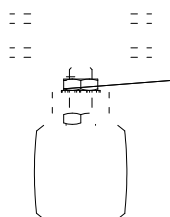
Nylon wedge guide for upper entry guidance of sliding gates.

NIKO Part No.	38.E54	38.E55
Dimension B (mm)	30	40
Dimension H (mm)	20	24
Dimension L (mm)	110	120
Dimension D (mm)	6,5	6,8

## Guide roller with screw

Type .X69

Guide top nylon roller with screw connection.



NIKO Art No.	38.X70
Dimension B (mm)	75
Dimension H (mm)	130
Dimension L(mm)	155
Dimension D (mm)	50
Dimension h (mm)	80
Dimension l max (mm)	60
Dimension d (mm)	17
Dimension h1 (mm)	20

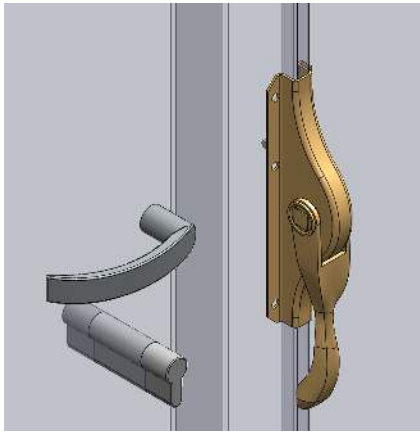




# ZEUS Door latch

Zinc plated with base plate and rod guides.

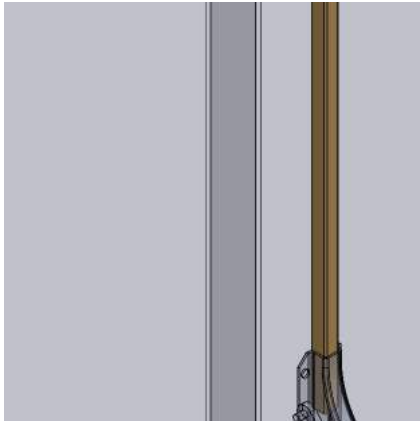
Type TTR



NIKO Part No.	TTR.08	TTR.10	TTR.12	TTR.14	TTR.16
	incl. 2 rod guides			incl. 4 rod guides	
Dimension B (mm)	26	31	35	40	50
Dimension H (mm)	122	138	160	180	225
Dimension L (mm)	33	40	40	50	60

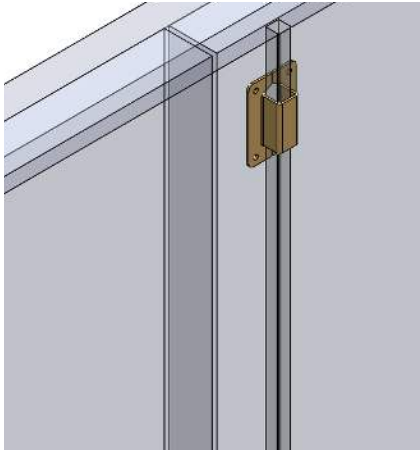
## Square rods for TTR door latches

For door latch, zinc plated



## Rod guides

Loose for door latch.



### Assembly

Remove tension rivets, engage tabs and tighten. The spindles must align exactly. Wedge the door and tighten the spring with latching bolt. Insert the tension rivets.

### Assembly tips

At strong frequented or heavily used doors a third hinge should be installed in the upper third part of the door. No warranty is covered at overloading or assembly faults!

Double acting door hinges should generally be screwed on. These door hinges are not suitable for welding.



## Springs for replacement

For ZEUS double acting door hinge.

NIKO Part No.	X5.L29	X5.L30	X5.L33	X5.L36	X5.L39	X5.L42
Dimension D (mm)	17	18	18	22	26	28
Dimension L (mm)	49	57	73	91	113	132



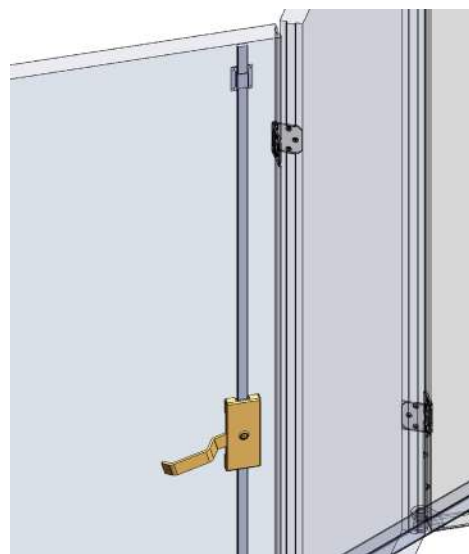
## ZEUS Locking latch for folding doors

For use left and right, for light and heavy door panels.

Type FTTR



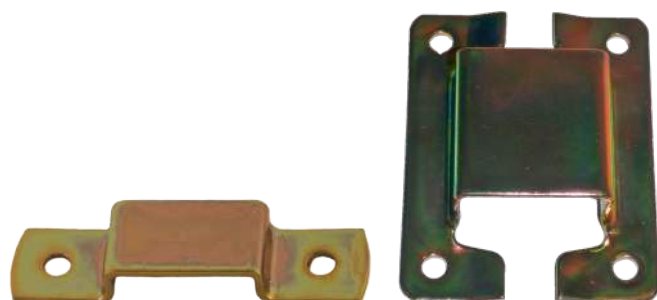
Accessories for  
Gates and Doors



NIKO Part No.	FTTR.160	FTTR.175
Dimension B (mm)	50	75
Dimension H (mm)	160	175
Dimension S (mm)	39	42
Dimension s (mm)	20	21

## Narrow and wide guide for locking latch

For locking latch for folding doors.



NIKO Part No.	X5.S25	X5.S30
Dimension B (mm)	25	30
Dimension H (mm)	8	8

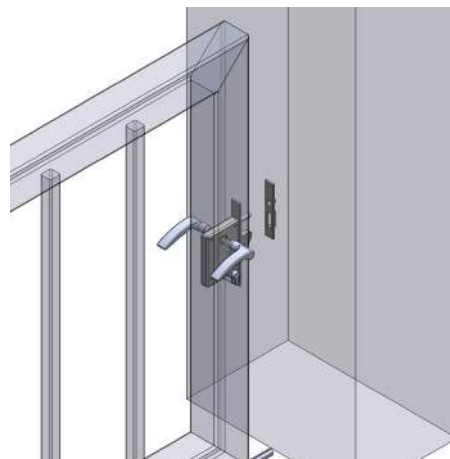


Accessories for Gates and Doors  
We reserve the right for technical amendments without obligation.  
The product pictures and drawings depicted in this catalogue do  
not always reflect all available sizes.

## Catch lock with hook

**Type .511**

Zinc plated door lock for sliding gates with lift-out safety. Heavy duty version adjusted for profile cylinder including locking plate.

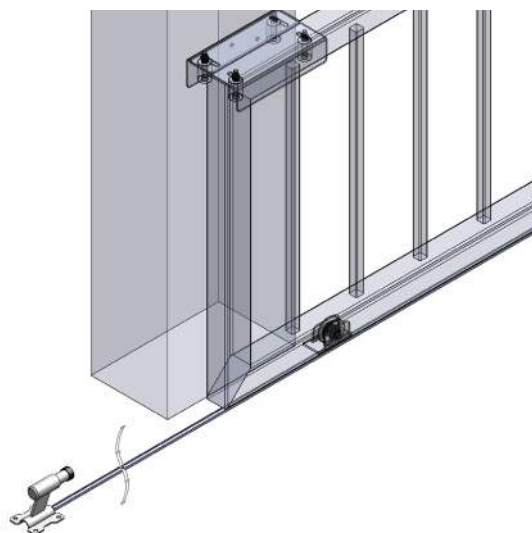


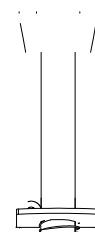
NIKO Part No.	X5.511
Dimension B (mm)	25
Dimension H (mm)	210
Dimension D (mm)	5.5
Dimension b (mm)	42
Dimension b1 (mm)	40
Dimension b2 (mm)	98
Dimension h (mm)	37
Dimension h1 (mm)	34
Dimension d (mm)	12
Dimension e (mm)	175
Dimension s (mm)	4

## Door buffer with spring

**Type .510**

Zinc plated, for cantilever or bottom-running sliding gates, with spring buffer for gates up to 400kg.

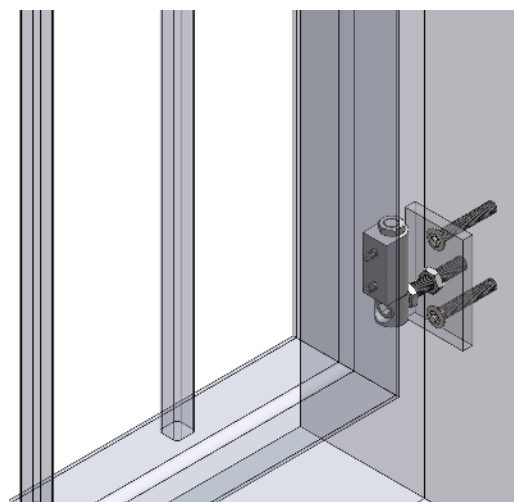




## Gate hinge, stainless steel

Type .CA100

Solid stainless steel hinge construction with 15mm mandrel. Aluminium gate part for fastening with two screws M8X20. Aluminium wall mounting plates are optional. Suitable for pedestrian doors and light duty automated gates. Suitable mounting plates PL0610 or PL1010.



NIKO Part No.	X5.CA100
Dimension B (mm)	30
Dimension H (mm)	90
Dimension L (mm)	70
Dimension D	M14
Dimension h (mm)	54
Dimension e (mm)	29
Dimension b1 (mm)	30

Double gate hinge, stainless steel

Type .CA200



Solid stainless steel hinge construction with 15mm mandrel. Aluminium gate part for fastening with three screws M8X20. Aluminium wall mounting plates are optional. Suitable for heavy duty automated gates. Suitable mounting plate PL0821.

NIKO Part No.	X5.CA200
Dimension B (mm)	30
Dimension H (mm)	135
Dimension L (mm)	70
Dimension D	M14
Dimension C (mm)	27
Dimension b (mm)	28
Dimension h (mm)	84
Dimension e (mm)	25
Dimension c (mm)	110

Aluminium plate for wall mounting with 2 threads & 3 mounting holes .PL0821

Aluminium mounting plate with holes for screw connection and threaded hole M14 for gate hinge CA200. Available finish in aluminium nature or RAL7035 powder coated.

Accessories for  
Gates and Doors


## Steel gate hinge

Type .BA10

Zinc plated steel gate hinge with adjustable nut for welding.

NIKO Part No.	X5.BA1020	X5.BA1024
Dimension G (mm)	54-68	63-81
Dimension D (mm)	30	35
Dimension F	M20	M24
Dimension I (mm)	21	25
Dimension L (mm)	60	70
Dimension H (mm)	39	47
Dimension S (mm)	6	6

## Steel gate hinge

Type .BA20

Zinc plated steel gate hinge with threaded part to build into wall.

NIKO Part No.	X5.BA2020
Dimension M (mm)	94
Dimension F	



# Steel gate hinge

Type .BA30



Zinc plated door hinge for welding, with long threaded part for screw on.

NIKO Part No.	X5.BA3020
Dimension L1 (mm)	max. 130
Dimension F	M20
Dimension L (mm)	160
Dimension G (mm)	min. 50
Dimension I (mm)	21
Dimension H (mm)	39
Dimension S (mm)	6

Accessories for  
Gates and Doors

# Steel gate hinge

Type .BA15

Zinc plated door hinge for welding, with threaded part and mounting plate to screw on.

NIKO Part No.	X5.BA1520
Dimension L (mm)	90x90
Dimension M (mm)	64x64
Dimension D (mm)	24
Dimension d (mm)	9
Dimension F	M20
Dimension G (mm)	90-7490-74Dim105.962

## Steel gate hinge

Type .BA40

Zinc plated door hinge for welding, with long threaded part for screw on. Adjustable welding plate with elongated hole for gate opening up to 180°.



## Steel gate latch

Type .TF16

Zinc plated gate latch, bayonet latch for screw on or welding.

NIKO Part No.	X5.TF16W	X5.TF16S
Dimension d (mm)	16	16
Dimension C (mm)	6-75	6-75
Dimension B (mm)	115	115
Dimension A (mm)	440	440
Dimension f (mm)	8	8
Dimension G (mm)	100	100
Dimension E (mm)	47	22
Dimension H (mm)	22,5	20
Dimension M (mm)	142	-
Dimension L (mm)	128	-
Dimension l (mm)	21	-
Dimension Sp (mm)	2,5	-



Steel gate hinge

Type .BA50WI/70W



Adjustable gate hinge with plate for welding, stainless steel (304/A2) or zinc plated.



Accessories for  
Gates and Doors

Steel gate hinge

Type .BA50S/70S

Zinc plated gate hinge with plate for screw on.

NIKO Part No.	X5.BA50S	X5.BA70S
Dimension A (mm)	82	109
Dimension B (mm)	72	94
Dimension D (mm)	50	70
Dimension E (mm)	110	143
Dimension G (mm)	50	63
Dimension H (mm)	32	40
Dimension L (mm)	65-75	75-85
Dimension M (mm)	60	85
Dimension N (mm)	50	70
Dimension S (mm)	8	10
Dimension d (mm)	9	11

e

e1ede80e

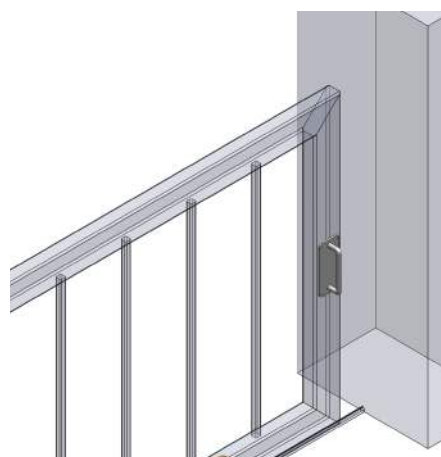


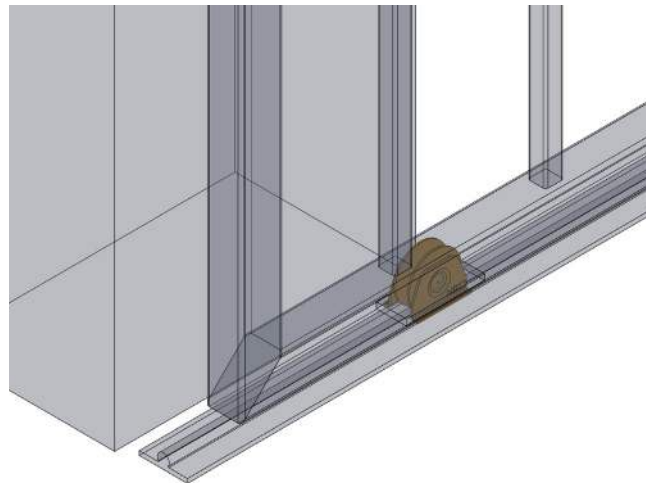
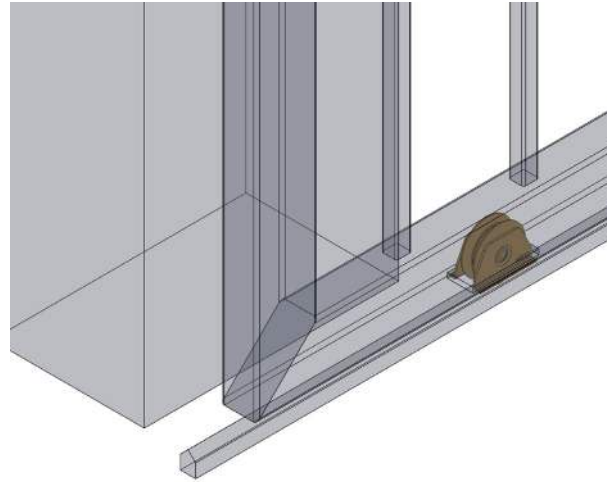
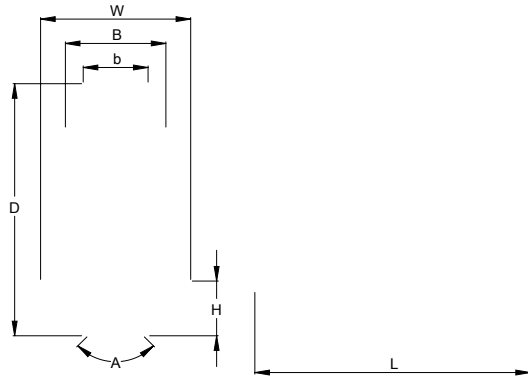
Type	Part No.	H	e1	B	e	d	L	h	b
Flush handle with punching, zinc plated	X5.400	175mm	155mm	75mm	64mm	3,8mm	33mm	145mm	20mm
Flush handle with punching, stainless steel 316/A4	X5.401	175mm	155mm	75mm	64mm	3,8mm	33mm	145mm	20mm

## Gate handle

## Type .500

For sliding gates with stable mounting plate, zinc plated. Mounting holes are identical to the flush handle type X5.400 / 401 and can thus be screwed up.





## Steel bottom roller

## Type X2.S61-S101

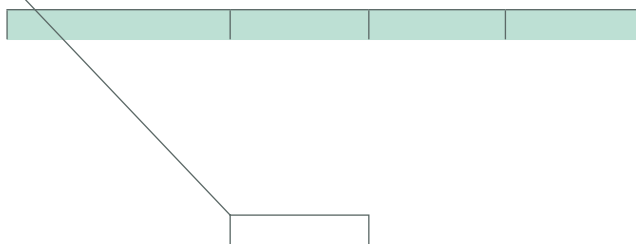
Steel roller with brackets for square guide rail (single bearing).

NIKO Part No.	X2.S61	X2.S81	X2.S101
Load Kg	130	180	210
Dimension B (mm)	26	29	29
Dimension H (mm)	15	19	21
Dimension D (mm)	58	78	98
Dimension L (mm)	60	85	100
Dimension b (mm)	17	20	20
Dimension e (mm)	11	13	13
Dimension W (mm)	37	44	45

## Steel bottom roller

## Type X2.V60-V100

Steel roller with axle for angle guide rail (single bearing).





## Steel bottom roller

## Type X2.060-080



Steel roller with axle for round guide rail (single bearing).

NIKO Part No.	X2.060	X2.080
Load Kg	130	180
Dimension B (mm)	17	20
Dimension D (mm)	58	78
Dimension M	M10	M12
Dimension R (mm)	6,5	8
Dimension b (mm)	17	20

## Steel bottom roller

## Type X2.S60-S80

Steel roller with axle for square guide rail (single bearing).

NIKO Part No.	X2.S60	X2.S80
Load Kg	130	180
Dimension B (mm)	22	24
Dimension D (mm)	58	78
Dimension M	M10	M12
Dimension b (mm)		



## Steel bottom roller

## Type X1.S42-S45

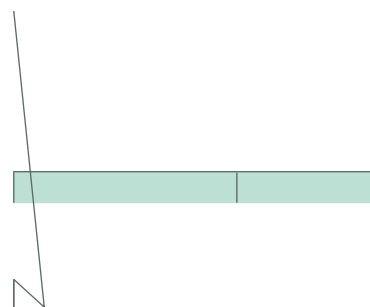
Steel bottom roller with axle for square guide rail plate (single bearing).

NIKO Part No.	X1.S42	X1.S43	X1.S44	X1.S45
Load Kg	200	270	400	500
Dimension B (mm)	35	35	35	35
Dimension D (mm)	100	120	140	160
Dimension R (mm)	40	50	60	70
Dimension L (mm)	60	60	60	60
Dimension d (mm)	15	15	20	20
Dimension e (mm)	14	14	14	14

## Roller for wire rope

## Type X2.D60

Heavy duty steel roller for wire rope 4-6mm (single bearing).



Steel bottom roller

Type X1.V59-V61



Steel bottom roller with brackets for angle guide rail (double bearing).

Accessories for  
Gates and Doors

NIKO Part No.	X1.V59	X1.V61
Load Kg	160	250
Dimension B (mm)	28	40
Dimension D (mm)	48	60
Dimension H (mm)	34	52.5
Dimension b (mm)	20	28
Dimension W (mm)	38	50

Steel bottom roller

Type X1.S60-S61

Steel bottom roller with brackets for square guide rail (double bearing).

NIKO Part No.	X1.S60	X1.S61
Load Kg	160	250
Dimension B (mm)	28	28

## Steel bottom roller

## Type X1.V79-V83

Steel bottom roller with axle for angle guide rail (double bearing).

NIKO Part No.	X1.V79	X1.V81	X1.V82	X1.V83
Load Kg	160	250	375	500
Dimension B (mm)	32	39	-	-
Dimension D (mm)	48	60	80	100
Dimension L (mm)	50	59	53	59
Dimension A	92°	92°	92°	92°
Dimension b (mm)	21	24	33	40
Dimension d (mm)	33	44	61	81
Dimension d1	M10	M12	Ø15	Ø20

## Steel bottom roller

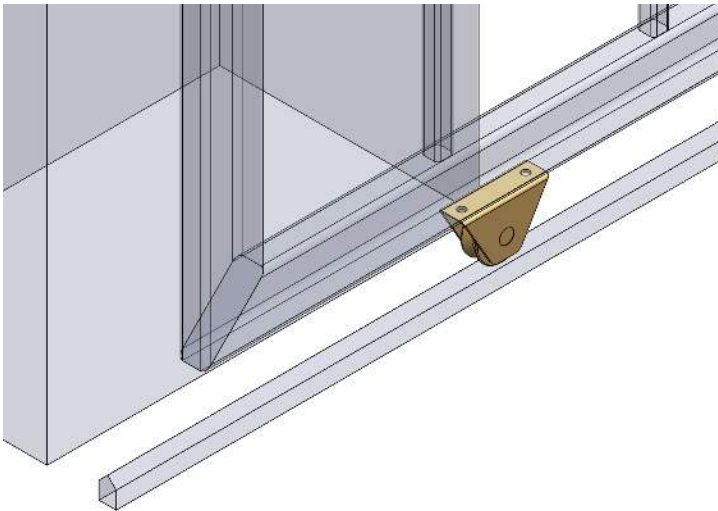
## Type X1.S80-S86

Steel bottom roller with axle for square guide rail (double bearing).

## Steel bottom roller

Type X1.V51

Steel bottom roller with base for angle guide rail (double bearing).



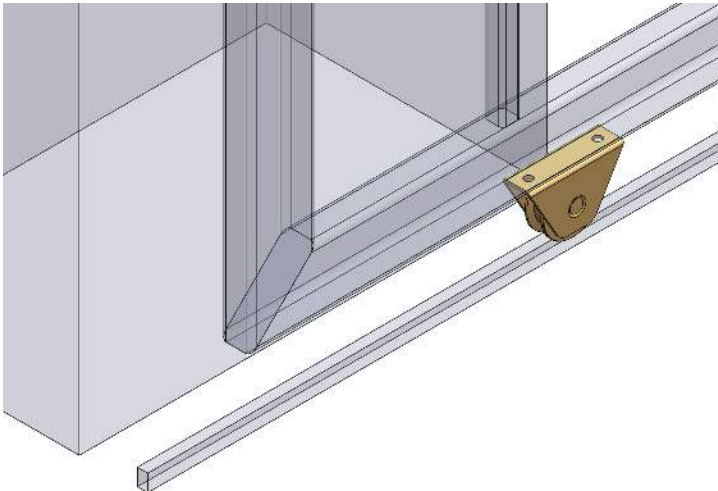
NIKO Part No.	X1.V51
Load Kg	250
Dimension B (mm)	100
Dimension H (mm)	59
Dimension b (mm)	28
Dimension h (mm)	22

Accessories for  
Gates and Doors

## Steel bottom roller

Type X1.S51

Steel bottom roller with base for square guide rail (double bearing).



NIKO Part No.	X1.S51
Load Kg	250
Dimension B (mm)	100
Dimension H (mm)	59
Dimension b (mm)	28
Dimension h (mm)	22



Accessories for Gates and Doors  
We reserve the right for technical amendments without obligation.  
The product pictures and drawings depicted in this catalogue do  
not always reflect all available sizes.

Steel bottom roller

Type X1.V71-V73

Steel bottom roller with side plates for angle guide rail (double bearing).

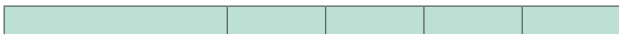
Accessories for  
Gates and Doors

NIKO Part No.	X1.V71	X1.V72	X1.V73
Load Kg	250	375	500
Dimension b (mm)	32	41	50
Dimension H (mm)	100	100	120
Dimension B (mm)	180	180	210
Dimension b1 (mm)	24	33	40
Dimension e (mm)	18	25	35
Dimension s (mm)	4	4	5

Steel bottom roller

Type X1.S71-S74

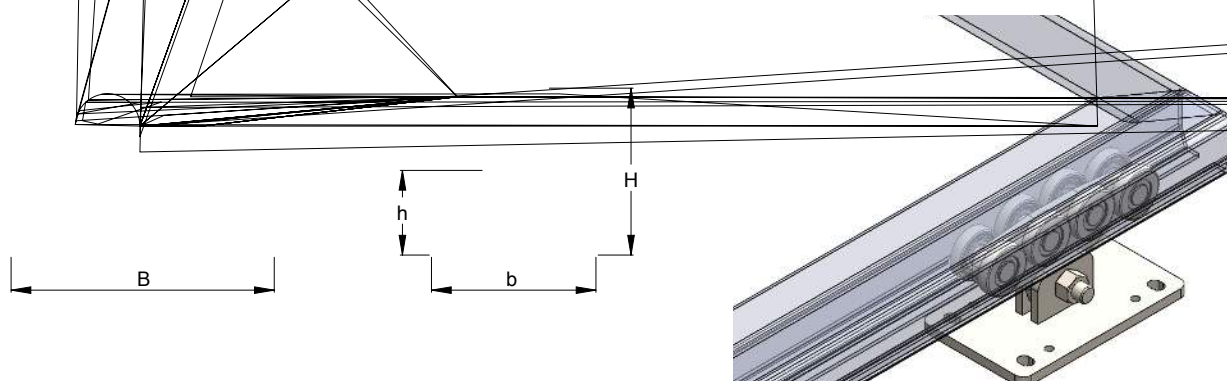
Steel bottom roller with side plates for square guide rail (double bearing).



## Trolley for cantilever gates, with 8 wheels

Type .X002

Minimal tilting effect through precise wheel guidance. High load capacity for professional applications for intensive operation. Stainless steel 304/A2.



NIKO Profile No.	25.050
Part No. [304/A2]	55.X002
Dimension B (mm)	170
Dimension H (mm)	144
Dimension b (mm)	110
Dimension h (mm)	84

Accessories for  
Gates and Doors

## Base plate for height adjustment of trolley for cantilever gates

Type .X093

Stainless steel 304/A2, including 4 adjustment screws.

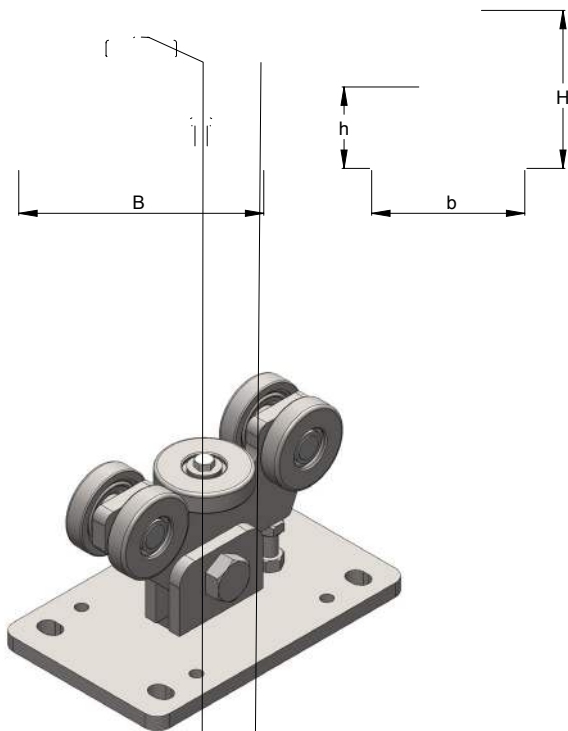




## Trolley for cantilever gates, with 4 wheels & horizontal wheel

Type .X012

Adjustable tilting effect by adjustable support plate. Optimal loading capacity for residential use.  
Stainless steel 304/A2.



NIKO Profile No.	25.050
Part No.	55.X012
Dimension B (mm)	170
Dimension H (mm)	122
Dimension b (mm)	110
Dimension h (mm)	62

Accessories for  
Gates and Doors

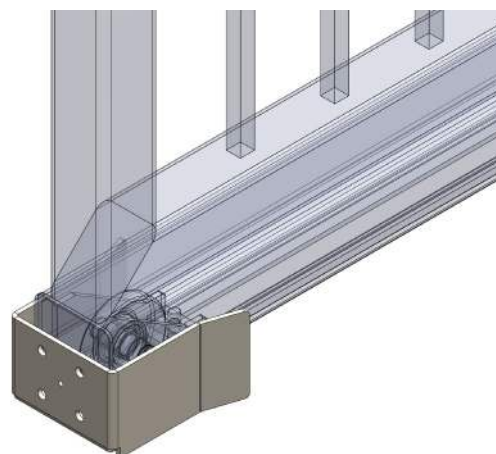
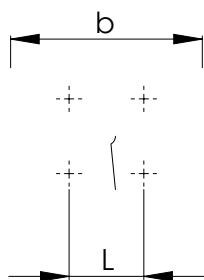


**Accessories for Gates and Doors**  
We reserve the right for technical amendments without obligation.  
The product pictures and drawings depicted in this catalogue do not always reflect all available sizes.

## Resting base

Type .X081

For cantilever gates including buffer stop. Stainless steel 304/A2.



NIKO Profile No.	25.050
Part No.	55.X081
Dimension B (mm)	112
Dimension H (mm)	72
Dimension L (mm)	40
Dimension b (mm)	81

## Guide roller for cantilever gates with plate

Type .X091

Guide roller with end cap for coating. Stainless steel 304/A2.

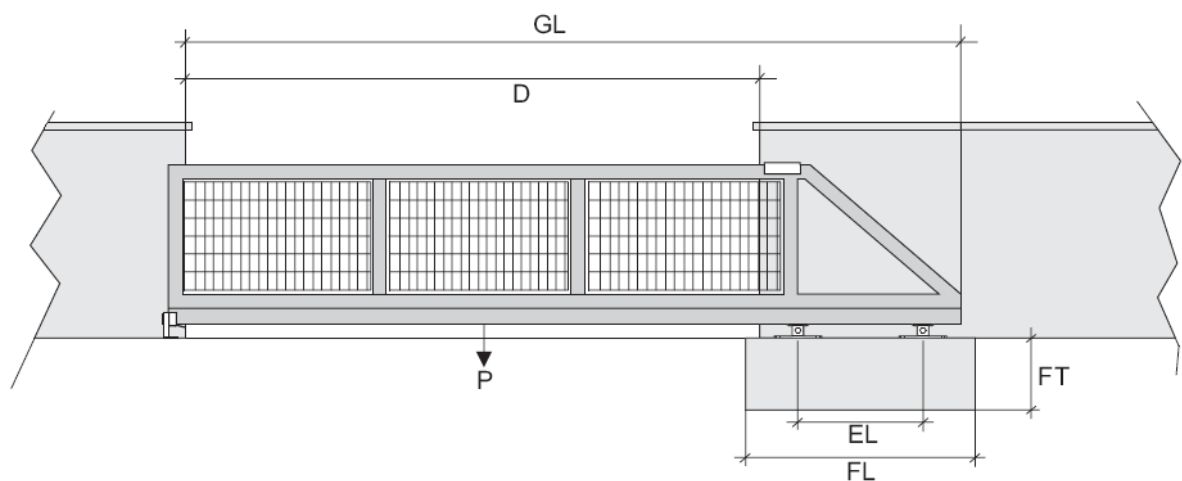


## Guide with nylon or brass roller with screw

Type .N49/.M49

For concealed guidance with screw connection in stainless steel 304/A2.





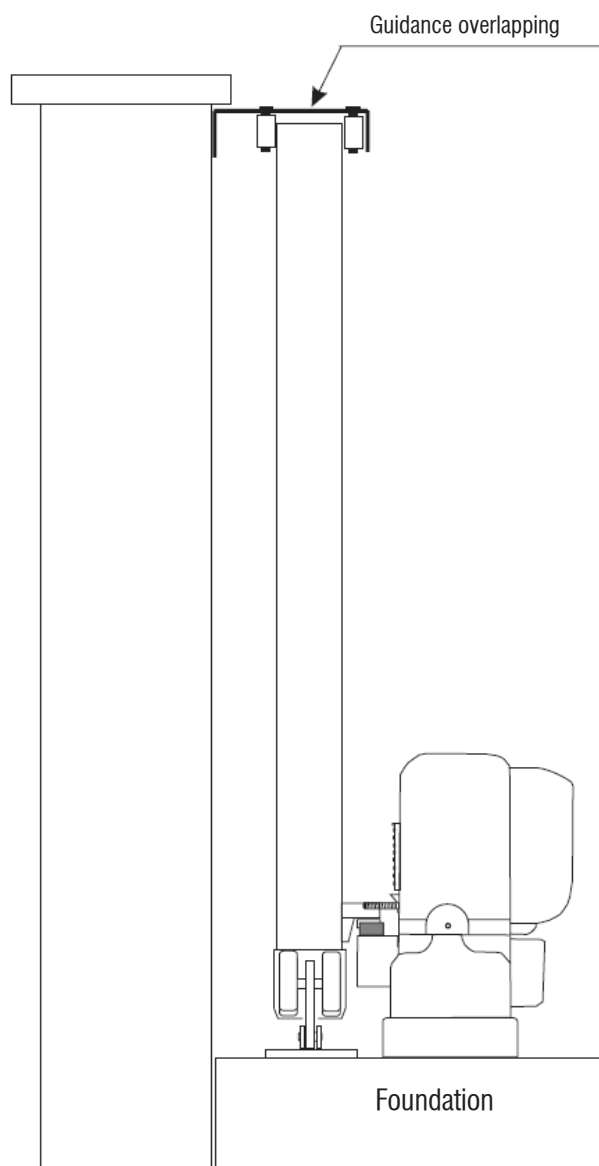
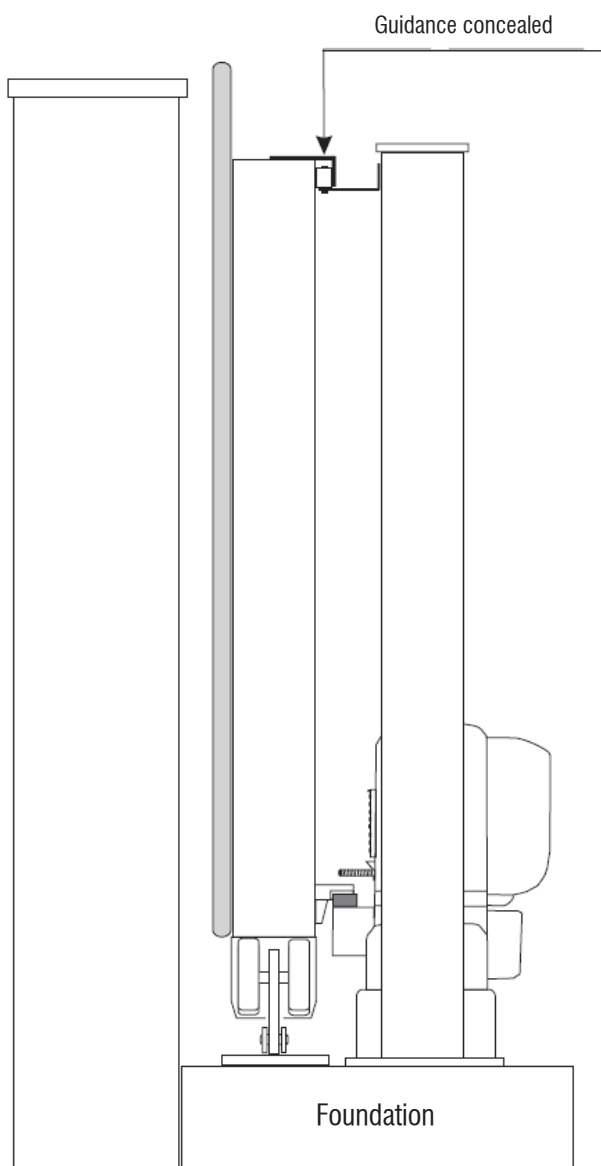
Profile	25.000				26.000				27.000					
Clearance D	2500	3000	3500	4000	4500	5000	5500	6000	6500	7000	7500	8000	8500	9000
max. Gate														
maxmax. Gate														



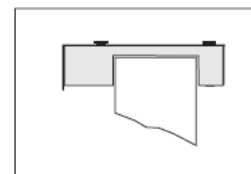
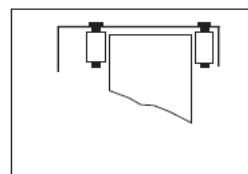
For inside guidance  
on column for gates with  
facing

For outside  
guidance on wall for gates  
with filling

Accessories for  
Gates and Doors



If the gate system is automated, a protective guard for the running rollers at the top guidance must be provided on site after the gate mounting/adjustment (see below).



## Index

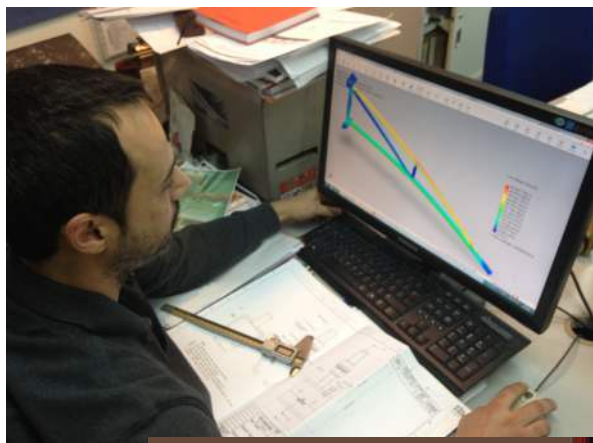
## Accessories for Gates and Doors

[illegible]

20en-G77587 Tm74 415.33026 Tm(20)TjET11.1BDC BT12 0 0 12 265.7834 50



Our quality control department is manned with experienced and highly skilled engineers. Our test lab is equipped with endurance test stands, tensile stress equipment, hardness test machines and other laboratory equipment. Virtual stress analysis is also performed during the developing phase of every component.



Accessories for  
Gates and Doors



[www.niko.eu.co](http://www.niko.eu.co)



Complete product range NIKO:

- Light duty sliding door hardware
- Heavy duty sliding door hardware
- Conveyor systems
- Light cranes
- Cable trolleys, festoon systems & conductor bars
- Personal fall arrest systems (EN 795)
- Accessories for gates and doors